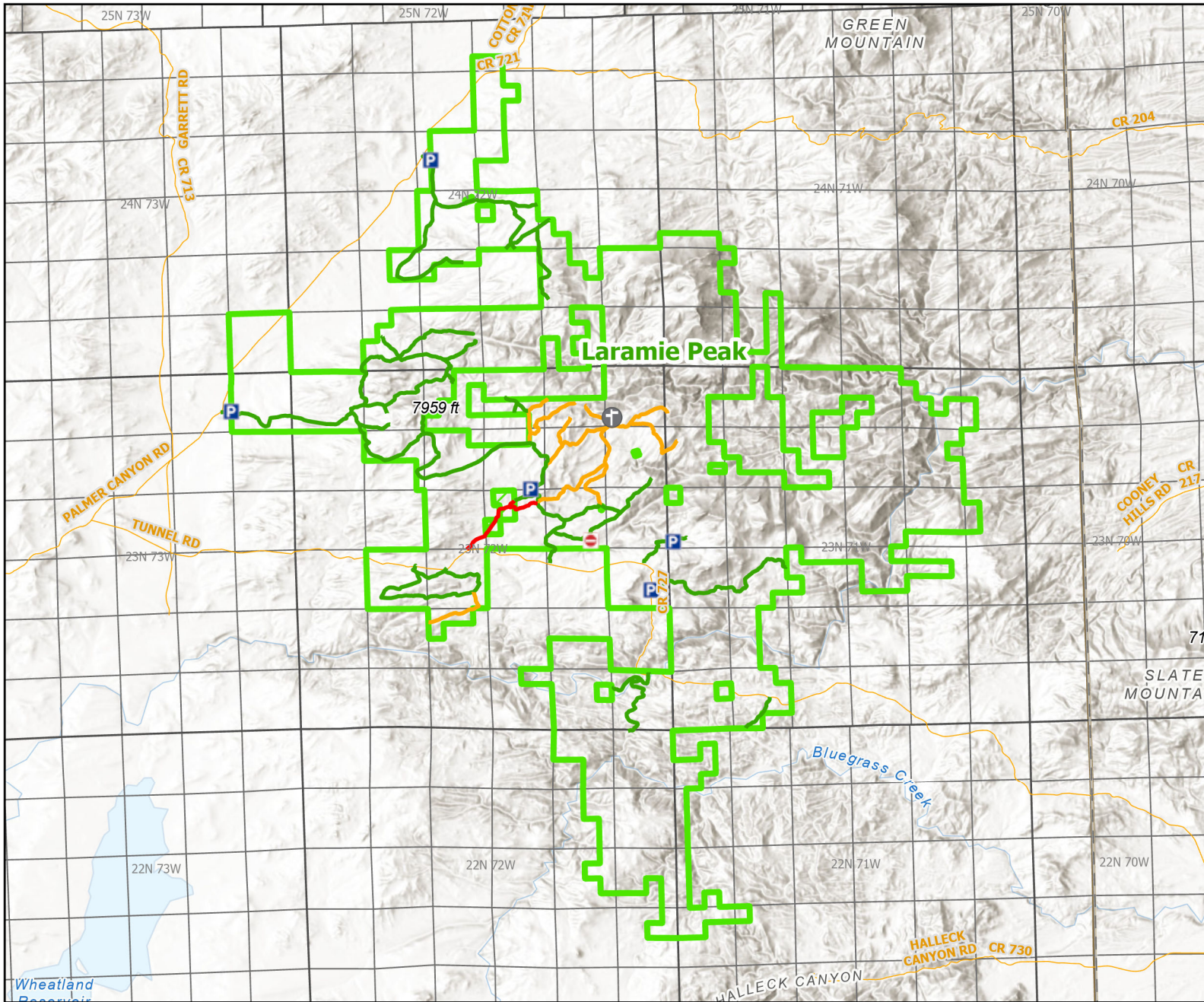




Laramie Peak Wildlife Habitat Management Area



Recreation Options: Fishing, Hunting, Trapping, Camping, Hiking, Wildlife Viewing

Access Dates: 5/1 - 2/1 THIS AREA OPENS TO ALL HUMAN PRESENCE AT 8:00 AM MAY 1st.

Seasonal Closure: Closed to all Human Presence Feb. 1 - April 30.

Access Exceptions: Hay Canyon, Tony Ridge, and Duck Creek Canyon (WGFC Lands) areas closed Feb. 1 - April 30. Remaining areas are open year-round

Area Regulations: Access Road and Parking areas not plowed during winter, Public Access limited to easement areas marked with department signs. Camping limit is 5 days, Off road travel restricted to 25 feet from road.

Shed Limitations:

Pheasant Release Dates:

This map is for visual use, assistance and general location only, does not represent a survey, and is not to be used for legal conveyance. Hunt Area boundaries are approximate, consult Game and Fish Hunting Regulations for descriptions and restrictions. Access to these private lands for any commercial activity must be gained by contacting the individual landowner(s) directly.