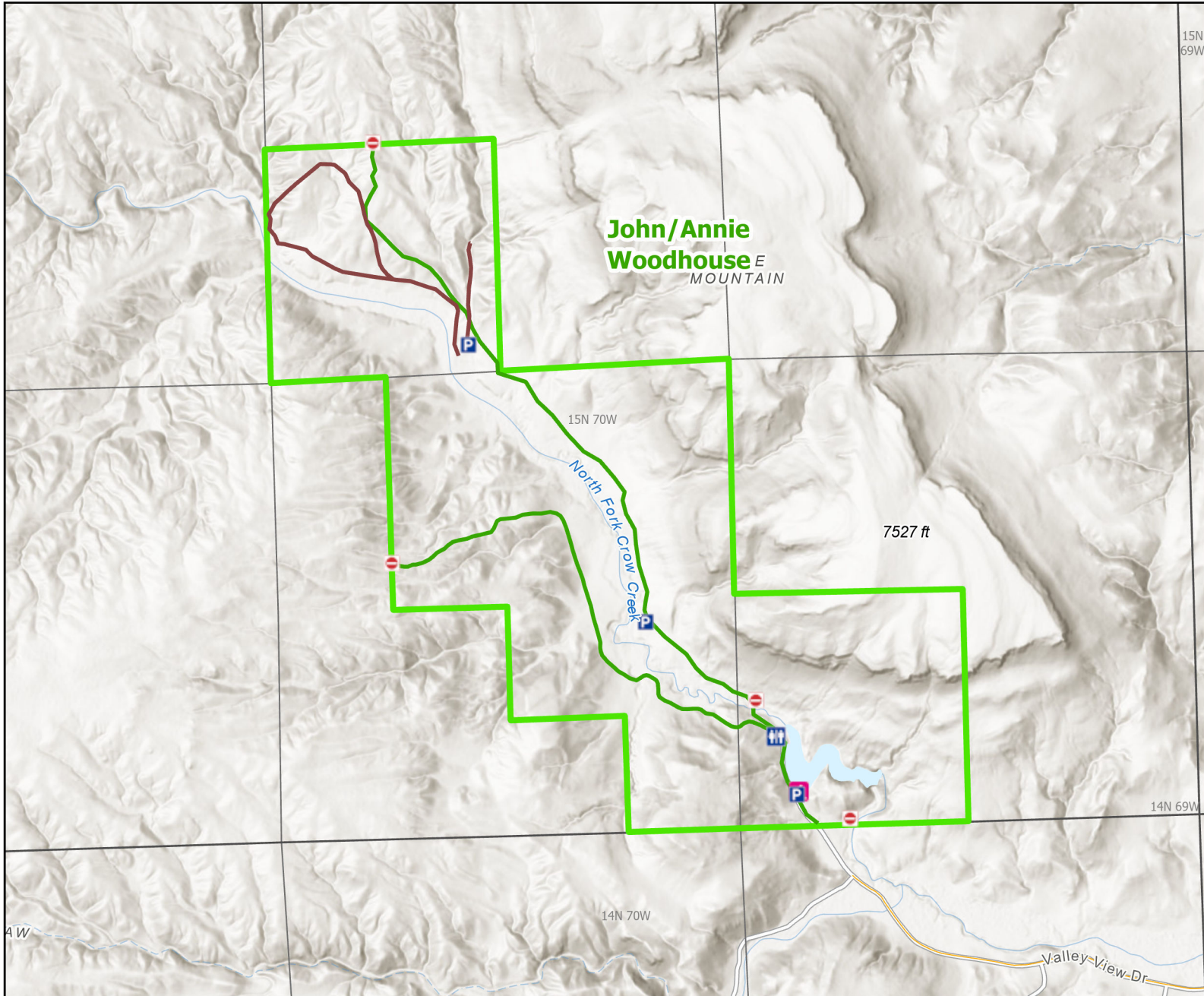




John/Annie Woodhouse Wildlife Habitat Management Area



Recreation Options: Fishing, Hiking, Wildlife Viewing, Archery Hunting
Access Dates: Open year round
Seasonal Closure:
Access Exceptions: Access road and parking not plowed during winter.
Area Regulations: Limited to easement area marked with signs. Archery Hunting only. No Shooting, No Trapping. No Overnight Camping, No Off-Road Travel, No Open Fires, No Fireworks, No Off-Road travel. Use of internal combustion engines is prohibited.
Shed Limitations:
Pheasant Release Dates:

This map is for visual use, assistance and general location only, does not represent a survey, and is not to be used for legal conveyance. Hunt Area boundaries are approximate, consult Game and Fish Hunting Regulations for descriptions and restrictions. Access to these private lands for any commercial activity must be gained by contacting the individual landowner(s) directly.