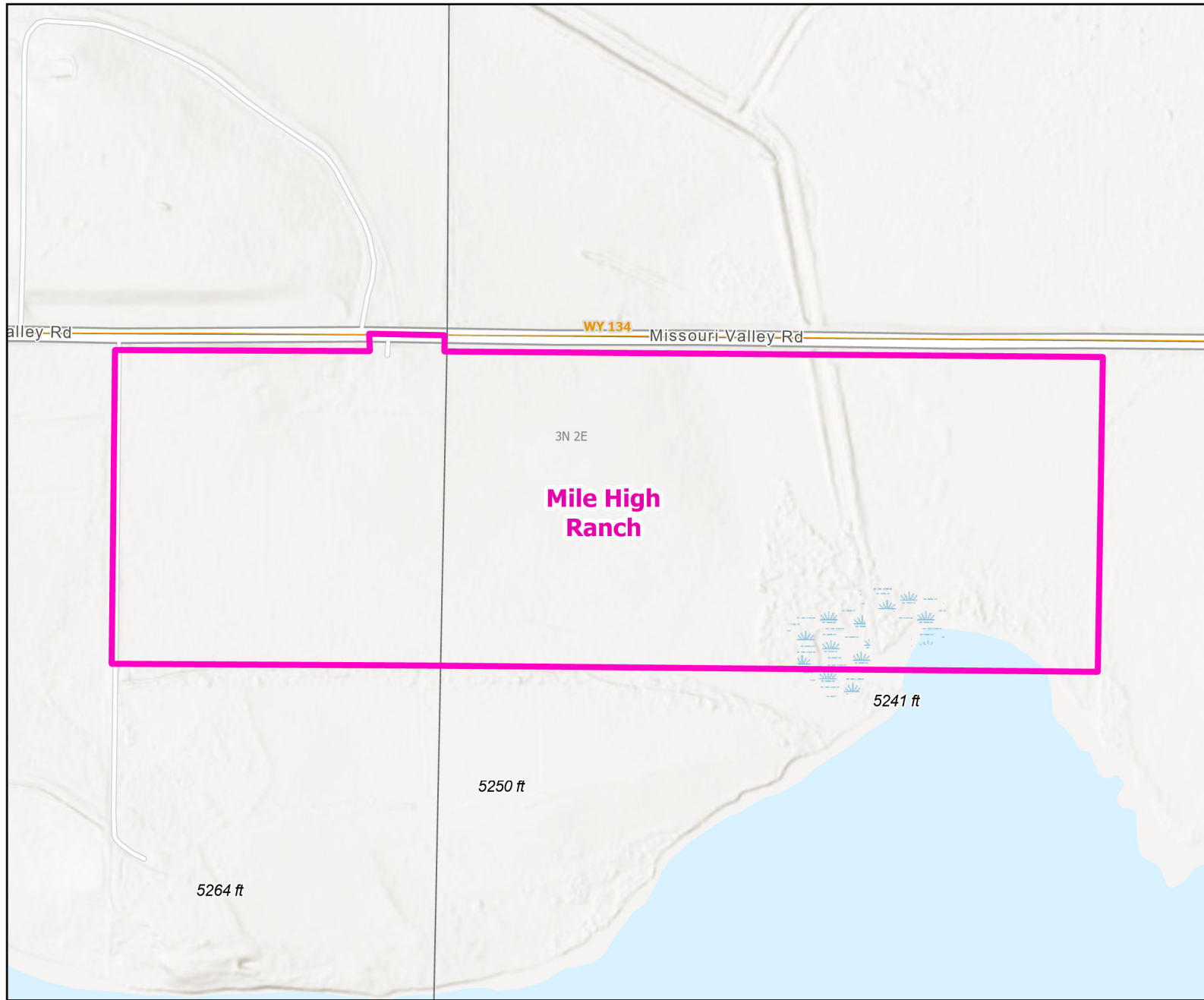




Mile High Ranch Public Access Area



Recreation Options: Fishing, Hunting, Wildlife Viewing
 Access Dates: Open year round
 Seasonal Closure:
 Access Exceptions:
 Area Regulations: The waters and lands within one-half mile of the aeration system on the north side of Ocean Lake shall be closed to migratory game bird hunting beginning November 15 through March 10.
 Shed Limitations:
 Pheasant Release Dates:

This map is for visual use, assistance and general location only, does not represent a survey, and is not to be used for legal conveyance. Hunt Area boundaries are approximate, consult Game and Fish Hunting Regulations for descriptions and restrictions. Access to these private lands for any commercial activity must be gained by contacting the individual landowner(s) directly.