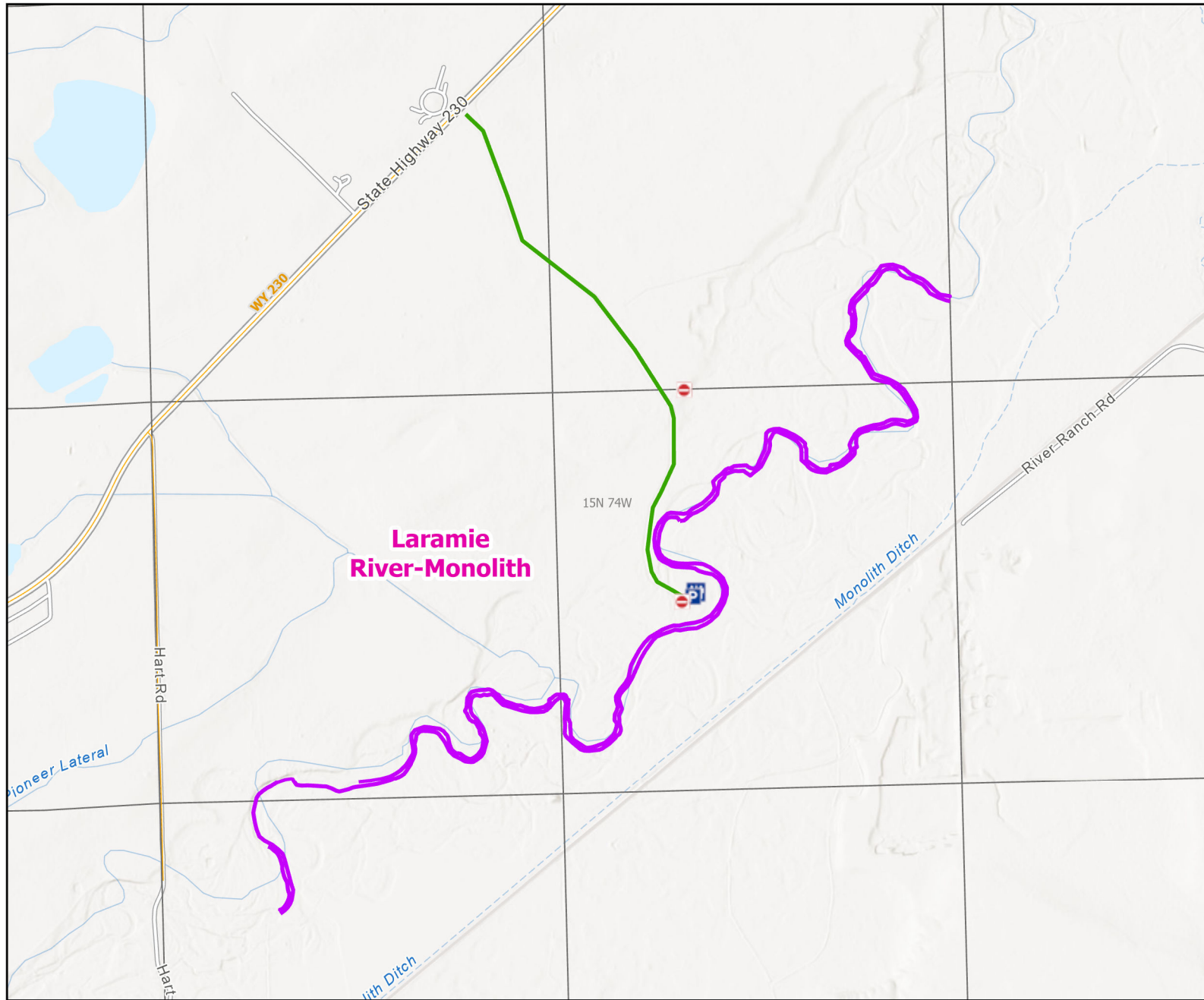




# Laramie River-Monolith Public Access Area




Recreation Options: Fishing, Floating, Wildlife Viewing.  
 Access Dates: Open year round  
 Seasonal Closure:  
 Access Exceptions:  
 Area Regulations: Limited to easement area marked with signs No hunting or discharge of firearms, Access road and parking not plowed during winter. No open fires or Fireworks.  
 Shed Limitations: No Collection of shed antlers or horns January 1-May 1 at 6:00 AM  
 Pheasant Release Dates:

This map is for visual use, assistance and general location only, does not represent a survey, and is not to be used for legal conveyance. Hunt Area boundaries are approximate, consult Game and Fish Hunting Regulations for descriptions and restrictions. Access to these private lands for any commercial activity must be gained by contacting the individual landowner(s) directly.