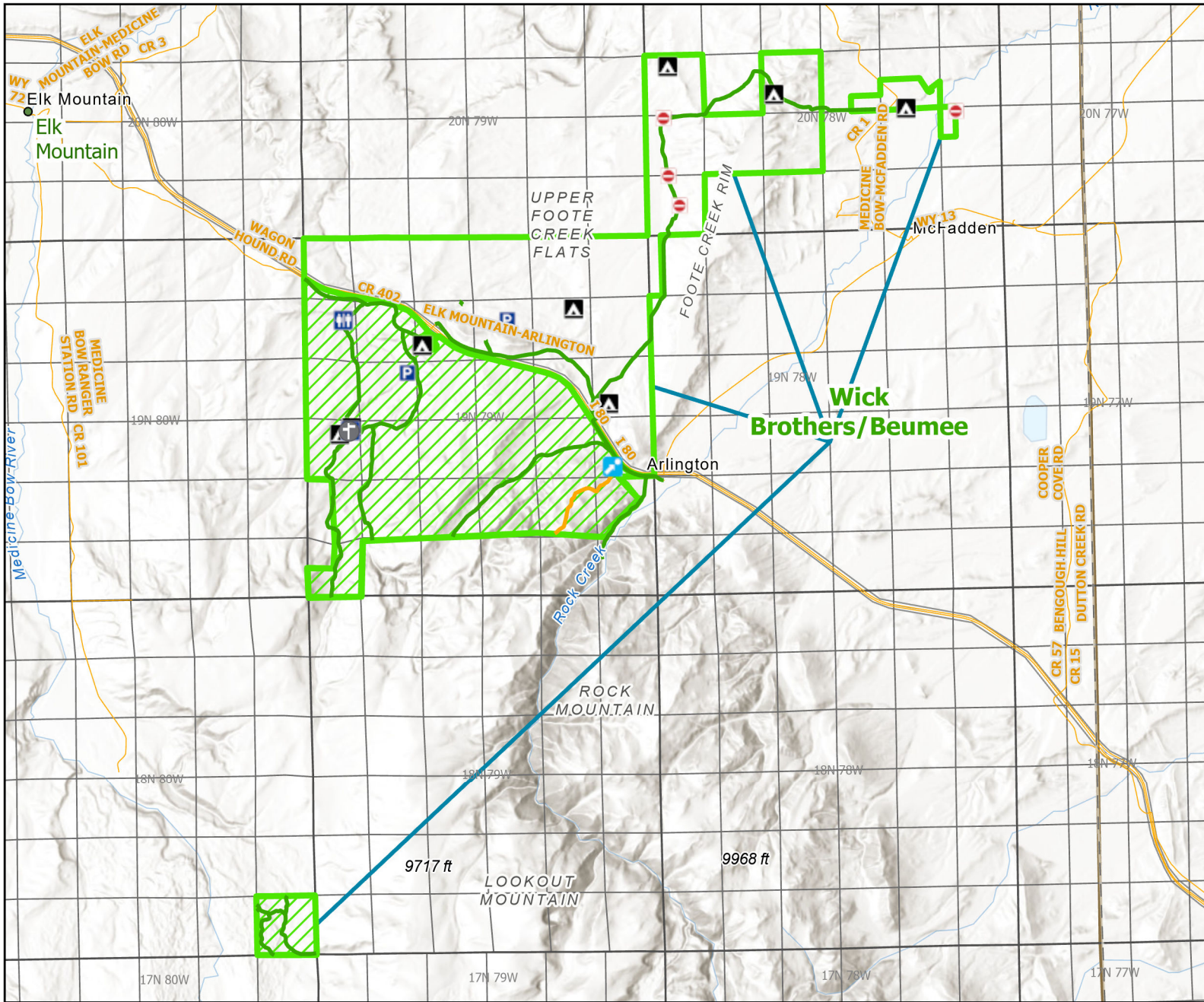




# Wick Brothers/Beumee Wildlife Habitat Management Area




Recreation Options: Fishing, Hunting, Trapping, Camping, Hiking, Wildlife Viewing, Educational Kiosk.

Access Dates: May 16 @ 8 AM trough Nov 30. LANDS SOUTH OF I-80: opened to human presence May 16 @ 8 AM trough Nov 30. LANDS NORTH OF I-80: Open year-round

Seasonal Closure: Human Presence Closure Dec 1- May 15

Access Exceptions: LANDS SOUTH OF I-80: Closed to Human Presence from Dec 1 - May 15  
LANDS NORTH OF I-80: Open all year & No collection of shed antlers or horns Jan 1 - May 1 @ 6 AM.

Area Regulations: Limited to WGFC lands or easements marked with department signs. Roads/Parking not plowed during winter. 14 day camping limit.

Shed Limitations:

Pheasant Release Dates:

This map is for visual use, assistance and general location only, does not represent a survey, and is not to be used for legal conveyance. Hunt Area boundaries are approximate, consult Game and Fish Hunting Regulations for descriptions and restrictions. Access to these private lands for any commercial activity must be gained by contacting the individual landowner(s) directly.