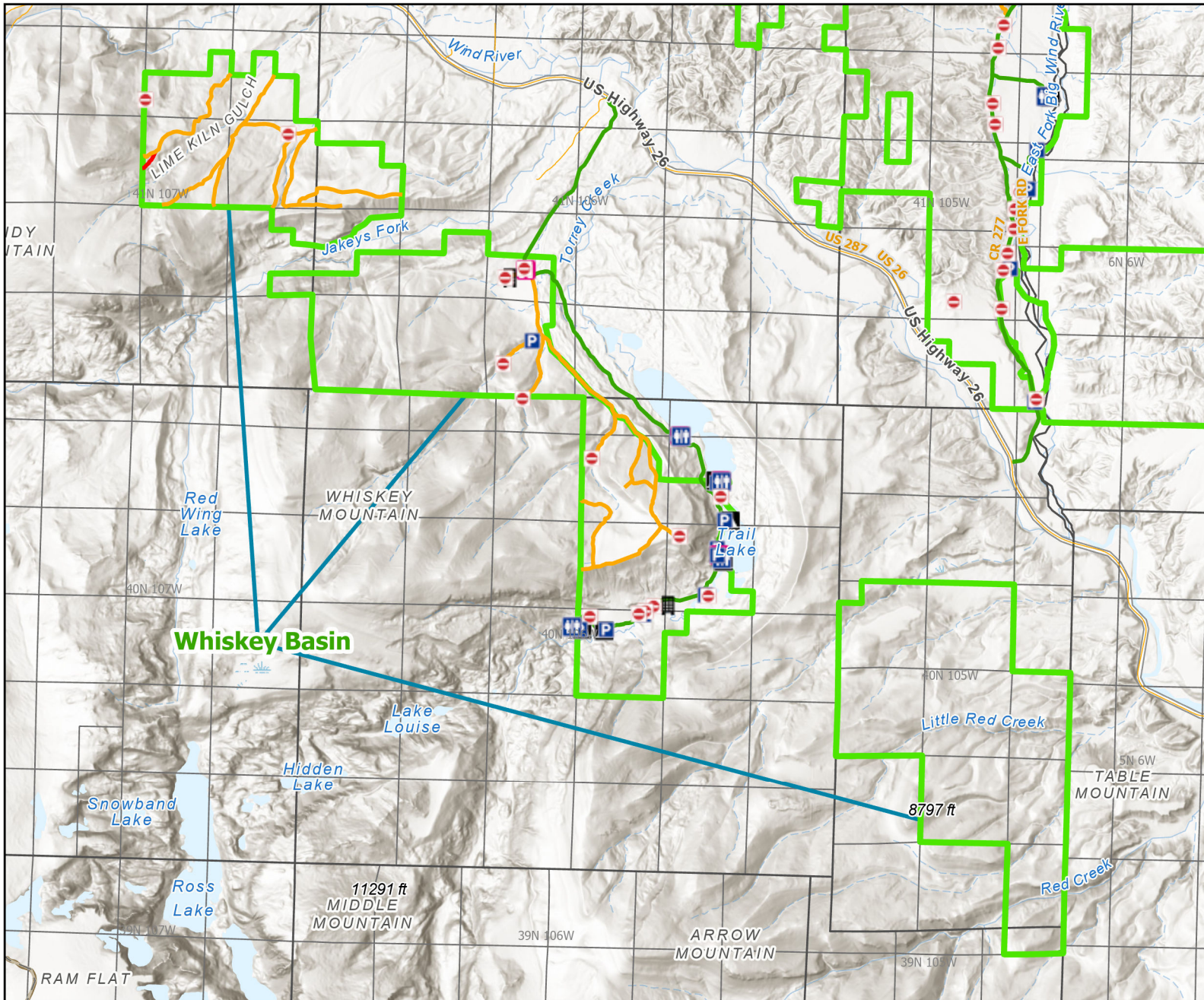




Whiskey Basin Wildlife Habitat Management Area



Recreation Options: Fishing, Hunting, Trapping, Camping, Hiking, Wildlife Viewing
 Access Dates: THIS AREA OPENS TO MOTORIZED VEHICLES AT 8:00 AM MAY 16th.
 Seasonal Closure: Whiskey Basin WHMA is closed to motorized vehicles Dec. 1 - May 15
 Access Exceptions: Closure is limited to vehicles only. Foot and horse access open year-round
 Area Regulations: 14 day camping limit
 Weed free certified hay only
 Shed Limitations:
 Pheasant Release Dates:

This map is for visual use, assistance and general location only, does not represent a survey, and is not to be used for legal conveyance. Hunt Area boundaries are approximate, consult Game and Fish Hunting Regulations for descriptions and restrictions. Access to these private lands for any commercial activity must be gained by contacting the individual landowner(s) directly.