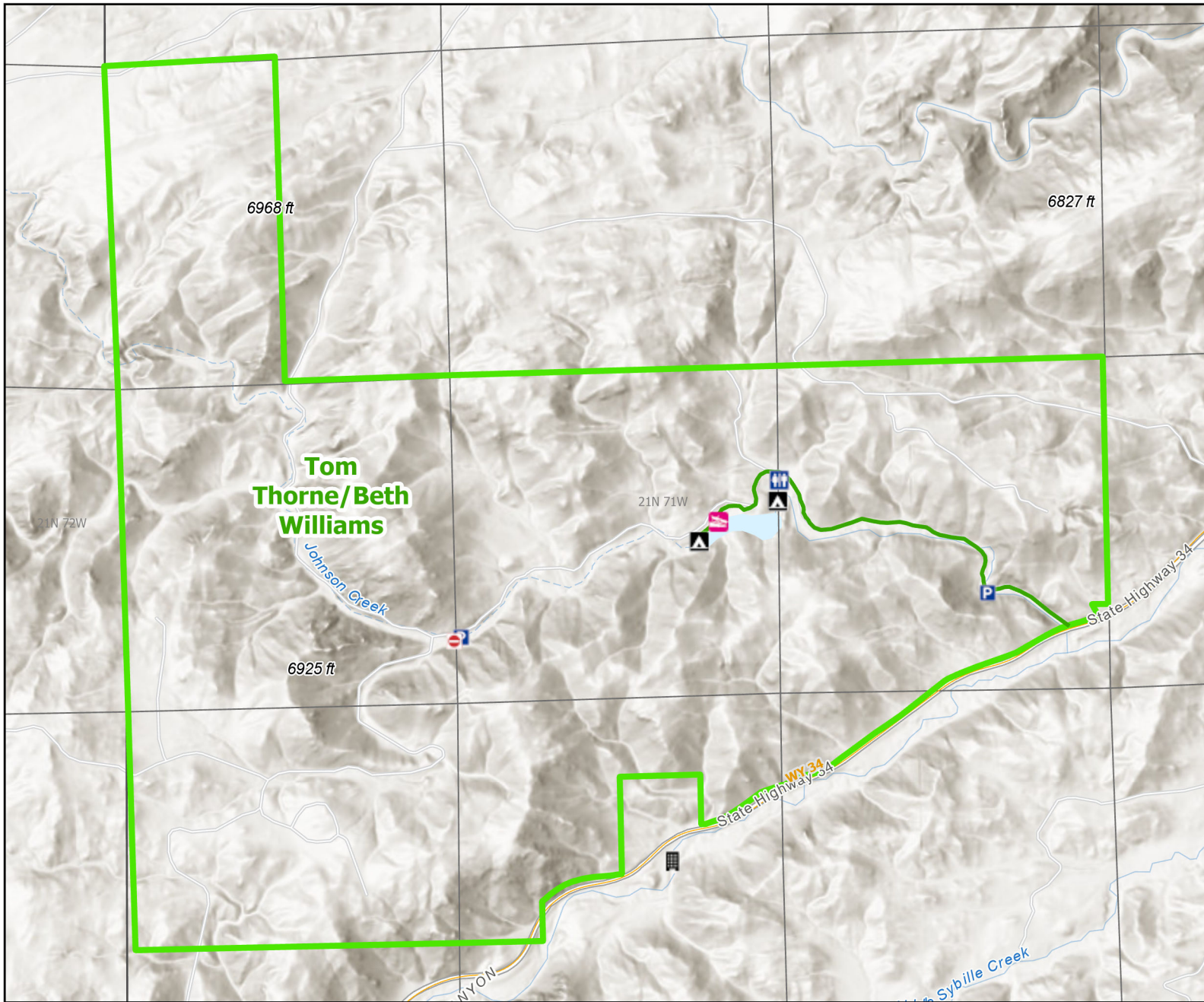




# Tom Thorne/Beth Williams Wildlife Habitat Management Area




Recreation Options: Fishing, Hunting, Trapping, Camping, Hiking, Wildlife Viewing, Floating.

Access Dates: Foot and horse access open year-round THIS AREA OPENS TO MOTORIZED VEHICLES AT 8:00AM JUNE 1st.

Seasonal Closure: Vehicular Closure Feb 1 - May 31

Access Exceptions: Closure is limited to vehicles only. Foot and horse access open year-round

Area Regulations: Use of internal combustion engines is prohibited. Camping Limit is 14 days, Access road and parking not plowed during winter, Access limited to WGFC land or easement marked with department signs.

Shed Limitations:

Pheasant Release Dates:

This map is for visual use, assistance and general location only, does not represent a survey, and is not to be used for legal conveyance. Hunt Area boundaries are approximate, consult Game and Fish Hunting Regulations for descriptions and restrictions. Access to these private lands for any commercial activity must be gained by contacting the individual landowner(s) directly.