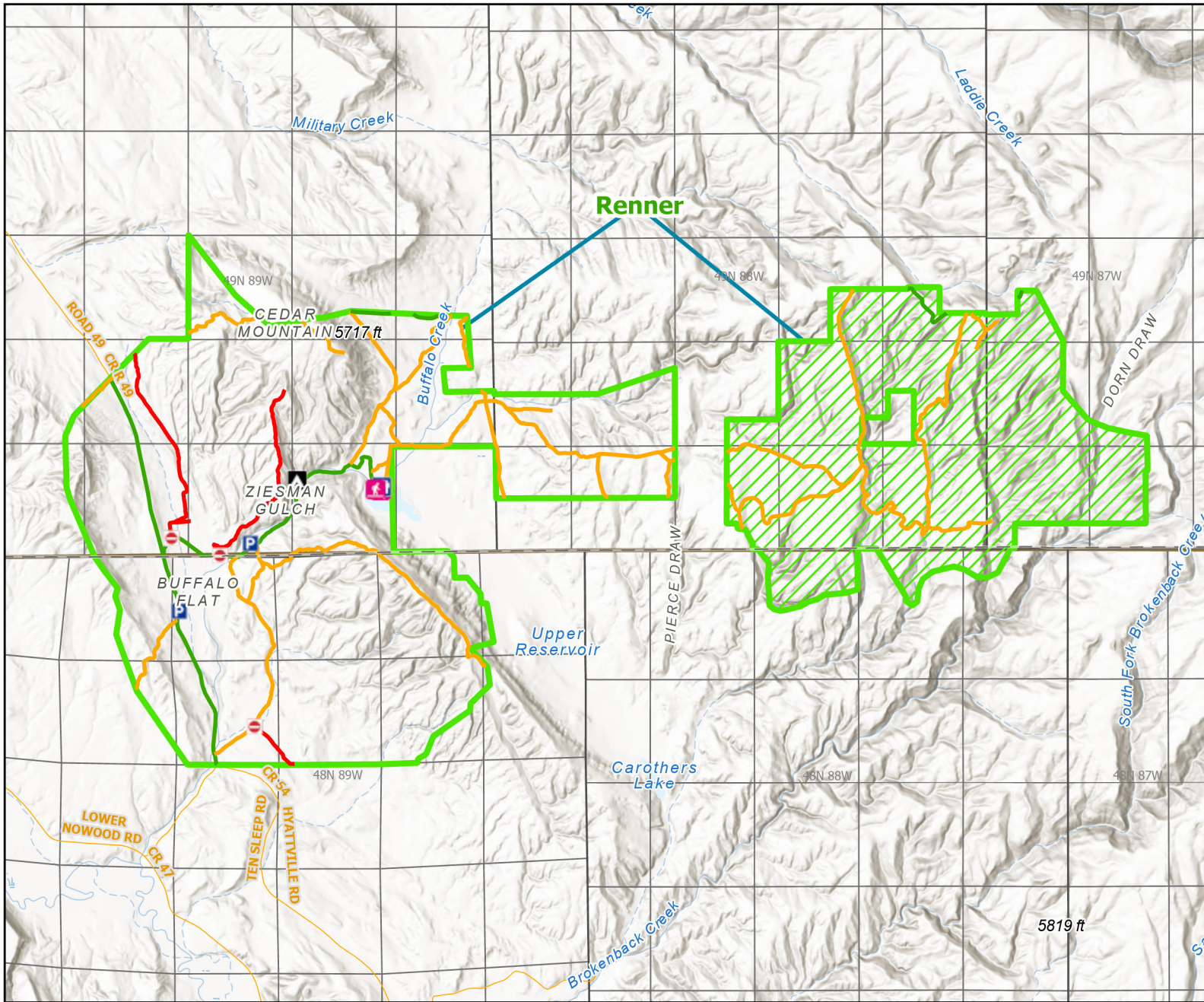




# Renner Wildlife Habitat Management Area




Recreation Options: Fishing, Hunting, Trapping, Camping, Hiking  
 Access Dates: Lower portion open year around. UPPER PORTION OPENS TO FULL ACCESS AT 8:00AM June 1 - Dec. 31  
 Seasonal Closure: Upper portion closed to Unauthorized Vehicles Jan. 1 - May 31  
 Access Exceptions:  
 Area Regulations: 14-day camping limit.  
 Shed Limitations:  
 Pheasant Release Dates:

This map is for visual use, assistance and general location only, does not represent a survey, and is not to be used for legal conveyance. Hunt Area boundaries are approximate, consult Game and Fish Hunting Regulations for descriptions and restrictions. Access to these private lands for any commercial activity must be gained by contacting the individual landowner(s) directly.