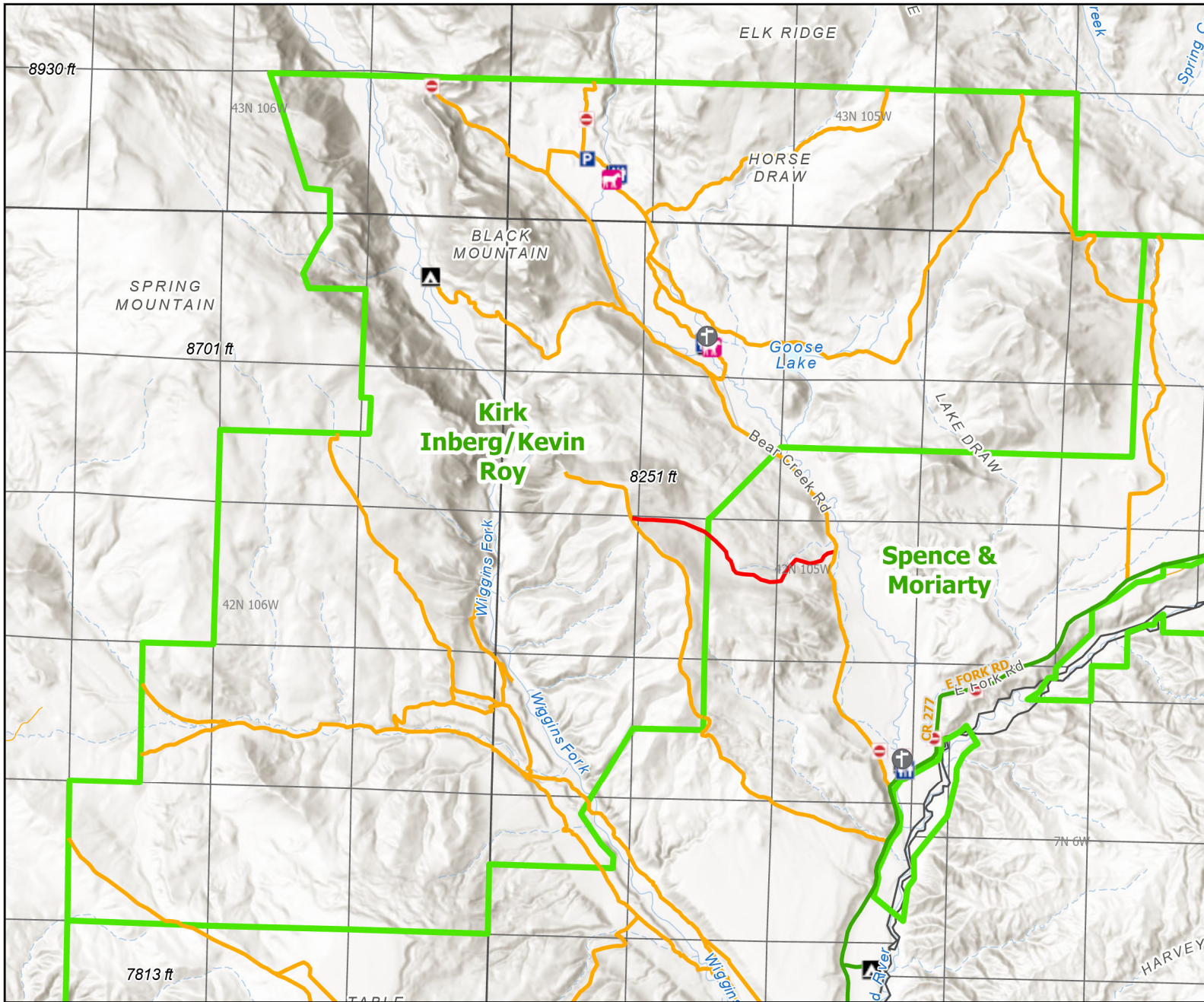




Kirk Inberg/Kevin Roy Wildlife Habitat Management Area



Recreation Options: Fishing, Hunting, Trapping, Camping, Hiking

Access Dates: THIS AREA OPENS TO ALL HUMAN PRESENCE AT 8:00 AM MAY 16th.

Seasonal Closure: Dec. 16 - May 15 Closed to Human Presence to minimize impacts to wintering wildlife.

Access Exceptions:

Area Regulations:

Shed Limitations:

Pheasant Release Dates:

This map is for visual use, assistance and general location only, does not represent a survey, and is not to be used for legal conveyance. Hunt Area boundaries are approximate, consult Game and Fish Hunting Regulations for descriptions and restrictions. Access to these private lands for any commercial activity must be gained by contacting the individual landowner(s) directly.