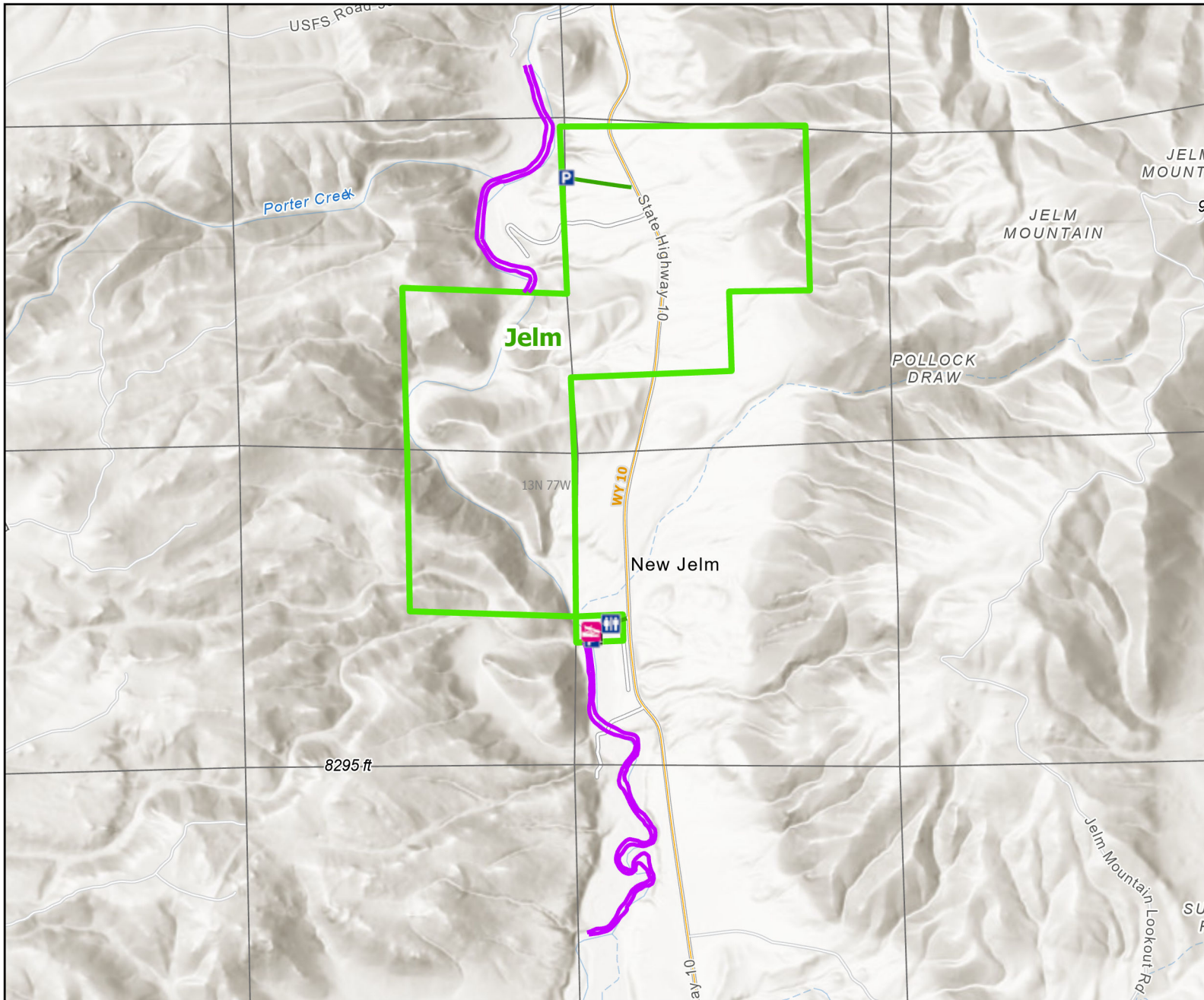




Jelm Wildlife Habitat Management Area



Recreation Options: Fishing, Hunting, Trapping, Camping, Hiking, Wildlife Viewing, Floating.

Access Dates: Open year-round

Seasonal Closure: Limited to easement area marked with signs

Access Exceptions: Note pedestrian access is immediately along bank from south parking area up stream, and 50' above high water at north parking area. No camping at downstream northern parking area.

Area Regulations: Access road and parking not plowed during winter. Camping limit 5 days.

Shed Limitations: No Collection of shed antlers or horns January 1-May 1 at 6:00 AM

Pheasant Release Dates:

This map is for visual use, assistance and general location only, does not represent a survey, and is not to be used for legal conveyance. Hunt Area boundaries are approximate, consult Game and Fish Hunting Regulations for descriptions and restrictions. Access to these private lands for any commercial activity must be gained by contacting the individual landowner(s) directly.