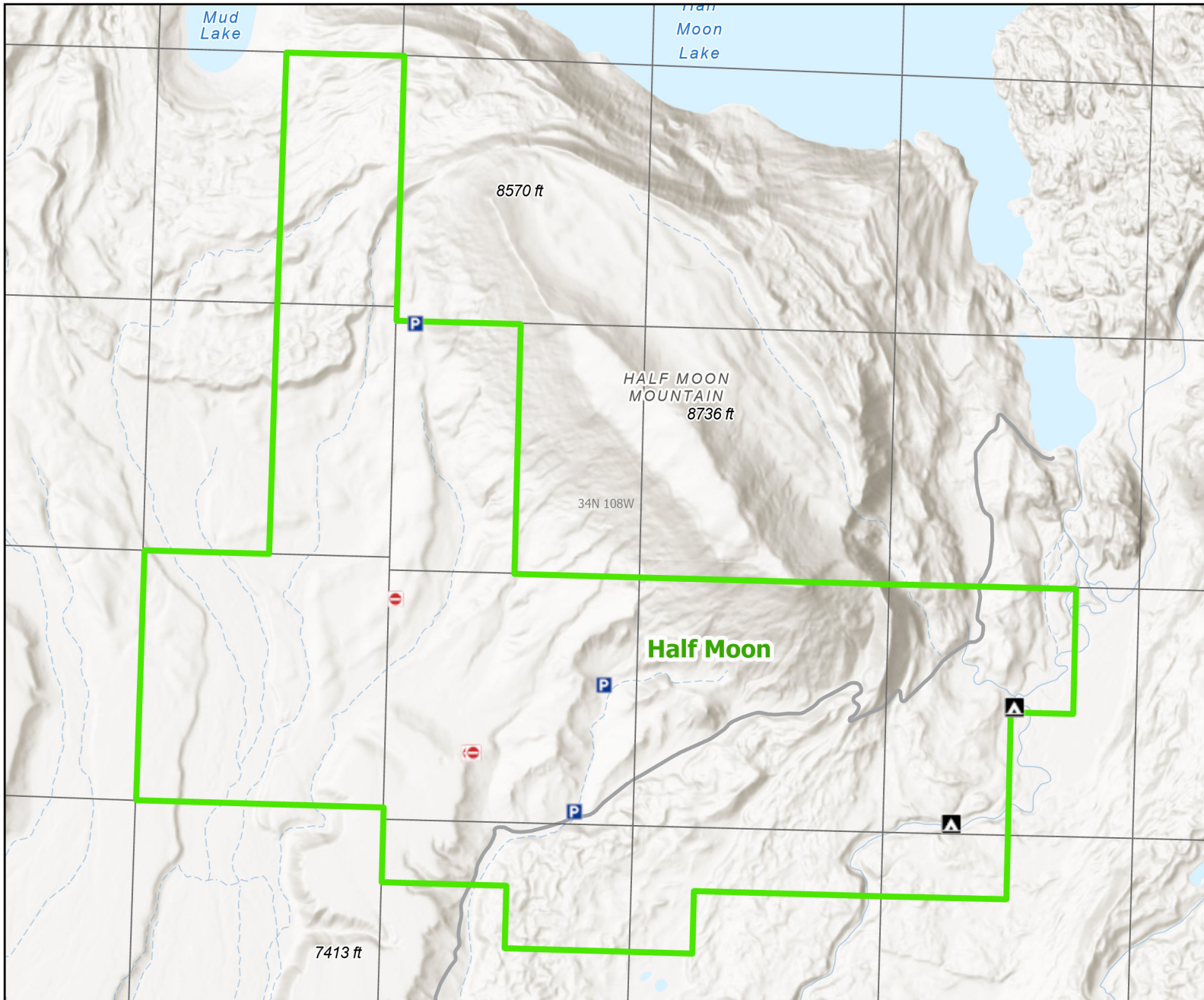




# Half Moon Wildlife Habitat Management Area




**Recreation Options:** Fishing, Hunting, Trapping, Camping, Hiking, Wildlife Viewing

**Access Dates:** May 1 at 6am - Dec. 1

**Seasonal Closure:** Dec. 1- May 1 at 6am

**Access Exceptions:**

**Area Regulations:** No human presence Dec. 1 - May 1 at 6am. 14 day camping limit restricted to designated sites only. Travel restricted to roads marked with white arrows. Certified weed free hay only

**Shed Limitations:** No Collection of shed antlers or horns January 1-May 1 at 6:00 AM

**Pheasant Release Dates:**

This map is for visual use, assistance and general location only, does not represent a survey, and is not to be used for legal conveyance. Hunt Area boundaries are approximate, consult Game and Fish Hunting Regulations for descriptions and restrictions. Access to these private lands for any commercial activity must be gained by contacting the individual landowner(s) directly.