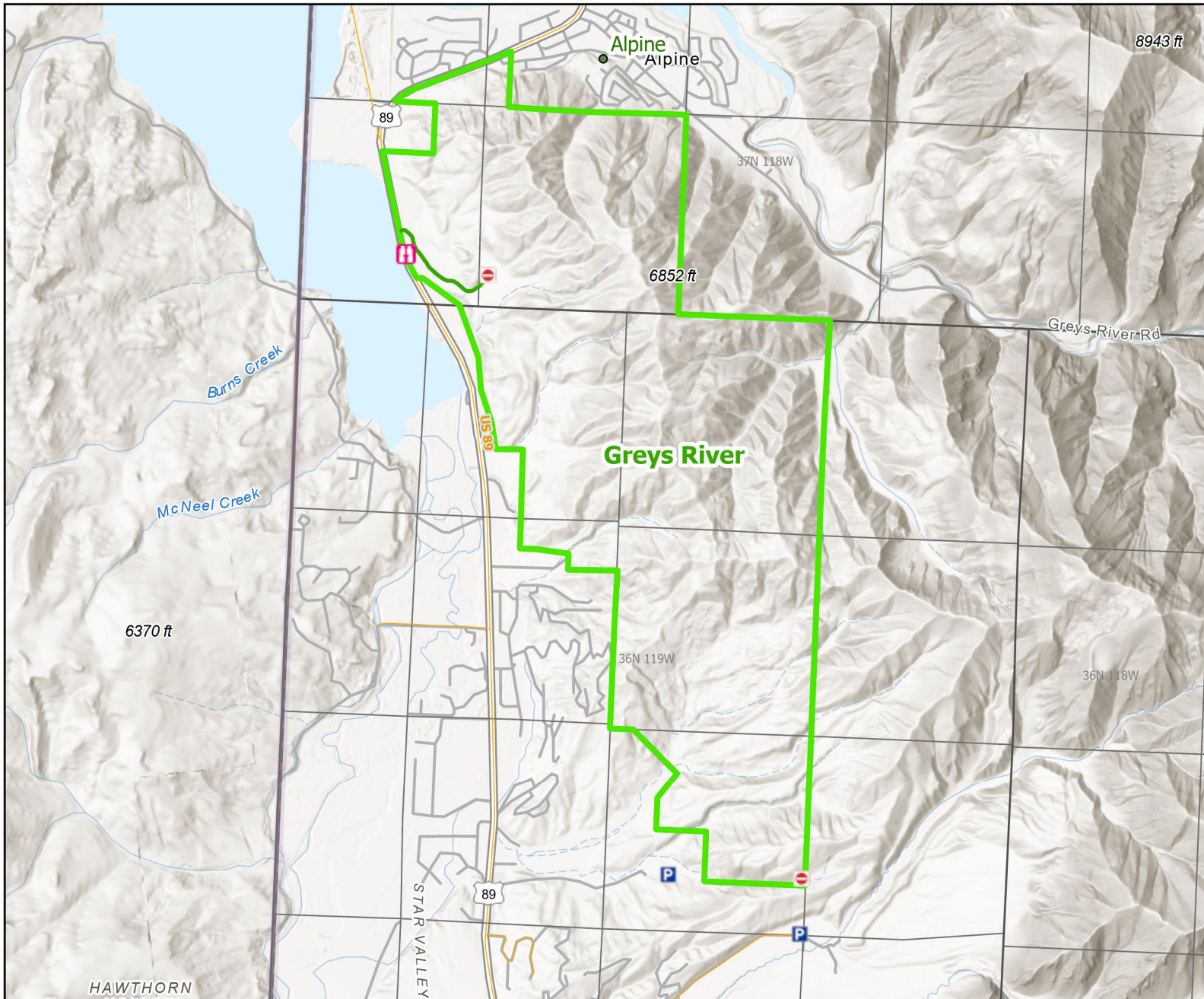




Greys River Wildlife Habitat Management Area



Recreation Options: Hunting, Trapping, Camping, Hiking, Wildlife Viewing

Access Dates: May 1 at 6am - Dec 1

Seasonal Closure: Dec. 1 - May 1 at 6am

Access Exceptions:

Area Regulations: No human presence from Dec 1 - May 1 at 6am. Please close gates due to feedground livestock grazing. No fireworks. 14 day camping limit. Motor vehicles are restricted to roads marked with a white arrow. Certified weed free hay. Firewood cutting is prohibited

Shed Limitations: No Collection of shed antlers or horns January 1-May 1 at 6:00 AM

Pheasant Release Dates:

This map is for visual use, assistance and general location only, does not represent a survey, and is not to be used for legal conveyance. Hunt Area boundaries are approximate, consult Game and Fish Hunting Regulations for descriptions and restrictions. Access to these private lands for any commercial activity must be gained by contacting the individual landowner(s) directly.