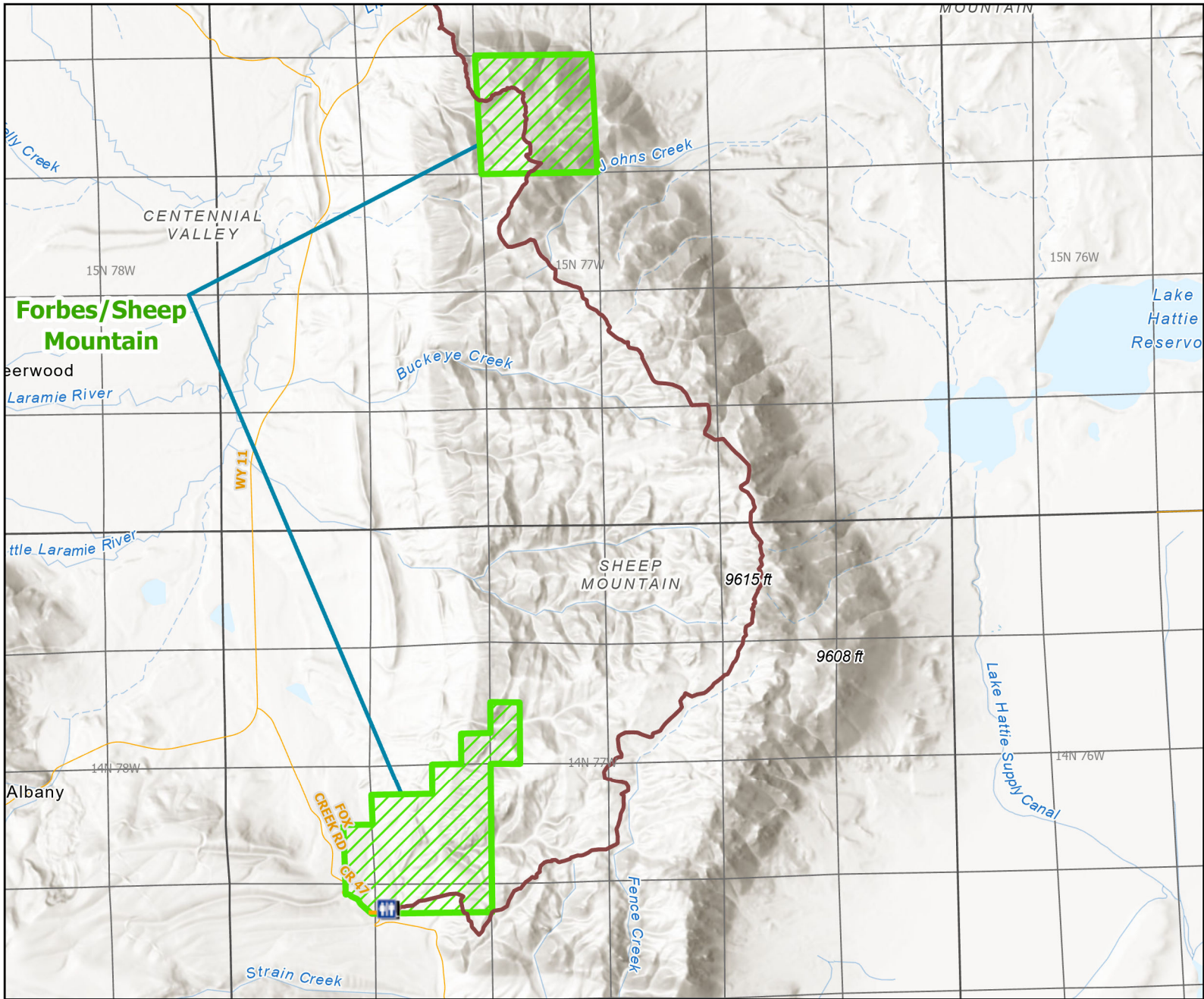




Forbes/Sheep Mountain Wildlife Habitat Management Area



Recreation Options: Fishing, Hunting, Trapping, Camping, Hiking, Wildlife Viewing.

Access Dates: 5/1 - 12/31 THIS AREA OPENS TO ALL HUMAN PRESENCE AT 8:00AM MAY1st.

Seasonal Closure: Closed to all Human Presence Jan. 1 - April 30

Access Exceptions:

Area Regulations: No Recreational shooting. Access road and parking not plowed during winter. 14 day camping limit. ORV use is prohibited.

Shed Limitations: No Collection of shed antlers or horns January 1-May 1 at 8:00 AM

Pheasant Release Dates:

This map is for visual use, assistance and general location only, does not represent a survey, and is not to be used for legal conveyance. Hunt Area boundaries are approximate, consult Game and Fish Hunting Regulations for descriptions and restrictions. Access to these private lands for any commercial activity must be gained by contacting the individual landowner(s) directly.