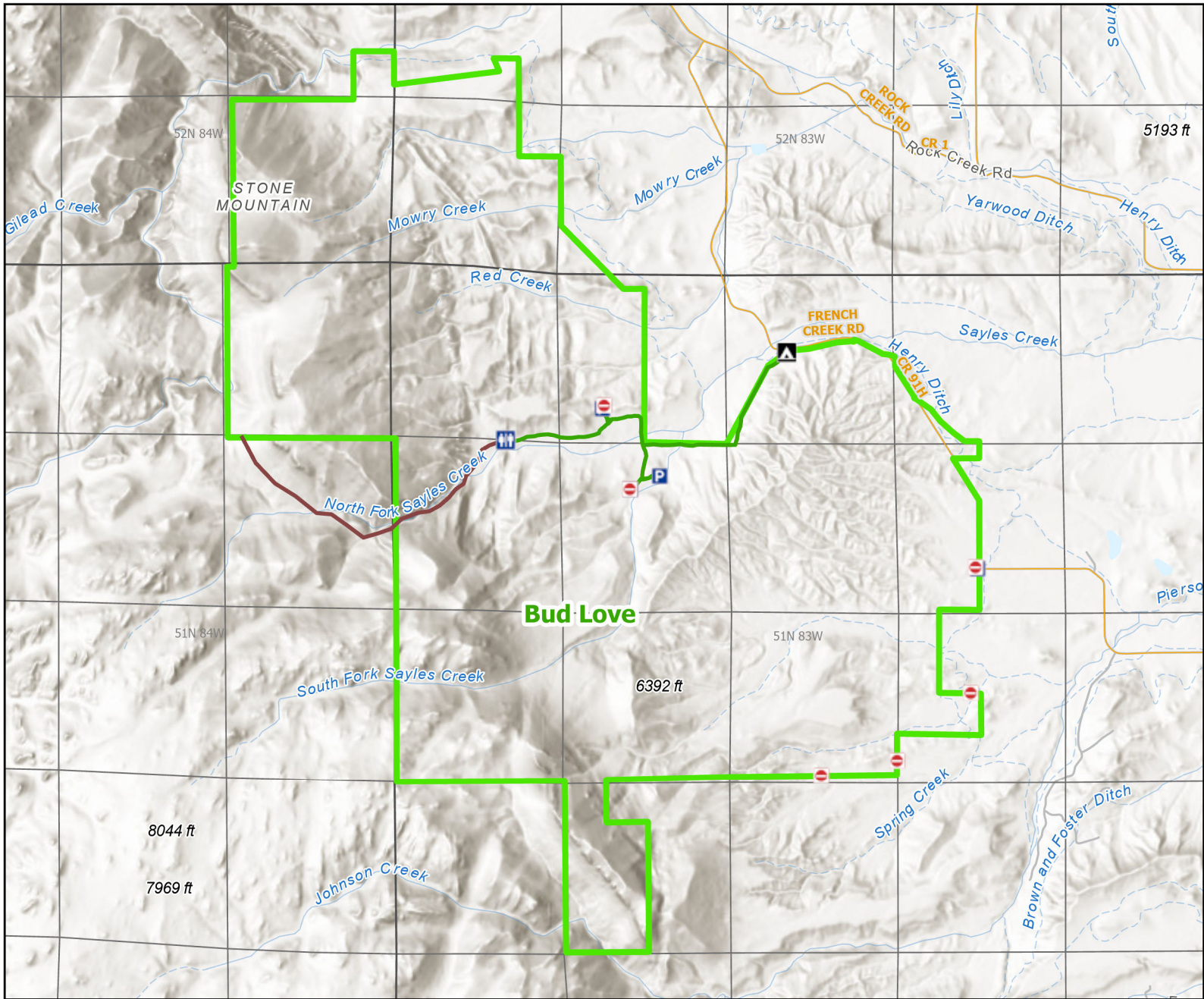




# Bud Love Wildlife Habitat Management Area




Recreation Options: Fishing, Hunting, Camping, Hiking, Trapping (limited)  
 Access Dates: THIS AREA OPENS TO ALL HUMAN PRESENCE AT 8:00AM May 15th.  
 Seasonal Closure: Jan. 1 - May 14  
 Access Exceptions: The Bud Love WHMA shall be closed to the use of any snare or quick-kill body grip trap with a jaw spread exceeding five (5) inches during any open pheasant hunting season  
 Area Regulations: 14 day camping limit. No camping outside of designated camping area. Weed free certified hay only.  
 Shed Limitations:  
 Pheasant Release Dates:

This map is for visual use, assistance and general location only, does not represent a survey, and is not to be used for legal conveyance. Hunt Area boundaries are approximate, consult Game and Fish Hunting Regulations for descriptions and restrictions. Access to these private lands for any commercial activity must be gained by contacting the individual landowner(s) directly.