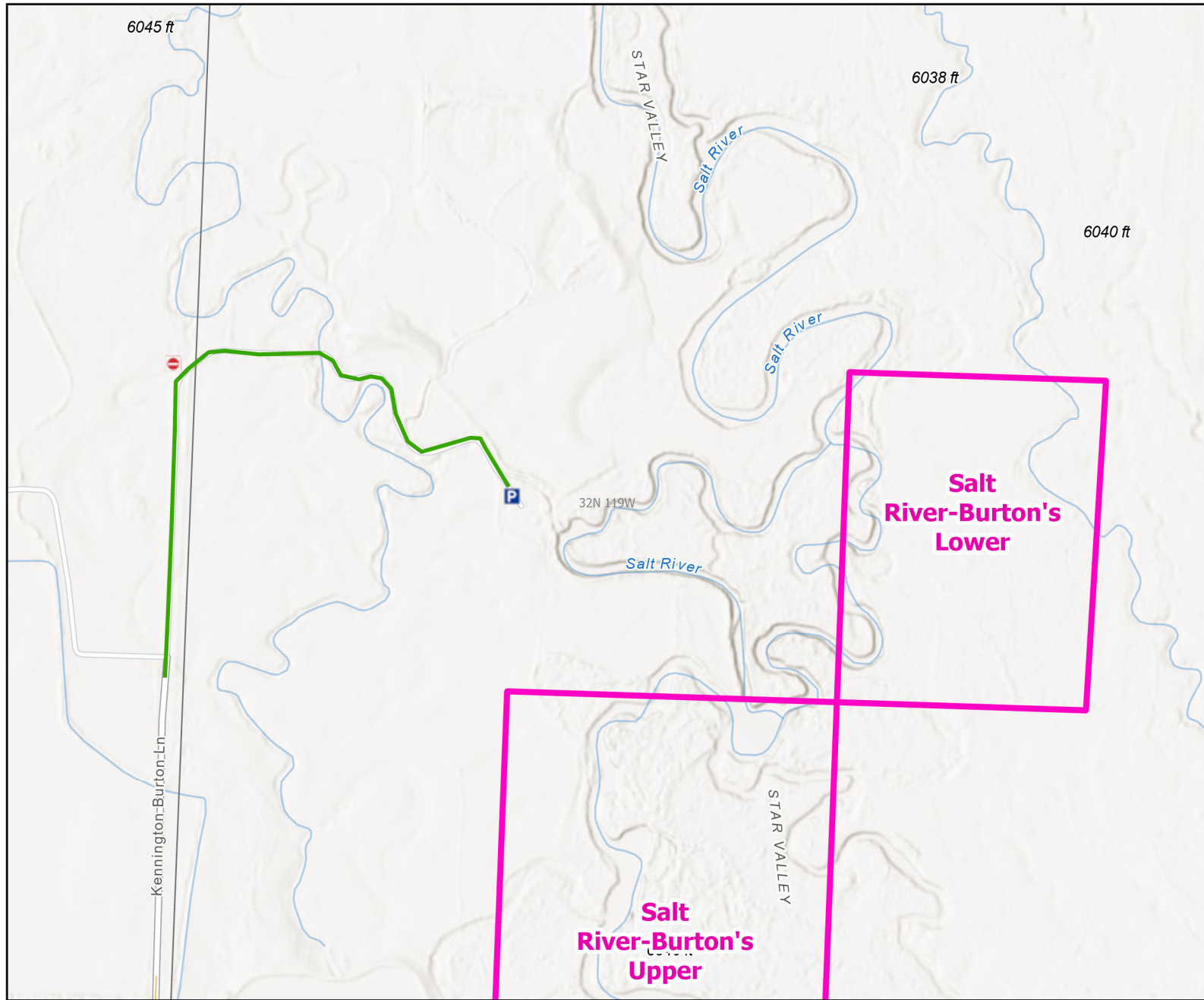




# Salt River-Burton's Lower Public Access Area




**Recreation Options:** Fishing

**Access Dates:** Open year round

**Seasonal Closure:**

**Access Exceptions:**

**Area Regulations:** No hunting. No overnight camping, open fires or fireworks. Easement road and parking area not plowed in winter.

**Shed Limitations:** No collection of shed antlers or horns January 1- May 1 at 6:00 AM

**Pheasant Release Dates:**

This map is for visual use, assistance and general location only, does not represent a survey, and is not to be used for legal conveyance. Hunt Area boundaries are approximate, consult Game and Fish Hunting Regulations for descriptions and restrictions. Access to these private lands for any commercial activity must be gained by contacting the individual landowner(s) directly.