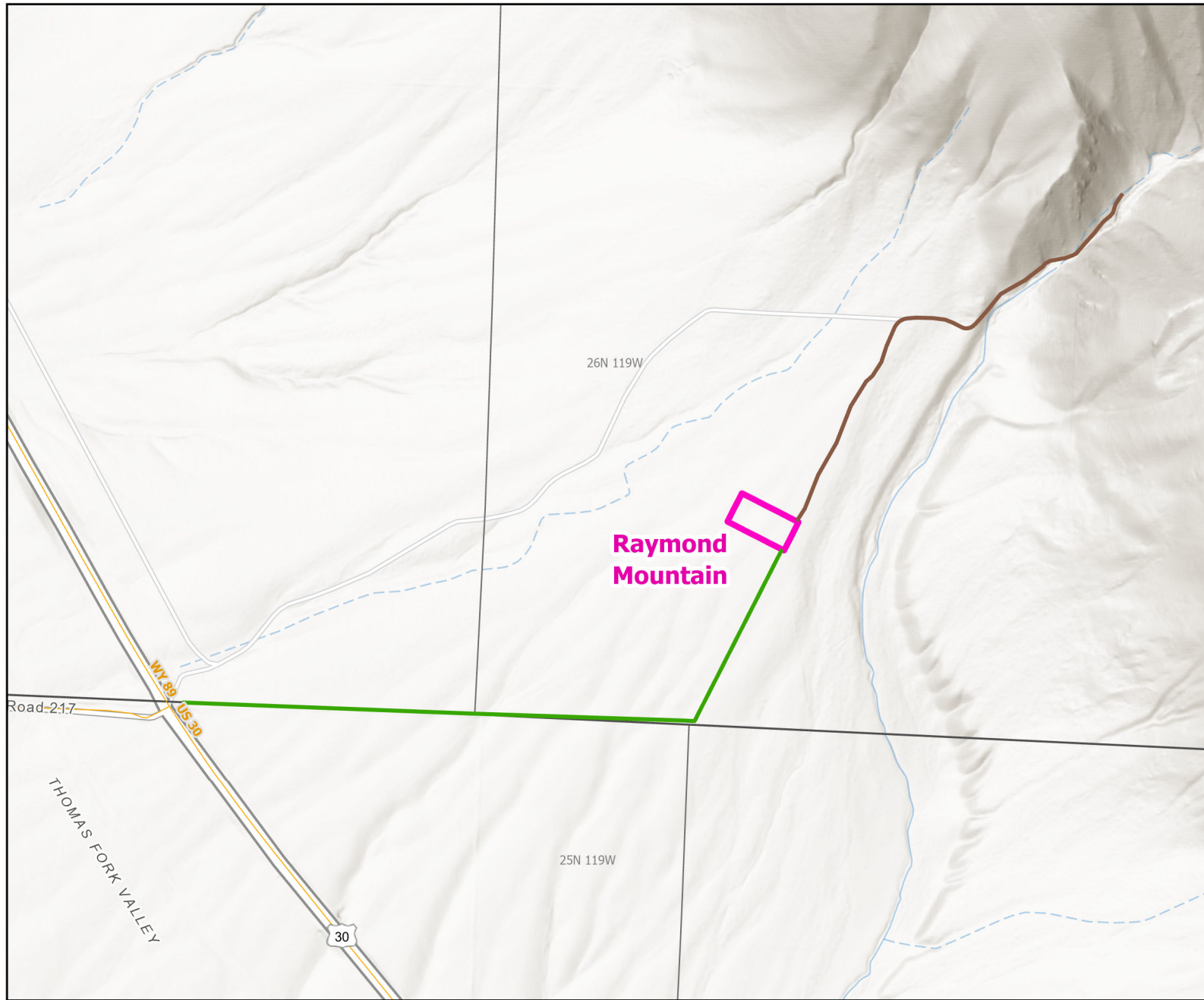




Raymond Mountain Public Access Area



Recreation Options: Fishing, Hunting, Hiking, Wildlife Viewing

Access Dates: Open year round

Seasonal Closure:

Access Exceptions:

Area Regulations: No camping, open fires or fireworks. No ORV-off road motor vehicle use allowed. Please stay on trail and close gates. Recreational livestock must be tied and fed (certified weed free hay required)

Shed Limitations: No collection of shed antlers or horns January 1- May 1 at 6:00 AM

Pheasant Release Dates:

This map is for visual use, assistance and general location only, does not represent a survey, and is not to be used for legal conveyance. Hunt Area boundaries are approximate, consult Game and Fish Hunting Regulations for descriptions and restrictions. Access to these private lands for any commercial activity must be gained by contacting the individual landowner(s) directly.