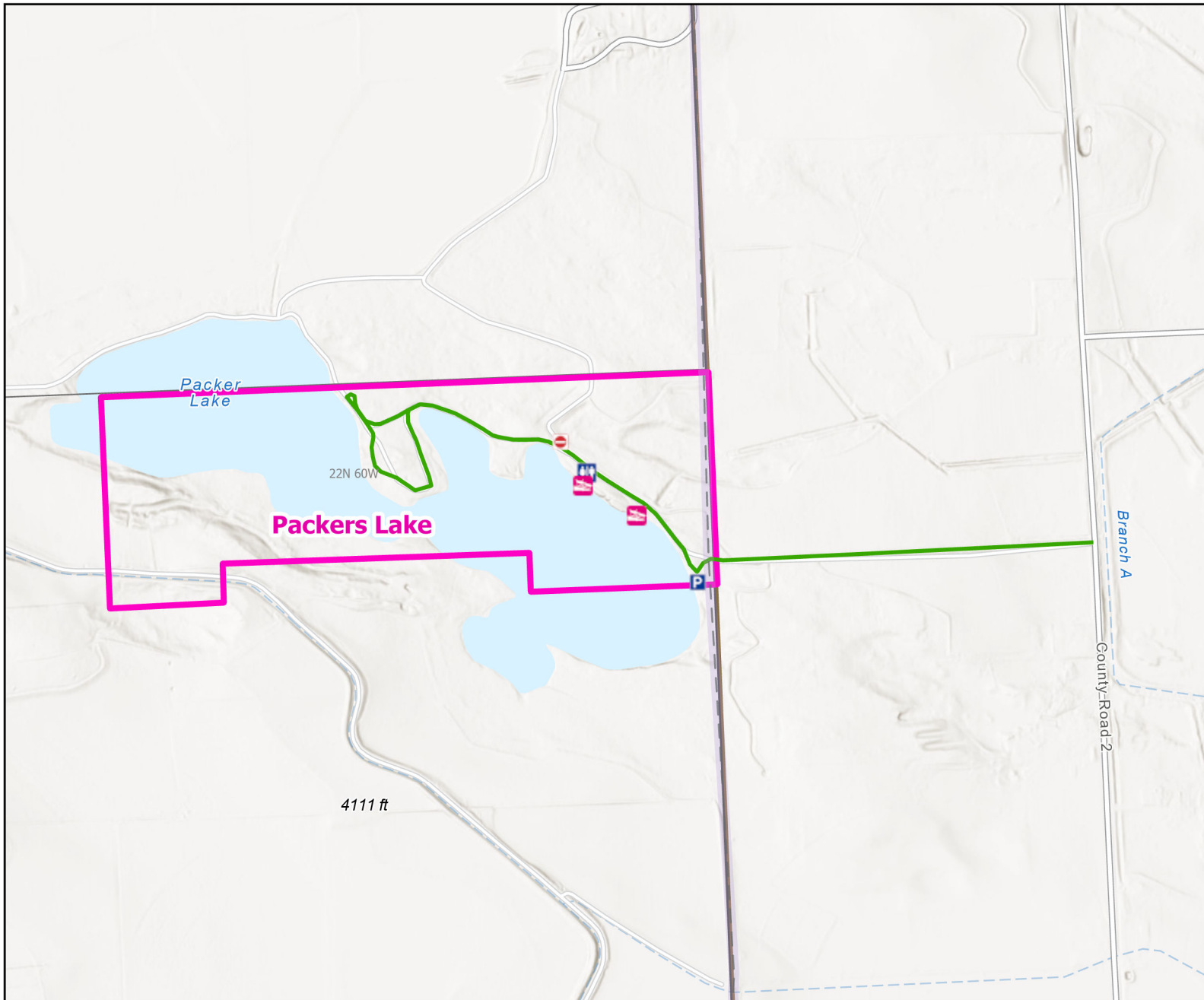




Packers Lake Public Access Area



Recreation Options: Fishing, Boating, 5 day Camping, Hunting, Trapping.

Access Dates: Open year-round

Seasonal Closure:

Access Exceptions:

Area Regulations: Limited to easement area marked with signs No Glass Containers, Camping limit is 5 days, Access road and parking not plowed during winter. No Fireworks. Motorized watercraft in excess of 15 HP is prohibited.

Shed Limitations:

Pheasant Release Dates:

This map is for visual use, assistance and general location only, does not represent a survey, and is not to be used for legal conveyance. Hunt Area boundaries are approximate, consult Game and Fish Hunting Regulations for descriptions and restrictions. Access to these private lands for any commercial activity must be gained by contacting the individual landowner(s) directly.