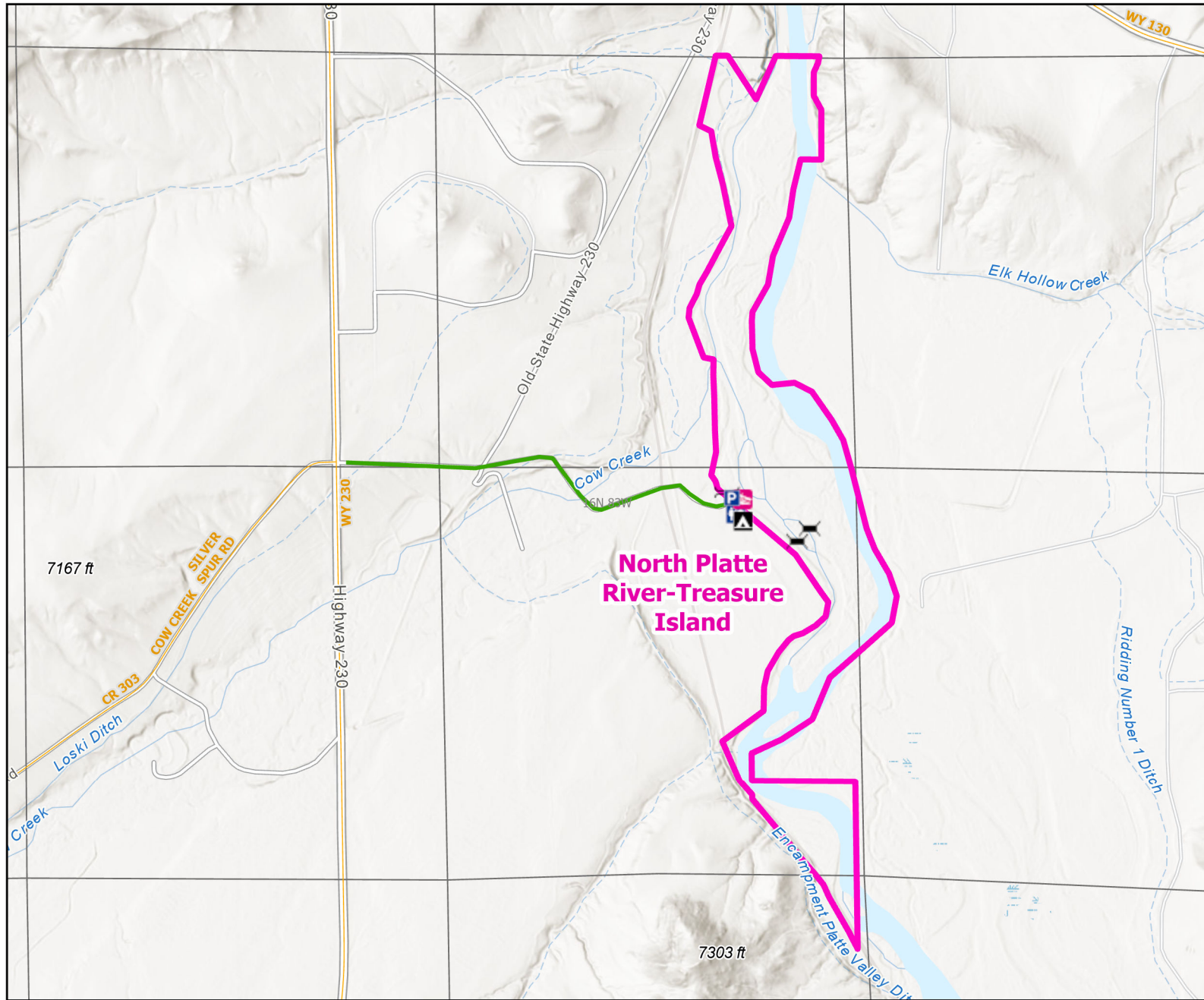




North Platte River-Treasure Island Public Access Area



Recreation Options: Fishing, Hunting, Camping, Hiking, Floating, Wildlife Viewing

Access Dates: Open year round

Seasonal Closure:

Access Exceptions: Private landowners own the streambed on their property. Wading, anchoring or beaching on private lands is prohibited without written permission. Easement on the east side of the island only goes to midstream.

Area Regulations: Limited to WGFC Land or easement marked with signs 5 Day Camping Limit in designated area only. Access road and parking not plowed during winter.

Shed Limitations: No Collection of shed antlers or horns January 1-May 1 at 6:00 AM

Pheasant Release Dates:

This map is for visual use, assistance and general location only, does not represent a survey, and is not to be used for legal conveyance. Hunt Area boundaries are approximate, consult Game and Fish Hunting Regulations for descriptions and restrictions. Access to these private lands for any commercial activity must be gained by contacting the individual landowner(s) directly.