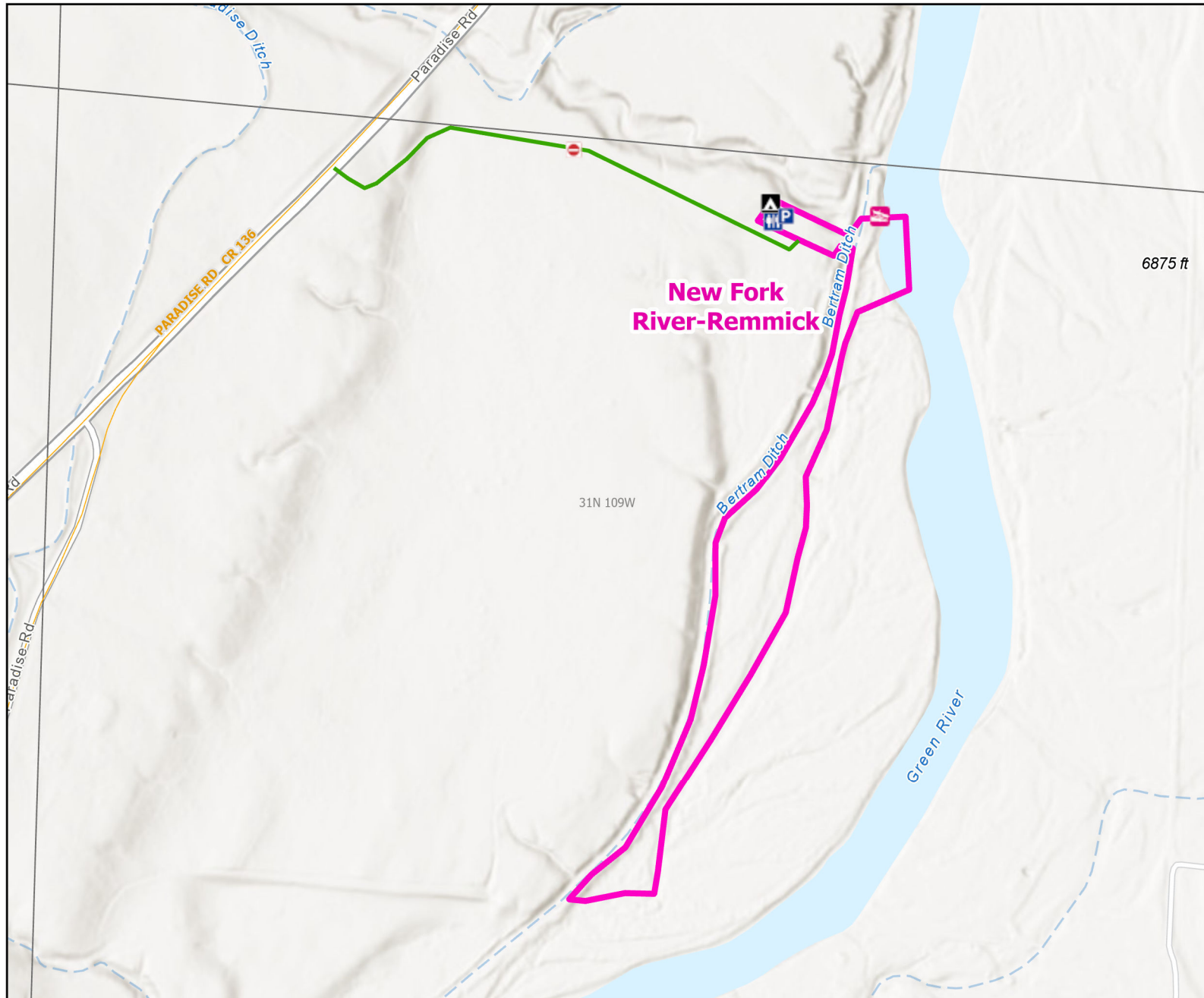




New Fork River-Remmick Public Access Area



Recreation Options: Fishing, Waterfowl Hunting, Camping, Hiking, Floating, Wildlife Viewing
 Access Dates: Open year round
 Seasonal Closure:
 Access Exceptions:
 Area Regulations: Fishing and waterfowl hunting only. 5 day camping limit. No open fires or fireworks.
 Access limited to easement area marked
 Shed Limitations: No collection of shed antlers or horns January 1- May 1 at 6:00 AM
 Pheasant Release Dates:

This map is for visual use, assistance and general location only, does not represent a survey, and is not to be used for legal conveyance. Hunt Area boundaries are approximate, consult Game and Fish Hunting Regulations for descriptions and restrictions. Access to these private lands for any commercial activity must be gained by contacting the individual landowner(s) directly.