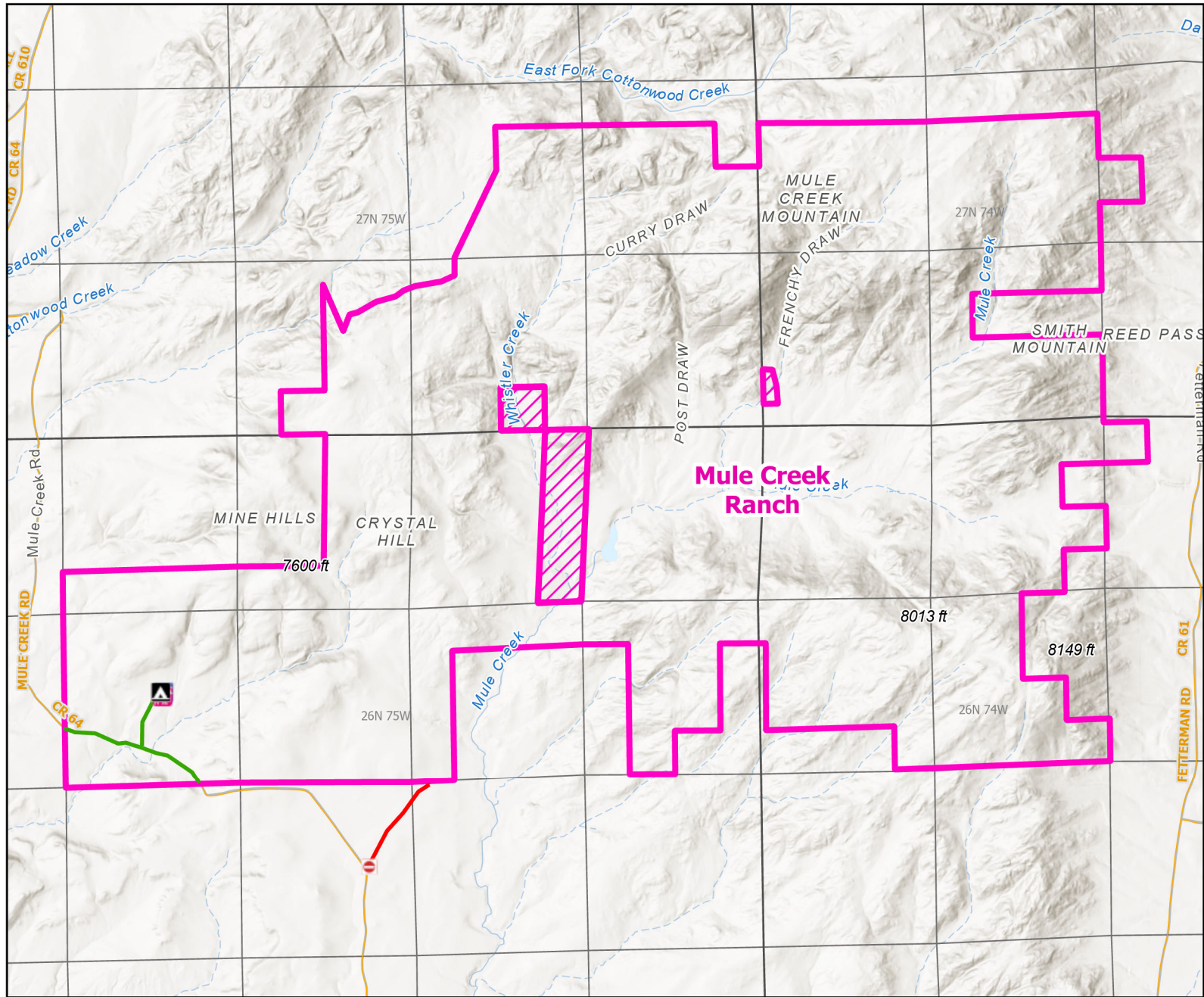




# Mule Creek Ranch Public Access Area




**Recreation Options:** Big Game Hunting

**Access Dates:** 10/15 - 1/31 Open Oct. 15 - Jan. 31. Access limited to easement area marked with signs.

**Seasonal Closure:**

**Access Exceptions:** Access is restricted to licensed big game hunters with a valid permission slip from WGFD.

**Area Regulations:** Closed Feb. 1 - Oct. 14, Overnight camping permitted with Mule Creek PAA permission slip. Parking permitted at corrals, corral use is permitted with Mule Creek PAA permission slip. No Off Road Vehicles, Access road and parking not plowed during winter. Open fires, fireworks and littering is strictly prohibited.

**Shed Limitations:**

**Pheasant Release Dates:**

This map is for visual use, assistance and general location only, does not represent a survey, and is not to be used for legal conveyance. Hunt Area boundaries are approximate, consult Game and Fish Hunting Regulations for descriptions and restrictions. Access to these private lands for any commercial activity must be gained by contacting the individual landowner(s) directly.