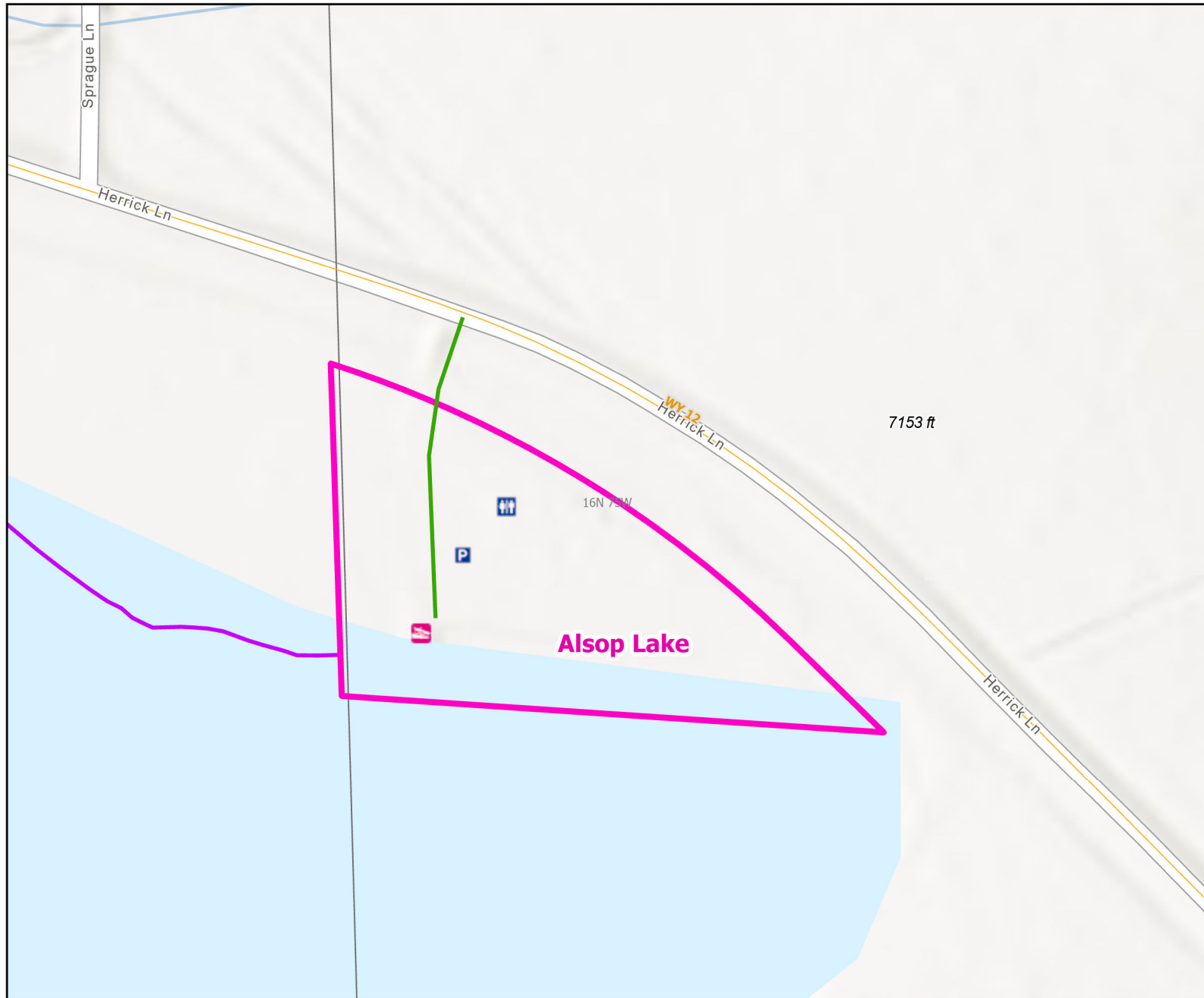




Alsop Lake Public Access Area



| | | | | | | |
|--|--|--|--|--|--|--|
| | | | | | | |
| | | | | | | |
| | | | | | | |
| | | | | | | |
| | | | | | | |

Recreation Options: Fishing, Waterfowl Hunting, Boating
 Access Dates: Open year-round
 Seasonal Closure:
 Access Exceptions:
 Area Regulations: Limited to easement area marked with signs Access road and parking not plowed during winter. No Overnight Camping, No Open fires, No Fireworks, ORV use is prohibited.
 Shed Limitations: No Collection of shed antlers or horns January 1-May 1 at 6:00 AM
 Pheasant Release Dates:

This map is for visual use, assistance and general location only, does not represent a survey, and is not to be used for legal conveyance. Hunt Area boundaries are approximate, consult Game and Fish Hunting Regulations for descriptions and restrictions. Access to these private lands for any commercial activity must be gained by contacting the individual landowner(s) directly.