

# 2019 HUNTERS, WE NEED YOUR HELP!



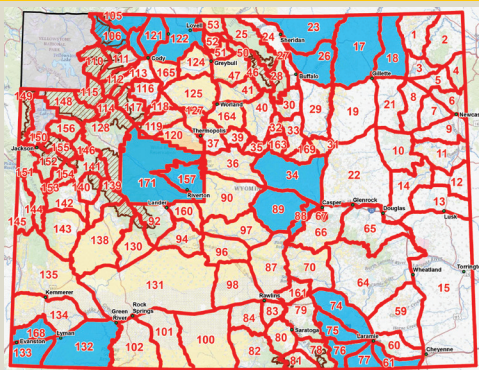
## CHRONIC WASTING DISEASE MONITORING AND SURVEILLANCE

Since 1997, the Wyoming Game and Fish has been monitoring the distribution and prevalence of chronic wasting disease (CWD) to better understand how this disease may affect the health of Wyoming's deer and elk populations. Initial surveillance goals focused on the detection of CWD in new areas of the state along with monitoring the disease. This disease has now been identified in most deer hunt areas across Wyoming and necessitates a shift in focus of

the program from detection to monitoring. Continued monitoring of CWD over time is important to help Game and Fish understand the potential impacts of the disease as well as evaluate future management actions for deer and elk. This will be a challenge for Game and Fish, as collecting samples for valid estimates of prevalence requires large sample sizes in focused areas across the state. The Game and Fish Wildlife Health Laboratory has limited testing capacity to monitor CWD

across the entire state, so focused sampling will rotate hunt areas each year. **Hunters are very important in helping Game and Fish understand the disease and achieve CWD monitoring goals. Game and Fish is asking that if you harvest a deer or elk in the hunt areas listed below, please submit a sample for testing to help achieve our goals.** Hunters outside of this year's focused surveillance areas can still submit a sample for testing.

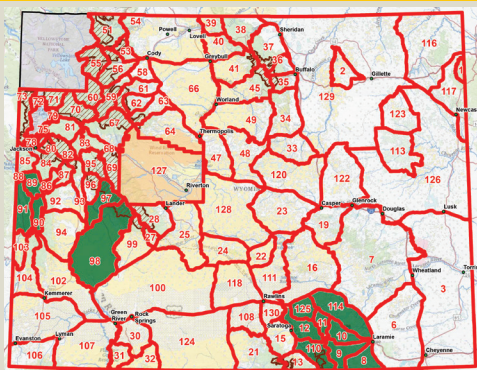
### CWD MONITORING DEER FOCUS AREAS



#### CWD MONITORING DEER FOCUS AREAS

**DEER HUNT AREAS:** 17, 18, 23, 26, 34, 61, 74-77, 88, 89, 105, 106, 109, 121-123, 132, 133, 157, 168, 171






### CWD MONITORING ELK FOCUS AREAS



#### CWD MONITORING ELK FOCUS AREAS

**ELK HUNT AREAS:** 8-12, 88-91, 97, 98, 110, 114, 125

### THERE ARE SEVERAL WAYS TO GET YOUR HARVESTED ANIMAL TESTED:

-  **Game check station** – someone is normally available to sample your harvested animal for CWD.
-  **WGFD regional office** – you may have to leave the head if personnel are not immediately available.
-  Results from WGFD surveillance are usually available online within 3 weeks.
-  If you want results within 10 working days, contact the Wyoming State Veterinary Lab in Laramie at (307) 766-9925 (\$30 fee).
-  Quarter and freeze your animal until test results are returned to save on meat processing costs if your animal is positive.

### FOR MORE INFORMATION CONTACT YOUR GAME AND FISH REGIONAL OFFICE

#### **Cheyenne Headquarters**

(307) 777-4600 • (800) 842-1934  
5400 Bishop Blvd., Cheyenne, WY 82006

#### **Casper Region**

(307) 473-3400 • (800) 233-8544  
3030 Energy Lane, Casper, WY 82604  
*(Deer hunt areas 34, 88, 89)*

#### **Cody Region**

(307) 527-7125 • (800) 654-1178  
2820 State Highway 120, Cody, WY 82414  
*(Deer hunt areas 105, 106, 109, 121-123)*

#### **Green River Region**

(307) 875-3223 • (800) 843-8096  
351 Astle, Green River, WY 82935  
*(Deer hunt areas 132, 133, 168)*

#### **Jackson Region**

(307) 733-2321 • (800) 423-4113  
420 North Cache, Jackson, WY 83001  
Mailing Address: P.O. Box 67, Jackson,  
WY 83001 *(Elk hunt areas 88-91)*

#### **Lander Region**

(307) 332-2688 • (800) 654-7862  
260 Buena Vista, Lander, WY 82520  
*(Deer hunt areas 157, 171)*

#### **Laramie Region**

(307) 745-4046 • (800) 843-2352  
1212 South Adams Street, Laramie WY  
82070  
*(Deer hunt areas 61, 74-77; Elk hunt areas  
8-12, 110, 114, 125)*

#### **Pinedale Region**

(307) 367-4353 • (800) 452-9107  
432 East Mill Street, Pinedale, WY 82941  
Mailing Address: P.O. Box 850, Pinedale,  
WY 82941 *(Elk hunt areas 97, 98)*

#### **Sheridan Region**

(307) 672-7418 • (800) 331-9834  
700 Valley View Drive, Sheridan, WY  
82801  
*(Deer hunt areas 17, 18, 23, 26)*



## WHAT IS CHRONIC WASTING DISEASE?

Chronic wasting disease (CWD) is a chronic, fatal disease of the central nervous system in mule deer, white-tailed deer, elk, and moose. CWD belongs to the group of rare diseases called transmissible spongiform encephalopathies (TSEs). These disorders are caused by abnormal proteins called “prions”.

## WHAT DO DEER AND ELK WITH CWD LOOK LIKE?

Early in disease, animals show no clinical signs. Later on, affected animals show weight loss, reluctance to move, excessive salivation, droopy ears, increased drinking and urinating, lethargy, and eventually death. Not all animals will show the typical signs of CWD. The majority of all CWD positive animals that are harvested appear completely normal. The only way to know whether your harvested animal has CWD is to have it tested.

## HOW IS CWD TRANSMITTED?

Evidence suggests that CWD is transmitted via saliva, urine, feces, or even infected carcasses. Animals may also be infected through the environment via contamination of feed or pasture with prions (which can persist for 10+ years).

## HOW OFTEN DOES IT OCCUR?

The prevalence of CWD is higher in deer than elk, and tends to be higher in bucks than in does. CWD is most prevalent in the southeastern quadrant and within the Bighorn Basin of Wyoming. Over the past 30 years, Wyoming has seen CWD prevalence increase in many hunt areas across the state.

## HOW DOES CWD AFFECT DEER, ELK, AND MOOSE POPULATIONS?

Research suggests that CWD can lead to declines in some deer populations and possibly elk populations at high prevalence. Additional data suggests that CWD can decrease the number of older bucks in a population. There is currently no data to suggest population impacts in moose.

## IS IT SAFE TO EAT A CWD INFECTED ANIMAL?

To date, there have been no cases of CWD in humans and no strong evidence for the occurrence of CWD in people. However, experimental studies raise the concern that CWD may pose a risk to humans and suggest that it is important to prevent human exposure. Therefore, the Centers for Disease Control and the World Health Organization recommend that CWD positive animals not be consumed.

## WHAT PRECAUTIONS SHOULD HUNTERS TAKE?

- Animals that appear sick or test positive for CWD should not be consumed.
- Wear rubber or latex gloves when field dressing carcasses.
- Minimize handling of brain and spinal tissues and wash your hands and instruments afterwards.
- Do not eat the brain, spinal cord, eyes, spleen and lymph nodes.
- When butchering, meat should be boned out.
- Knives and other butchering equipment can be disinfected by soaking in 50% household bleach for 1 hour (may damage some equipment).

## WHERE CAN I HAVE A DEER, ELK, OR MOOSE TESTED?

There are several ways to get your harvested animal tested:

- Take your harvested animal to a check station and ask them to sample your animal for CWD.
- Take your harvested animal to a WGFD regional office – if no one is available to take a sample, you may have to leave the head for samples to be collected when personnel are available.
- Results from WGFD surveillance are usually available online within 3 weeks. <https://wgfd.wyo.gov/Wildlife-in-Wyoming/More-Wildlife/Wildlife-Disease>
- If you want results within 10 working days, you can go to the Wyoming State Veterinary Lab in Laramie and pay a \$30 fee for testing (307) 766-9925.
- Quarter and freeze your animal until test results are available to save on meat processing costs if your animal is positive.

## WHAT CAN YOU DO TO HELP?

- In focus monitoring and surveillance areas, have your harvest tested for CWD to help with the Game and Fish monitoring program.
- Report sick deer, elk, and moose to the Wyoming Game and Fish Department Removing CWD positive animals from the landscape can help to minimize transmission of the disease.
- Follow carcass transport regulations that apply to animals harvested in hunt areas where CWD is known to occur, as well as carcass import regulations of your home state if you are a nonresident.