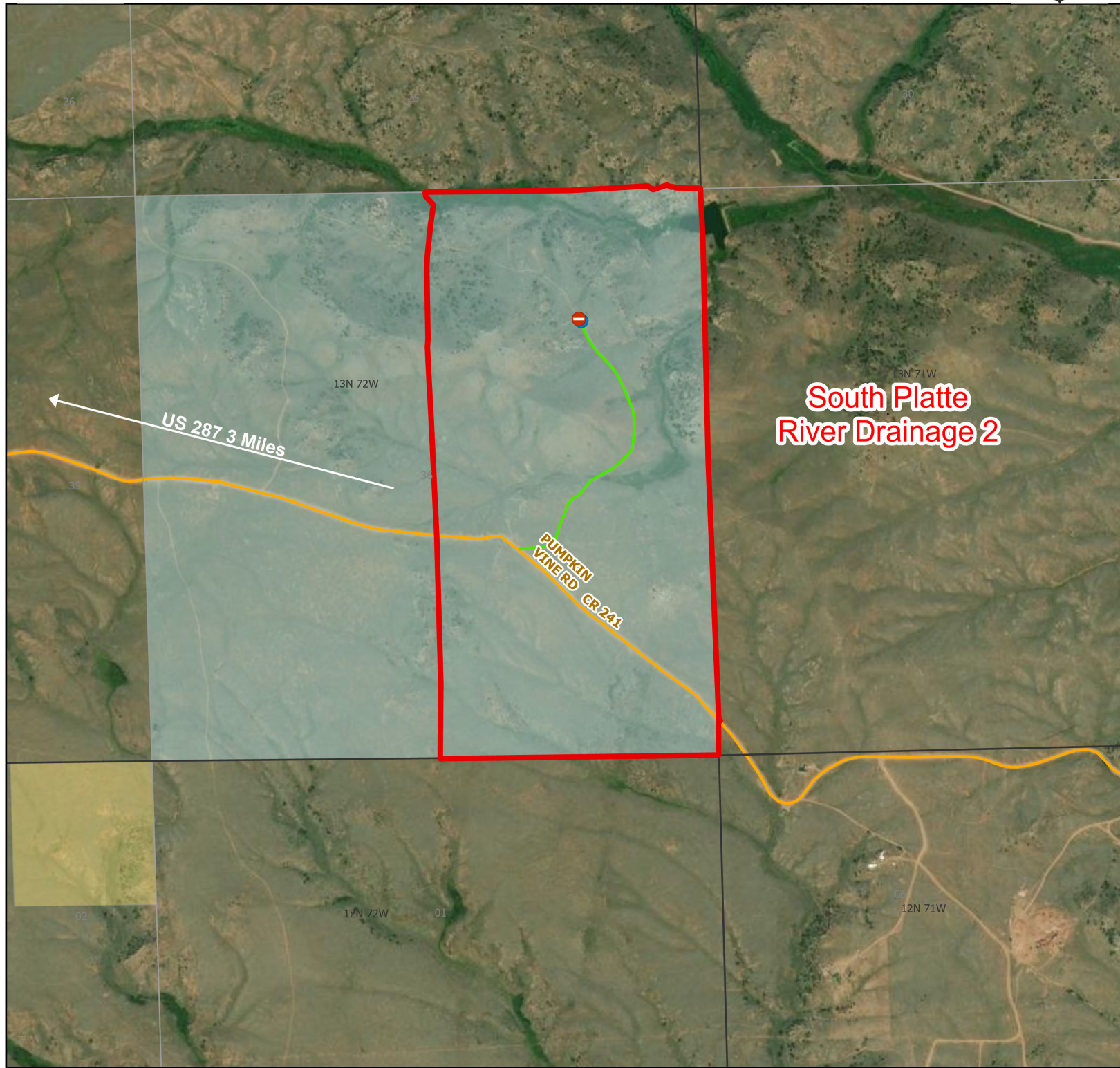




South Platte River 2 Walk-In Fishing Area



**South Platte
River Drainage 2**

US 287 3 Miles

PUMPKIN
VINE RD
CR 241

13N 72W

13N 71W

35

38

34

02

12N 72W

01

06

12N 71W

- Parking
- Boat Ramp
- Road Closed
- Access Roads
- Roads
- Boundary
- CLOSED
- State
- BLM
- Forest Service
- DOD
- Wyoming Game & Fish Dept.
- Private



Water Name: Johnson Creek 2024 Fish Season
 Species Available: Brook Trout Access Dates: 01/01 - 12/31
 Special Restrictions: State lands are enrolled in this Walk-in Area. All access restrictions apply.

This map is for visual use, assistance and general location only, does not represent a survey, and is not to be used for legal conveyance. Area boundaries are approximate and can change. Signs will mark the actual access boundaries.