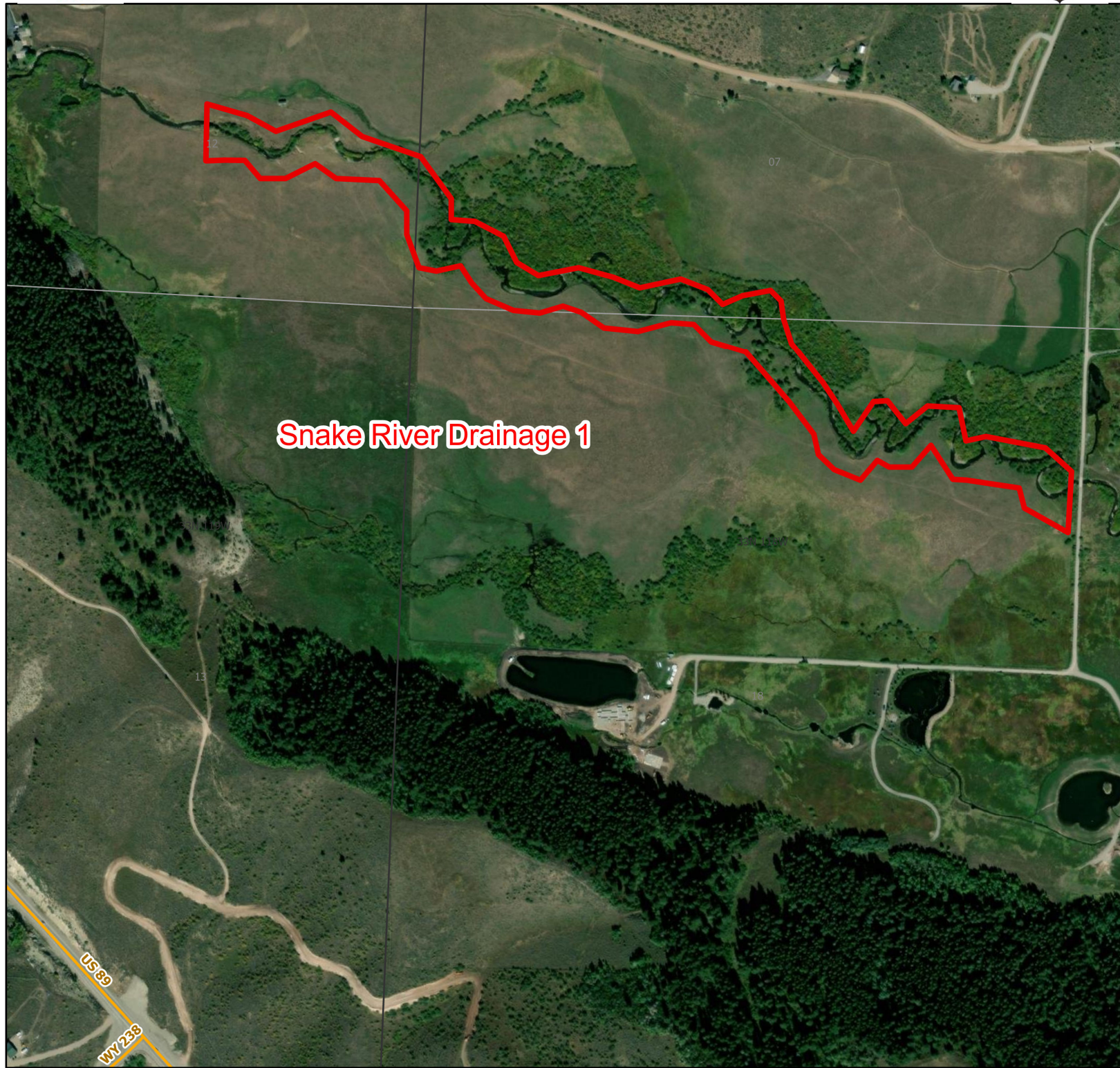




Snake River 1 Walk-In Fishing Area



Snake River Drainage 1

- | | | | | | |
|-------------|--------------|----------|--------|----------------|---------------------------|
| Parking | Access Roads | Boundary | CLOSED | State | DOD |
| Boat Ramp | Roads | | | BLM | Wyoming Game & Fish Dept. |
| Road Closed | | | | Forest Service | Private |



Water Name: Willow Creek 2024 Fish Season

Species Available: Snake River Cutthroat Trout Access Dates: 01/01 - 12/31

Special Restrictions: Park along Willow Creek Road (County Road 126) and walk to the creek.

This map is for visual use, assistance and general location only, does not represent a survey, and is not to be used for legal conveyance. Area boundaries are approximate and can change. Signs will mark the actual access boundaries.