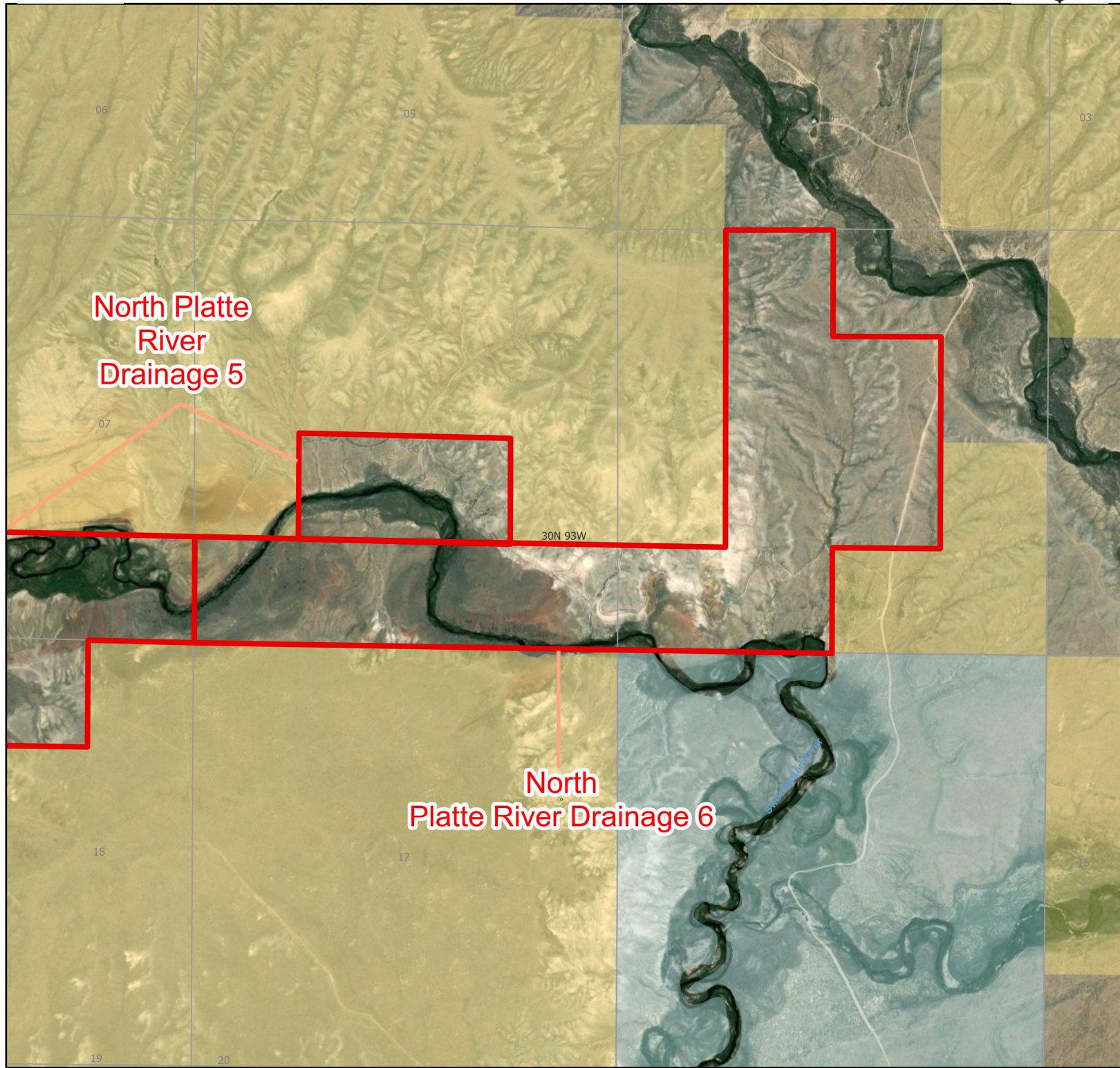




# North Platte River 6 Walk-In Fishing Area



North Platte  
River  
Drainage 5

North  
Platte River Drainage 6

- |             |              |          |        |                |                           |
|-------------|--------------|----------|--------|----------------|---------------------------|
| Parking     | Access Roads | Boundary | CLOSED | State          | DOD                       |
| Boat Ramp   | Roads        |          |        | BLM            | Wyoming Game & Fish Dept. |
| Road Closed |              |          |        | Forest Service | Private                   |



Water Name: Sweetwater River 2024 Fish Season  
Access Dates: 01/01 - 12/31

Species Available: Brook Trout, Rainbow Trout, Cutthroat Trout

Special Restrictions: Motorized vehicle access limited to designated roads only. Designated roads are marked with a white arrow. Park along the road or at designated parking areas. Camping and other activities are allowed through landowner permission only.

This map is for visual use, assistance and general location only, does not represent a survey, and is not to be used for legal conveyance. Area boundaries are approximate and can change. Signs will mark the actual access boundaries.