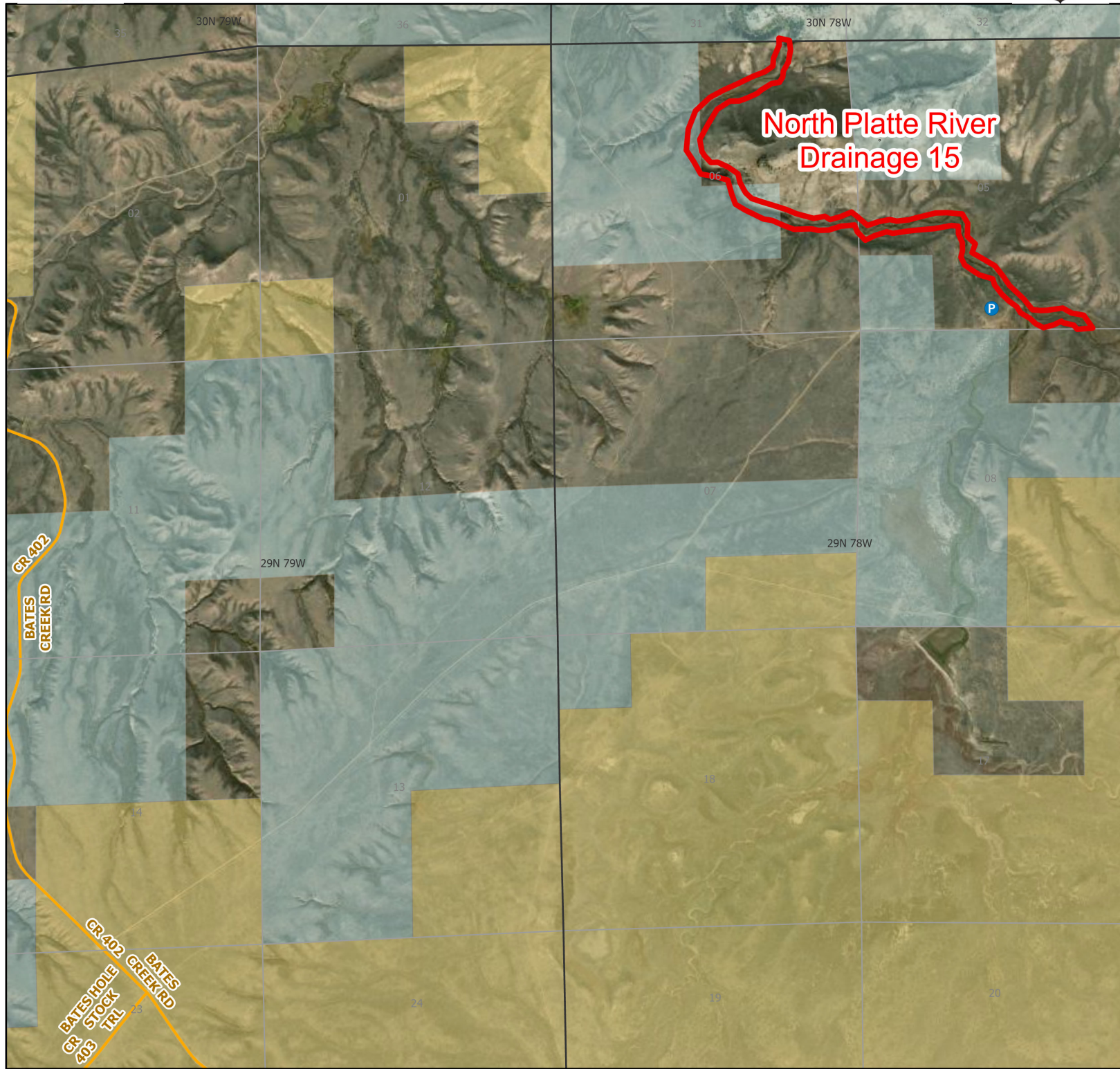




North Platte River 15 Walk-In Fishing Area



Parking	Access Roads	Boundary	CLOSED	State	DOD
Boat Ramp	Roads			BLM	Wyoming Game & Fish Dept.
Road Closed				Forest Service	Private



Water Name: Bates Creek
 Species Available: Brook Trout
 Special Restrictions: All vehicles must park in designated parking areas only. NO ORVs. No dogs allowed from May 1 - November 1. No ATV's.

2024 Fish Season
 Access Dates: 01/01 - 12/31

This map is for visual use, assistance and general location only, does not represent a survey, and is not to be used for legal conveyance. Area boundaries are approximate and can change. Signs will mark the actual access boundaries.