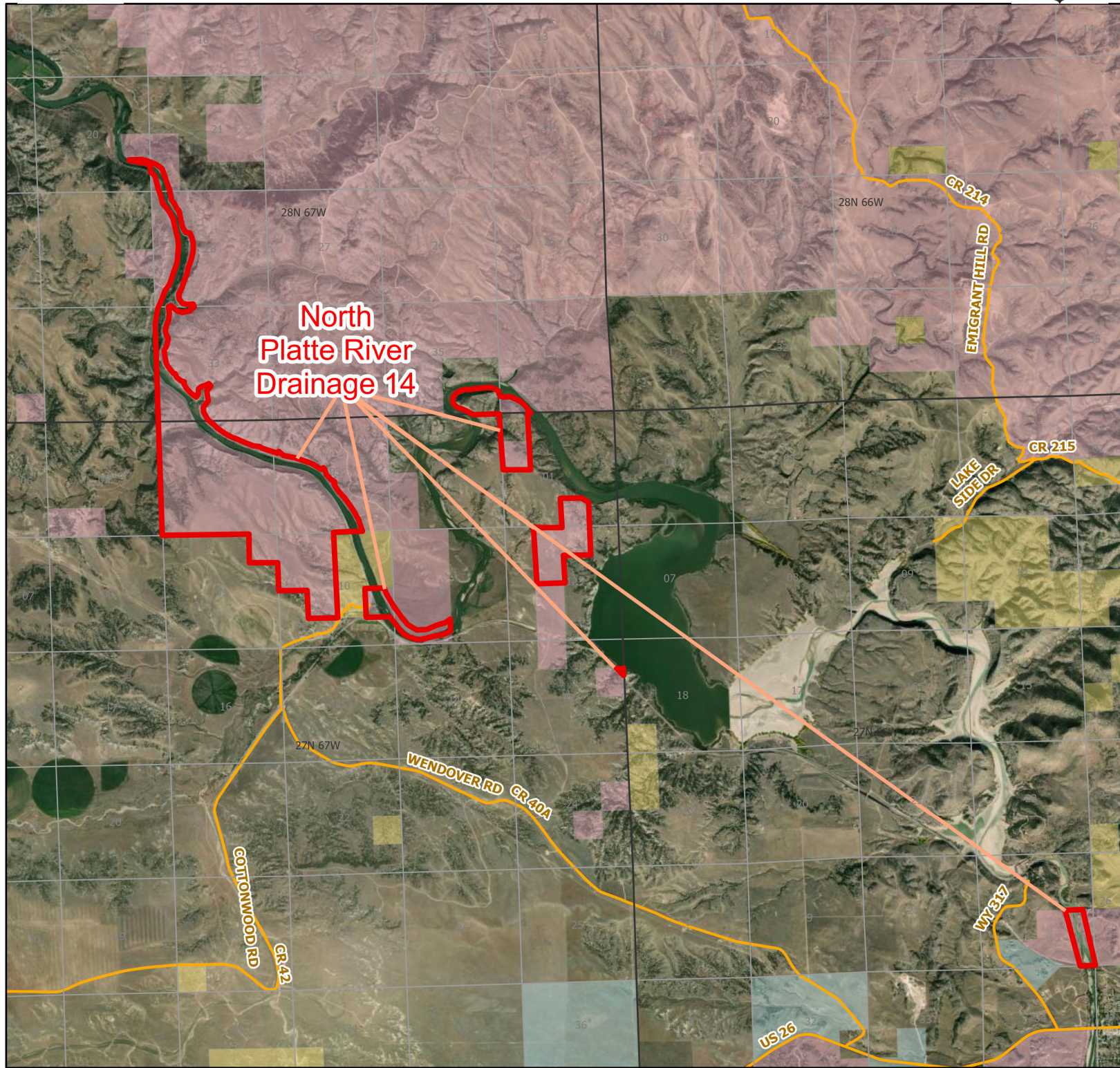




North Platte River 14 Walk-In Fishing Area



North
Platte River
Drainage 14

- | | | | | | |
|-------------|--------------|----------|--------|----------------|---------------------------|
| Parking | Access Roads | Boundary | CLOSED | State | DOD |
| Boat Ramp | Roads | | | BLM | Wyoming Game & Fish Dept. |
| Road Closed | | | | Forest Service | Private |



Water Name: North Platte River 2024 Fish Season
Access Dates: 01/01 - 12/31

Species Available: Brown Trout, Rainbow Trout

Special Restrictions: All vehicles must park in designated parking areas only. Stay off railroad tracks & rights of ways. Access boundary is 50 feet from high water line on north shore

This map is for visual use, assistance and general location only, does not represent a survey, and is not to be used for legal conveyance. Area boundaries are approximate and can change. Signs will mark the actual access boundaries.