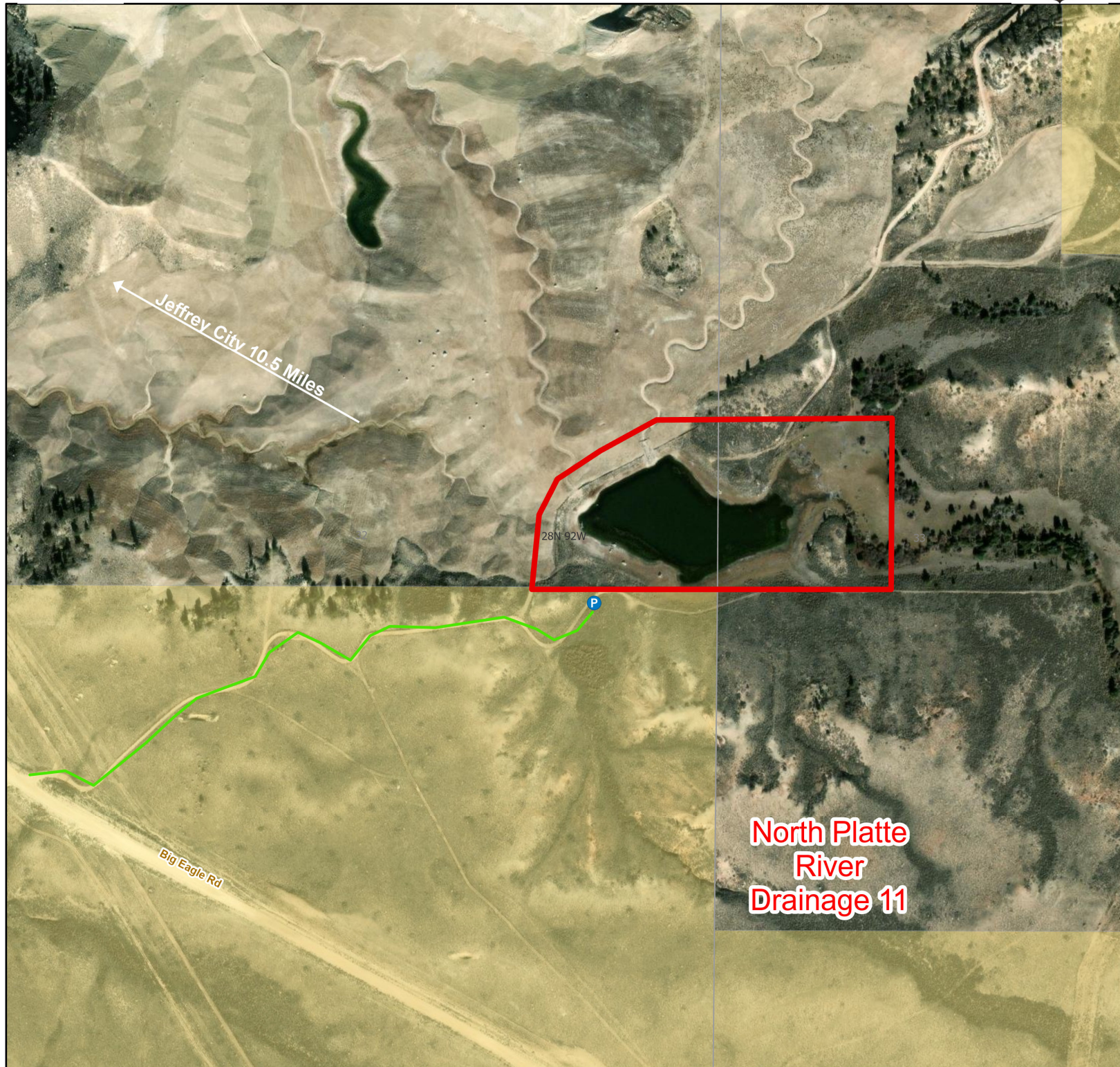




North Platte River 11 Walk-In Fishing Area



North Platte
River
Drainage 11

- | | | | | | |
|-------------|--------------|----------|--------|----------------|---------------------------|
| Parking | Access Roads | Boundary | CLOSED | State | DOD |
| Boat Ramp | Roads | | | BLM | Wyoming Game & Fish Dept. |
| Road Closed | | | | Forest Service | Private |



Water Name: Macintosh Pond

2024 Fish Season
Access Dates: 01/01 - 12/31

Species Available: Rainbow Trout, Brook Trout, Largemouth Bass, Fathead Minnow, Lake Chub

Special Restrictions: All vehicles must park in designated parking areas only. Motorized vehicle access limited to designated roads only. Designated roads are marked with a white arrow. No use of motor vehicles, motorized watercraft, or horses permitted. The use of ice augers are permitted in winter.

This map is for visual use, assistance and general location only, does not represent a survey, and is not to be used for legal conveyance. Area boundaries are approximate and can change. Signs will mark the actual access boundaries.