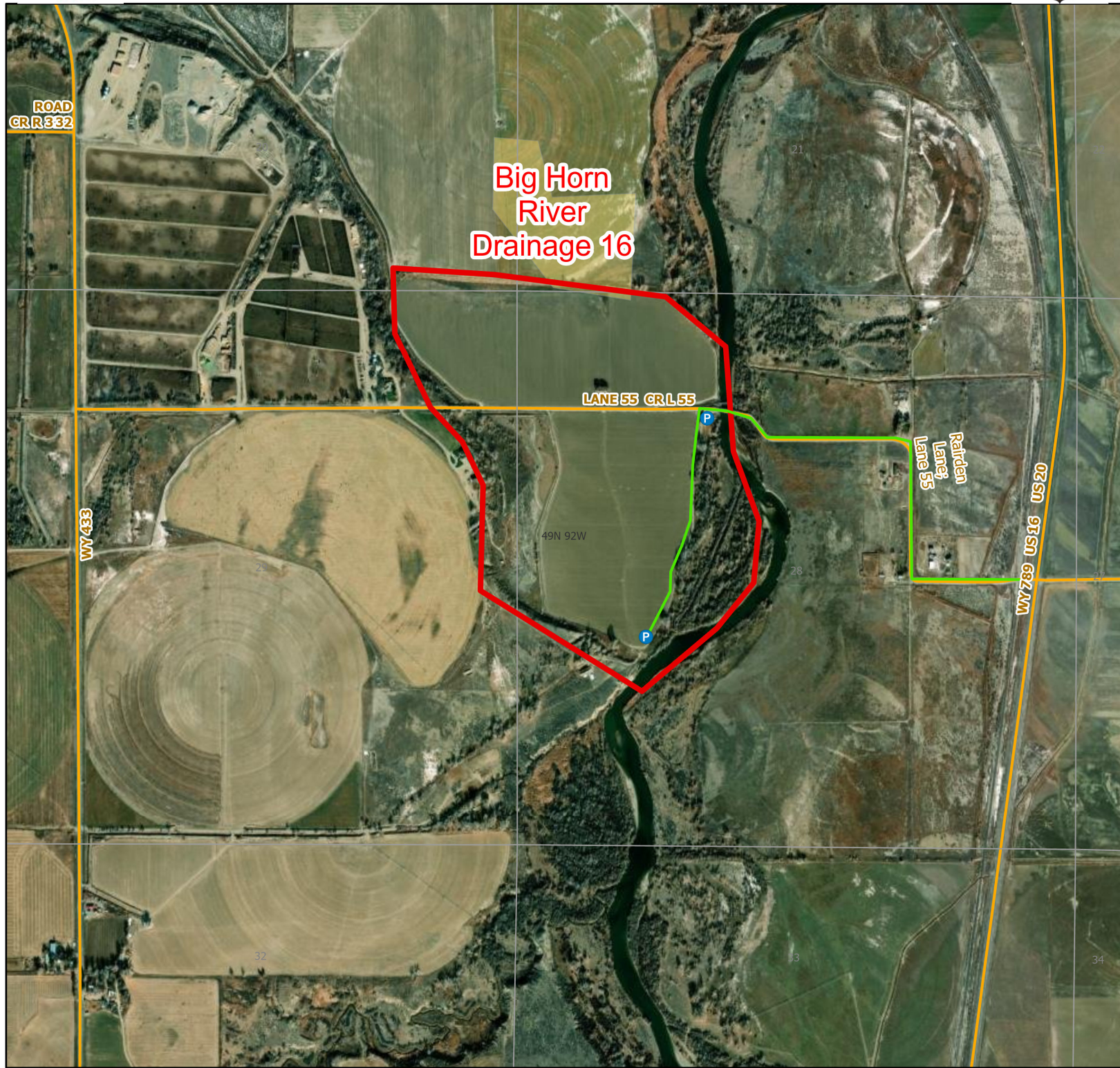




# Big Horn River 16 Walk-In Fishing Area



Parking	Access Roads	Boundary	CLOSED	State	DOD
Boat Ramp	Roads			BLM	Wyoming Game & Fish Dept.
Road Closed				Forest Service	Private



Water Name: Bighorn River 2024 Fish Season  
Access Dates: 01/01 - 12/31

Species Available: Channel Catfish, Sauger, Shovelnose Sturgeon

Special Restrictions: All vehicles must park in designated parking areas only. Motorized vehicle access limited to designated roads only. Designated roads are marked with a white arrow. Access on west side of Big Horn River only

This map is for visual use, assistance and general location only, does not represent a survey, and is not to be used for legal conveyance. Area boundaries are approximate and can change. Signs will mark the actual access boundaries.