

Platte Valley Mule Deer Initiative Update

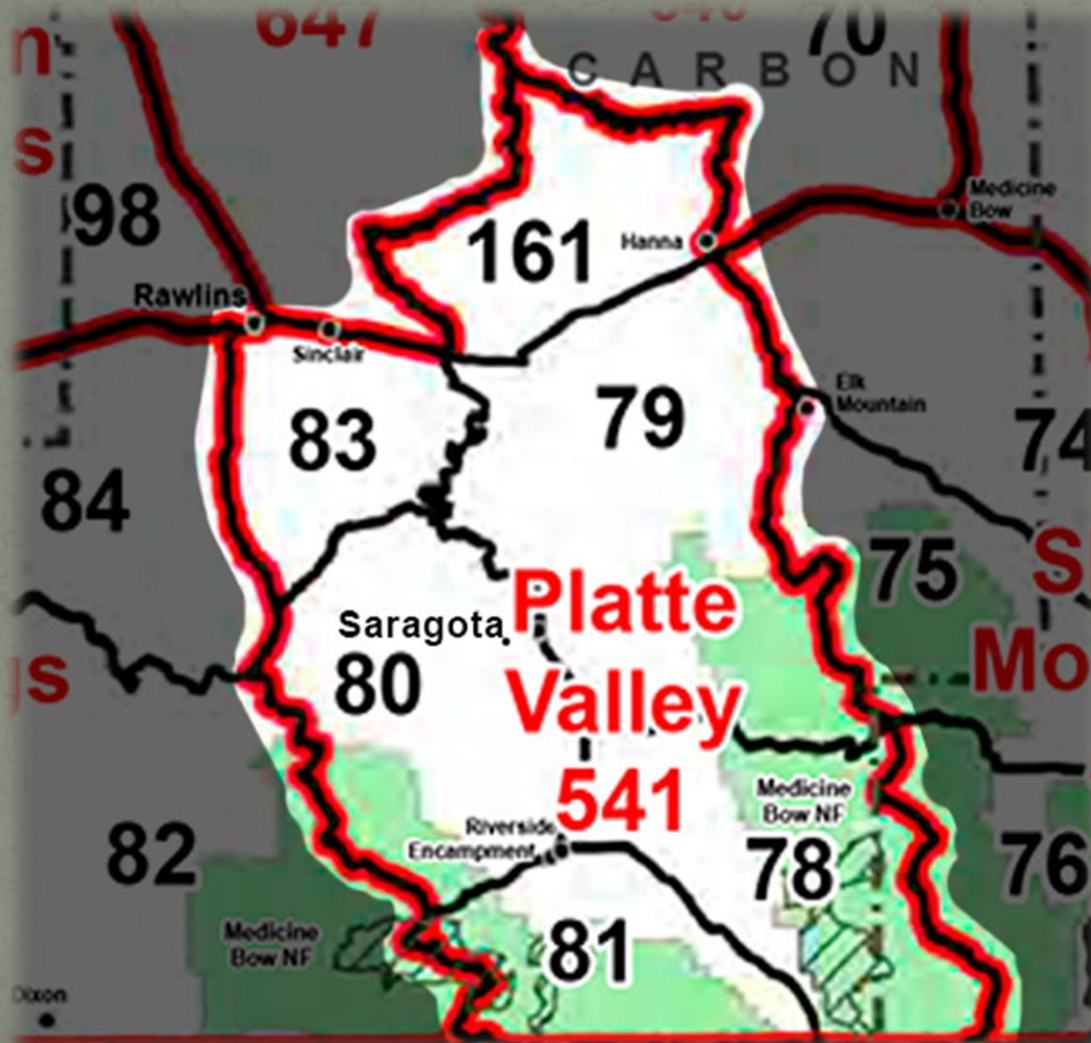
*“A collaborative process to improve the
management of mule deer and their habitat.”*

2019



The Platte Valley Mule Deer Herd Unit

Deer Hunt Areas 78-81, 83, & 161



Platte Valley Mule Deer Initiative

The Platte Valley Mule Deer Plan of 2012 was developed from the conversations with stakeholders in those initial meetings.

The “**Plan**” consists of 6 major components:

- I. *Population Management*
- II. *Habitat Management*
- III. *Predator Management*
- IV. *Access*
- V. *Disturbance*
- VI. *Outreach*

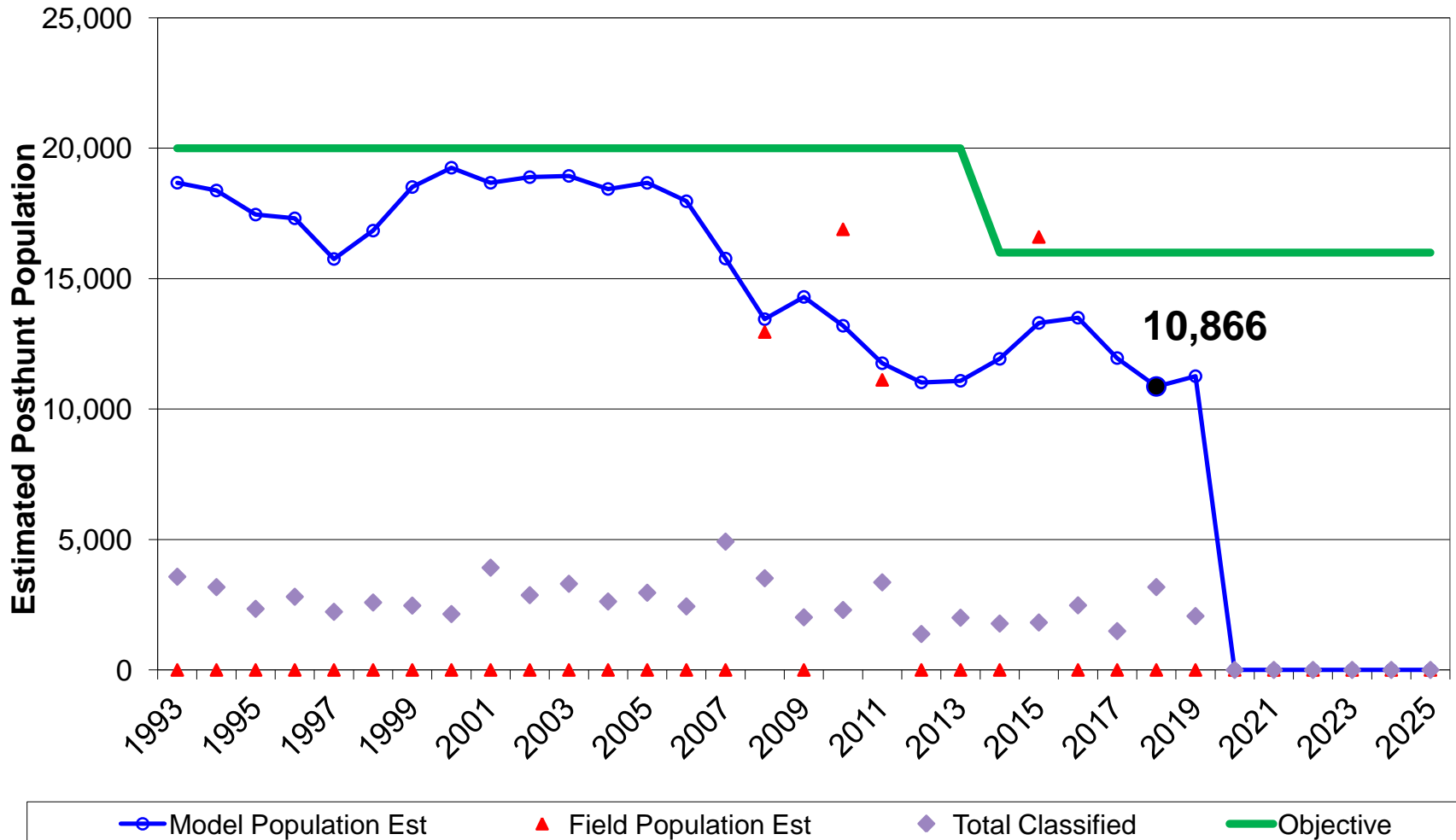


I. Population Management

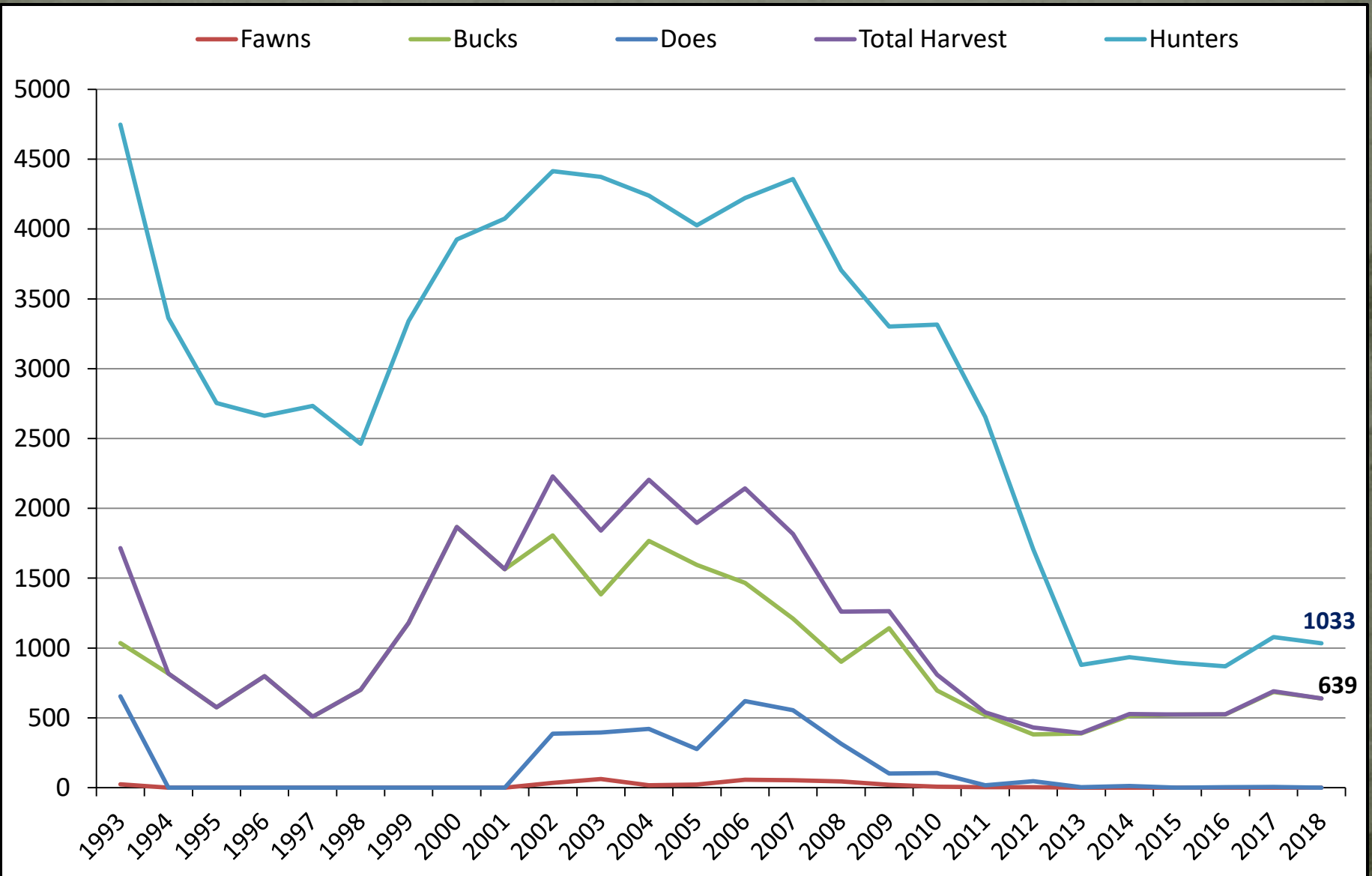


I. Population Management

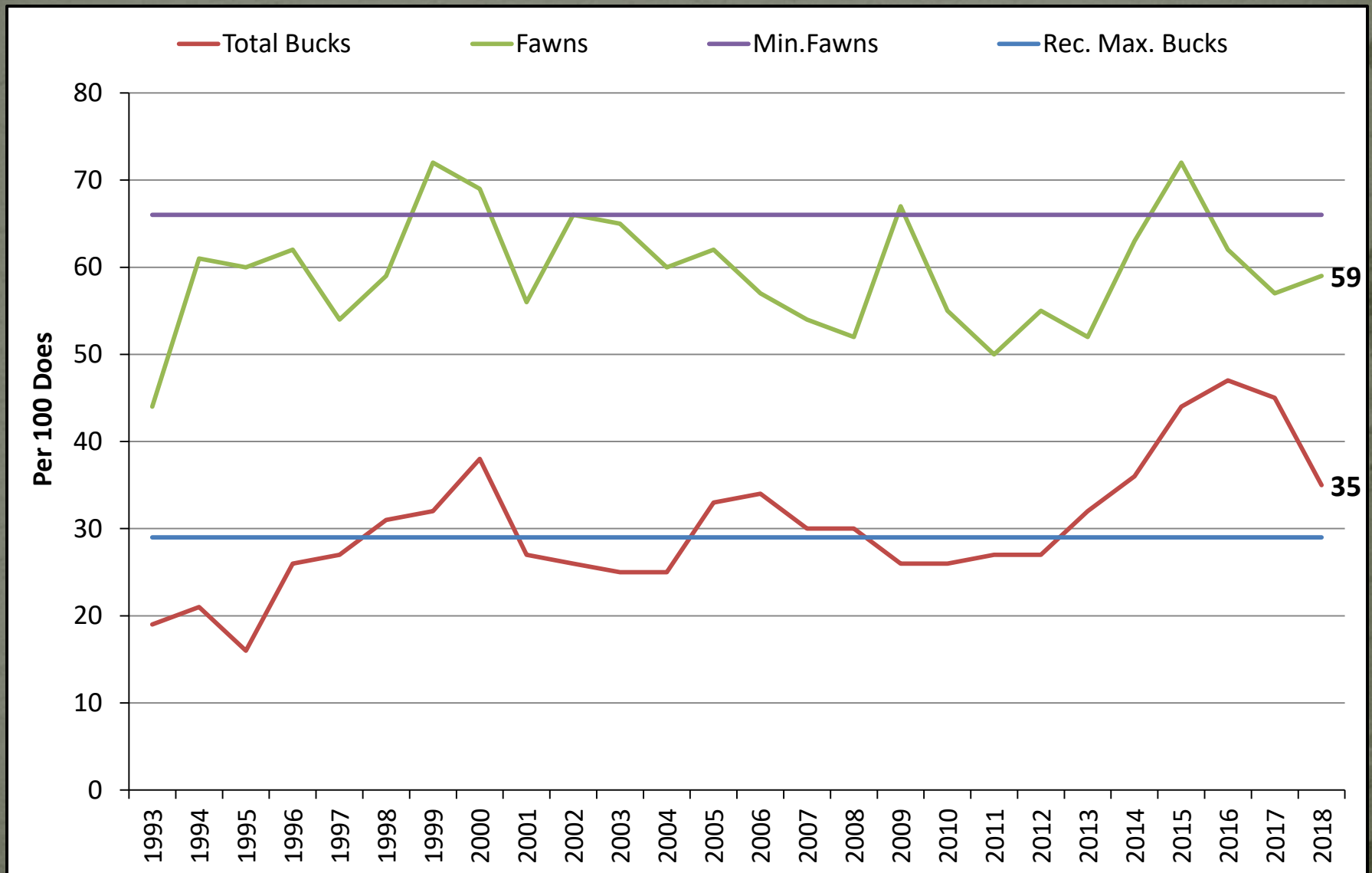
Posthunt Population Estimate



I. Population Management



I. Population Management



I. Population Management

Secondary Objectives from the *Plan* to address the “Quality of the Hunt” concerns:

1) Field checked bucks ≥ 24 " = **20% of sample**

% of Field Checked Buck Harvest			
Year	Sample	Yr. Buck	≥ 24 "
2018	166	12%	30%



2) Hunter Satisfaction **Goal $\geq 60\%$**

WGFD Harvest Survey	
Year	"Satisfied" or "Very Satisfied"
2012	46%
2013	57%
2014	62%
2015	74%
2016	74%
2017	77%
2018	75%

I. Population Management

Secondary Objectives from the *Plan* to address the “Quality of the Hunt” concerns

3) Buck Harvest Success *Goal* $\geq 40\%$



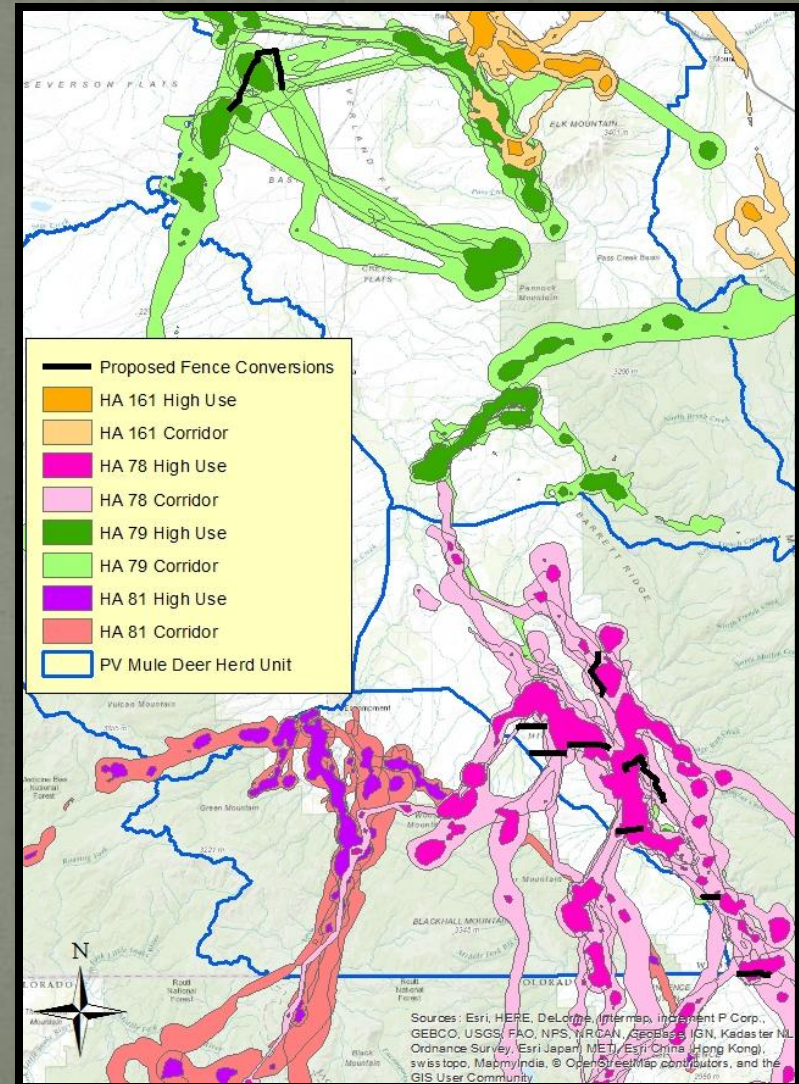
Buck Harvest Success	
Year	
2009	35%
2010	21%
2011	20%
2012	22%
2013	44%
2014	55%
2015	59%
2016	61%
2017	64%
2018	62%

II. Habitat Management

- **2012:** Platte Valley Habitat Partnership
 - Establish effective partnership to improve mule deer habitat
 - \$500,000 allocation from the WGFC
- **2013:** Finalized habitat plan, project development
- **2014-2019:** Project implementation, continue project development and funding applications
- **Future:**
 - Continue implementation on approved projects
 - Create large-scale, multi-year, cross-landownership (including CO) proposals
 - Use mule deer collar data to prioritize projects

Strategic Habitat Plans available on GF Website:

<https://wgfd.wyo.gov/Habitat/Habitat-Plans/Strategic-Habitat-Plan-Annual-Reports>



III. Predator Management

• Trophy Game



Continue to have liberal mountain lion hunting seasons:

- Open year round
- Reduced price mountain lion license

Mountain Lion Regulations will be reviewed in 2019.

The Large Carnivore Section conducted a 9-week black bear population study in the Sierra Madre Range in 2018. The primary objective of the study was to obtain a population abundance and density estimates of black bear hunt area 9. Results of this study will be used to evaluate current black bear management strategies.

Bear Regulations will be reviewed in 2020.



III. Predator Management

- Predatory Animals



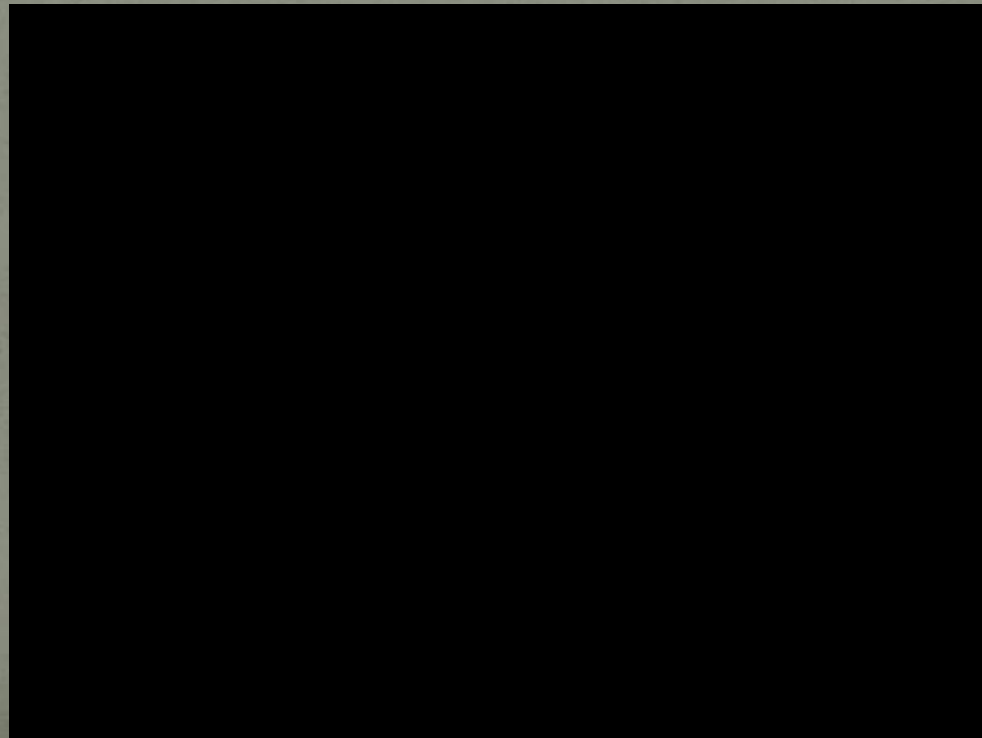
IV. Access

- Continue to seek opportunities for easements across private land to access public land.
- Continue to look for opportunities for Access Yes Program enrollment in the Platte Valley.



V. Disturbance

- Winter Range Task Forces
- Antler Hunting Regulations
- Continue to work with USFS and BLM on Travel Management recommendations



VI. Outreach

- SERCD PV Volunteer Fence/Spray Day
- Verbal MDI updates at check stations and during field contacts
- MDI Update Meetings
- Migration Forum

