



# Migration Risk Assessment

---

Platte Valley Migration Forum  
February 27th, 2019



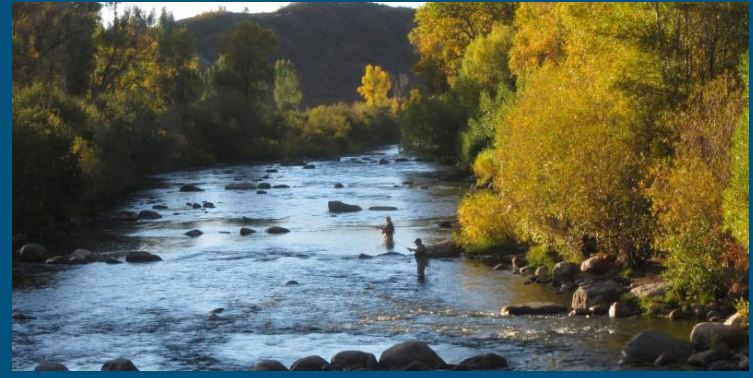
# WGFD Migration Corridor Strategy

---

## **Action 1** - Update the Wyoming Game & Fish Commission Mitigation Policy

- Designate migration stopover areas and bottlenecks as “Vital Habitat.”

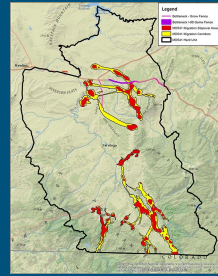
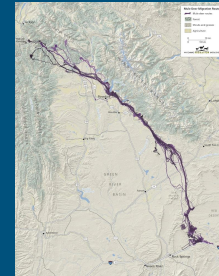
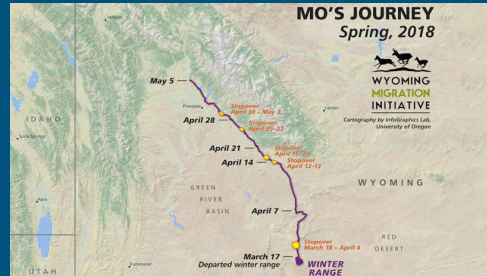
**Vital Habitat**: habitats that directly limit a wildlife community, population, or or subpopulation, and restoration or replacement may not be plausible



# WGFD Migration Corridor Strategy

## Action 2 - Designate migration corridors

- Repeated Observations
  - VHF collar data
  - Tracks and/or other field observations recorded over many years (WOS database)
- Historical records
- GPS collar locations
  - Fine -scale habitat features such as high-, moderate-, low-use migration corridors, stopover areas, and bottleneck can only be designated using this method.



# WGFD Migration Corridor Strategy

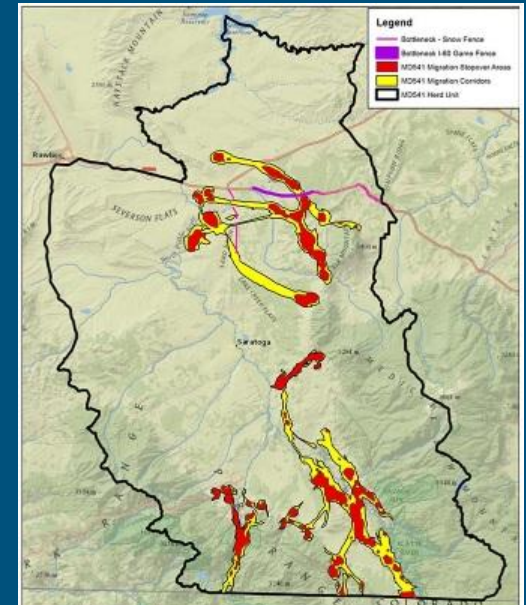
**Action 3** - Risk Assessments, research, and proactive actions to conserve migration corridors

- Conduct a risk assessment for each designated corridor
- Engage stakeholders to review existing information and collect additional data
- Continue to work with WMI and our research partners to enhance our understanding of migration
- Work with stakeholders to identify related research and proactive conservation actions

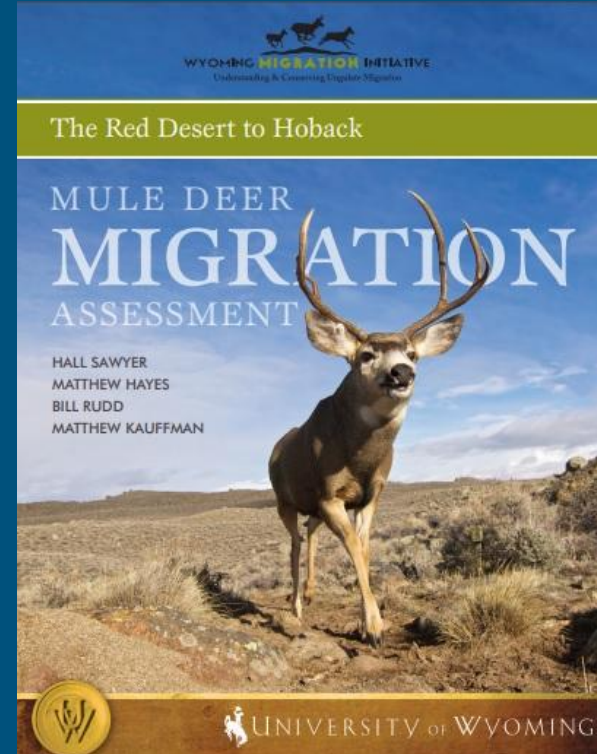
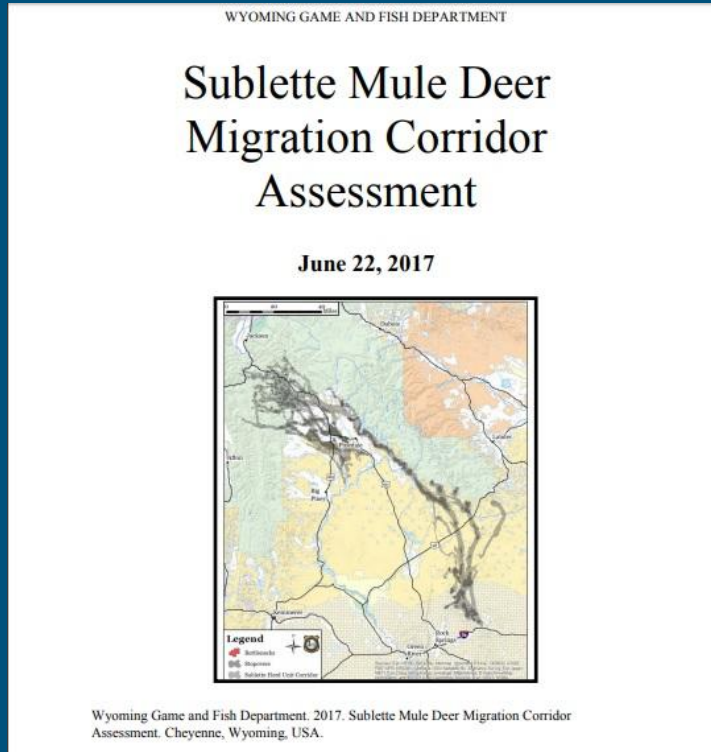


# Migration Risk Assessment

- Analysis of existing and potential threats
  - Work with stakeholder to review existing information & collect additional data
  - GIS analysis of existing data layers
- Engage with stakeholders:
  - Identify research needs
  - Determine appropriate management actions
  - Explore opportunities for proactive conservation

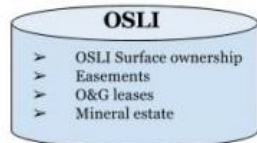
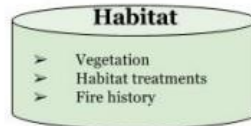
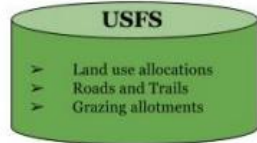


# Sublette Mule Deer Migration Corridor Assessment



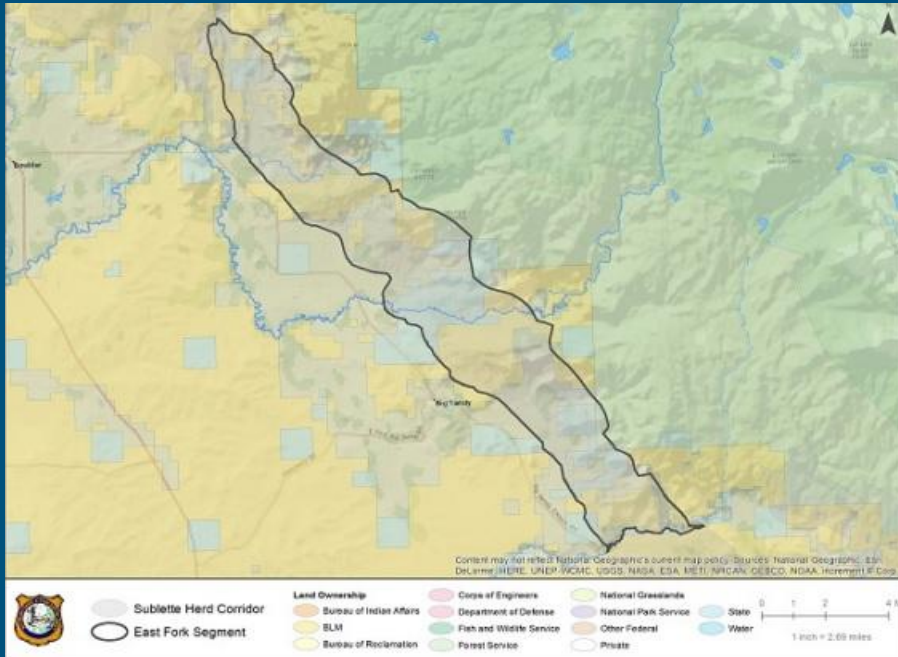
# GIS Analysis of Existing Data Layers

## Migration Corridor Assessment Data Layers

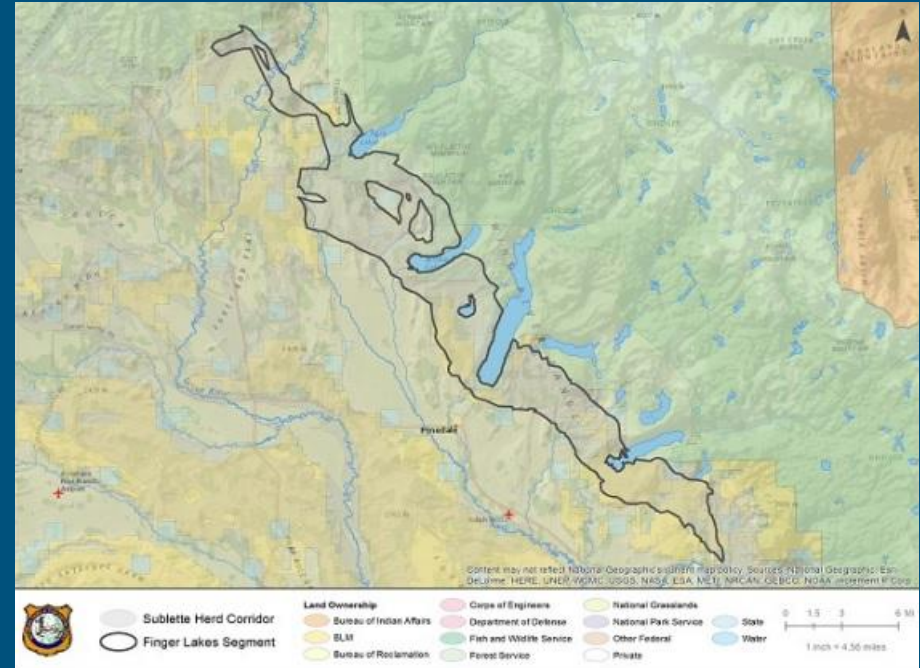


# Land Ownership

- Overview of potential land use and management issues with corridor segment



East Fork Segment

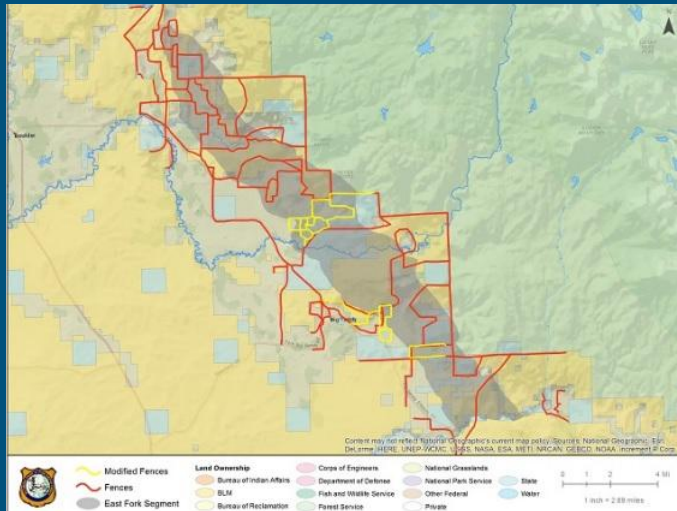


Finger Lakes Segment

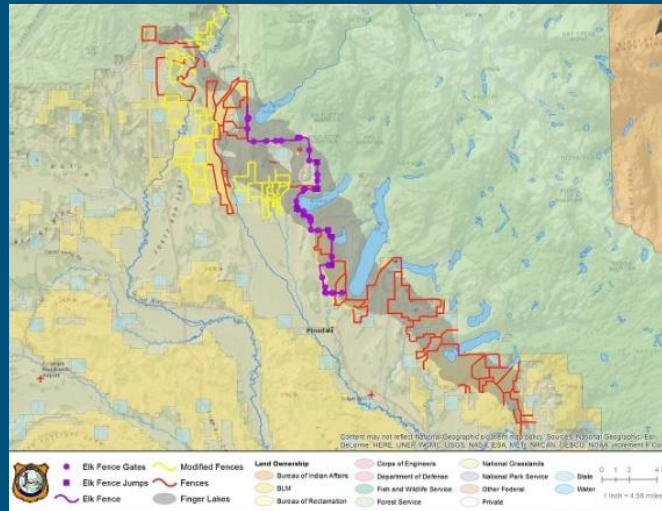


# Physical Barriers

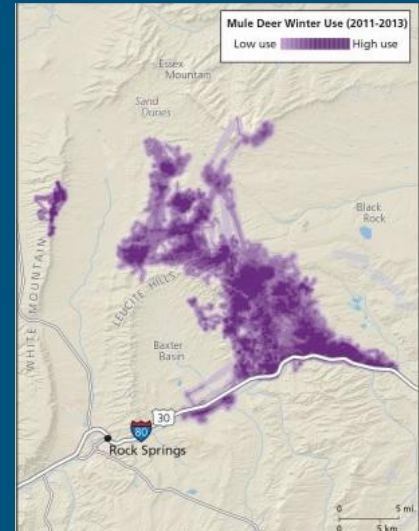
- Existing barriers and impediments to migration
  - Hazardous fences, wildlife fences, snow fences, roads



East Fork Segment  
Fences/Modified Fences



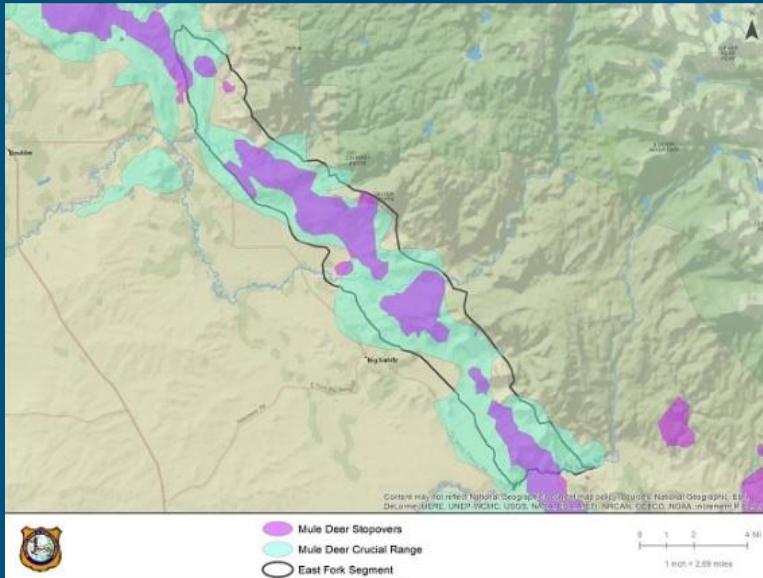
Finger Lakes Segment  
Fences/Modifications/Elk Fence



Winter distribution of mule deer & I-80

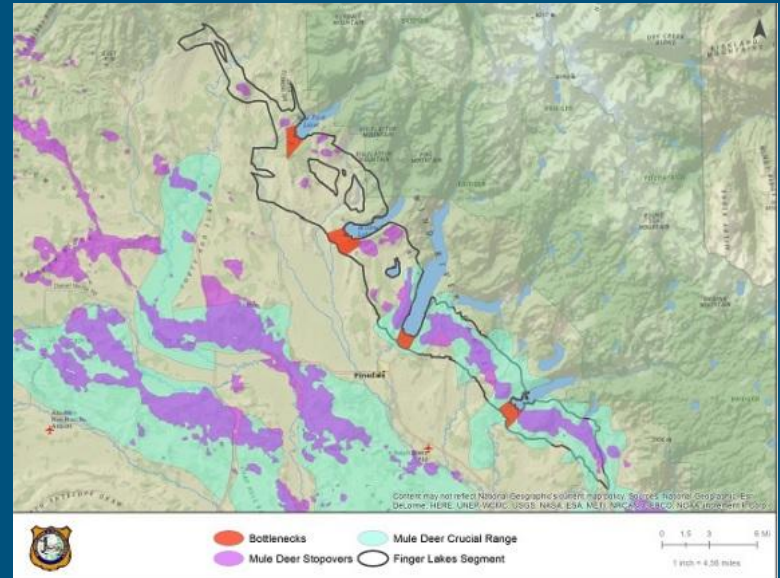
# Wildlife Use

- Previously designated mule deer crucial range
  - Finger Lakes segment illustrates bottlenecks



East Fork Segment

Corridor/stopovers match previously designated crucial range

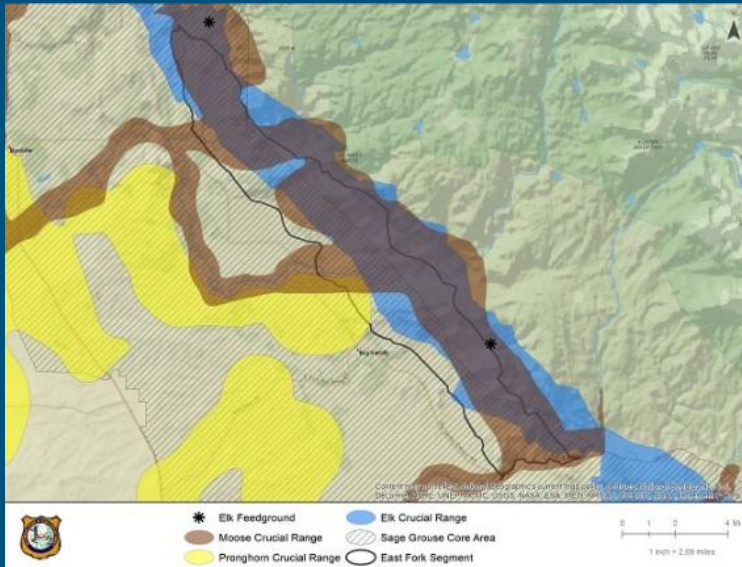


Finger Lakes Segment

Crucial range and stopovers outside of corridor

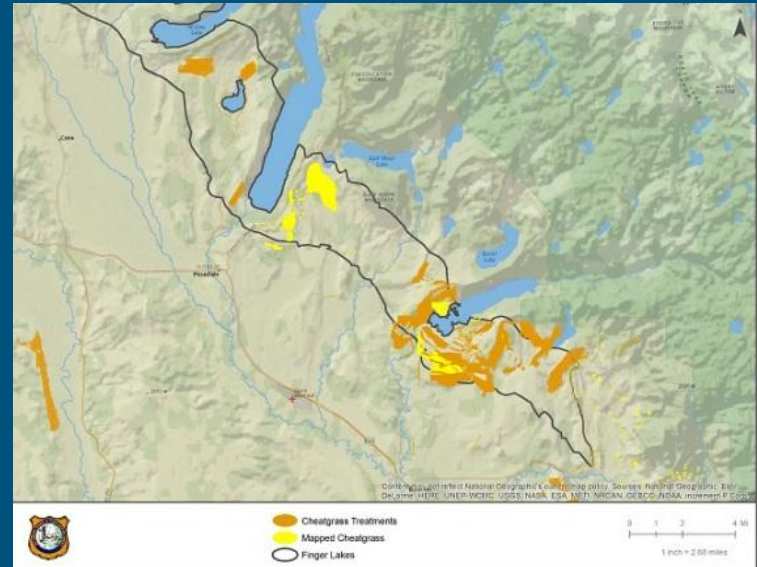
# Wildlife Use & Habitat Treatments

- Other wildlife crucial ranges and sage grouse core areas
  - Associated protections or other threats
- Habitat Treatments - what has been done and how to prioritize future treatments



East Fork Segment

Other Wildlife Crucial ranges and Sage Grouse Core Area

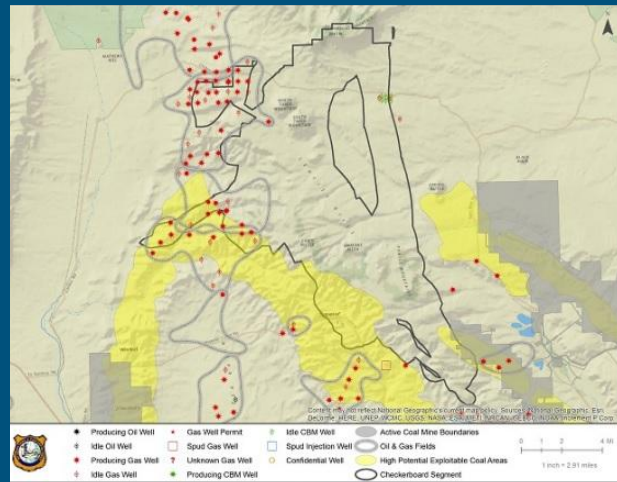


Finger Lakes Segment

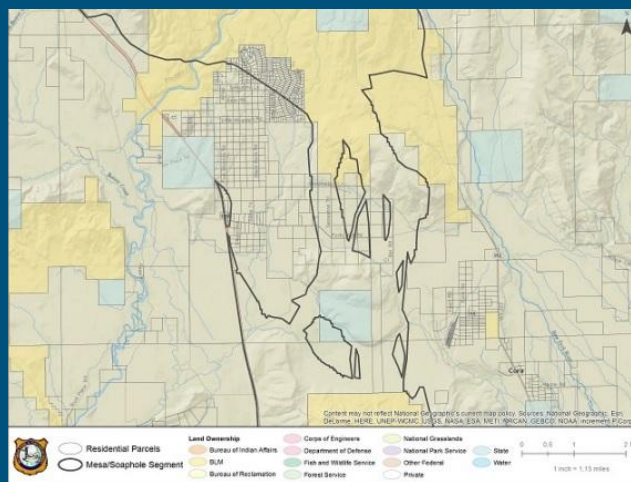
Mapped & treated cheatgrass areas

# Land Use

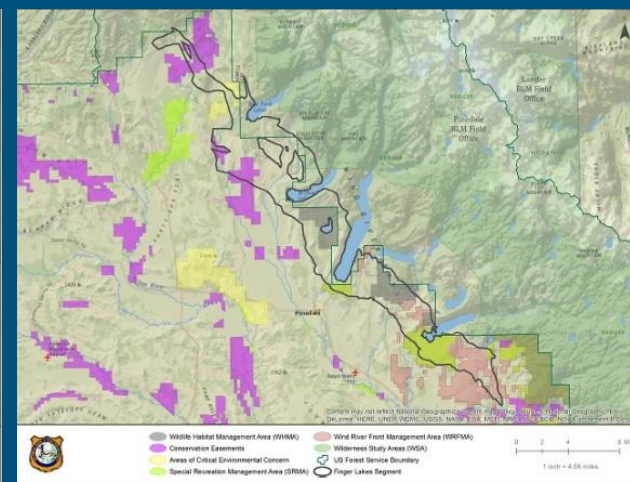
- Development (mineral/energy, urban/rural zoning & planning)
- Designated Management Areas (WSAs, NSO, Conservation Easements, WHMAs, etc)



Checkerboard Segment  
Mineral Development



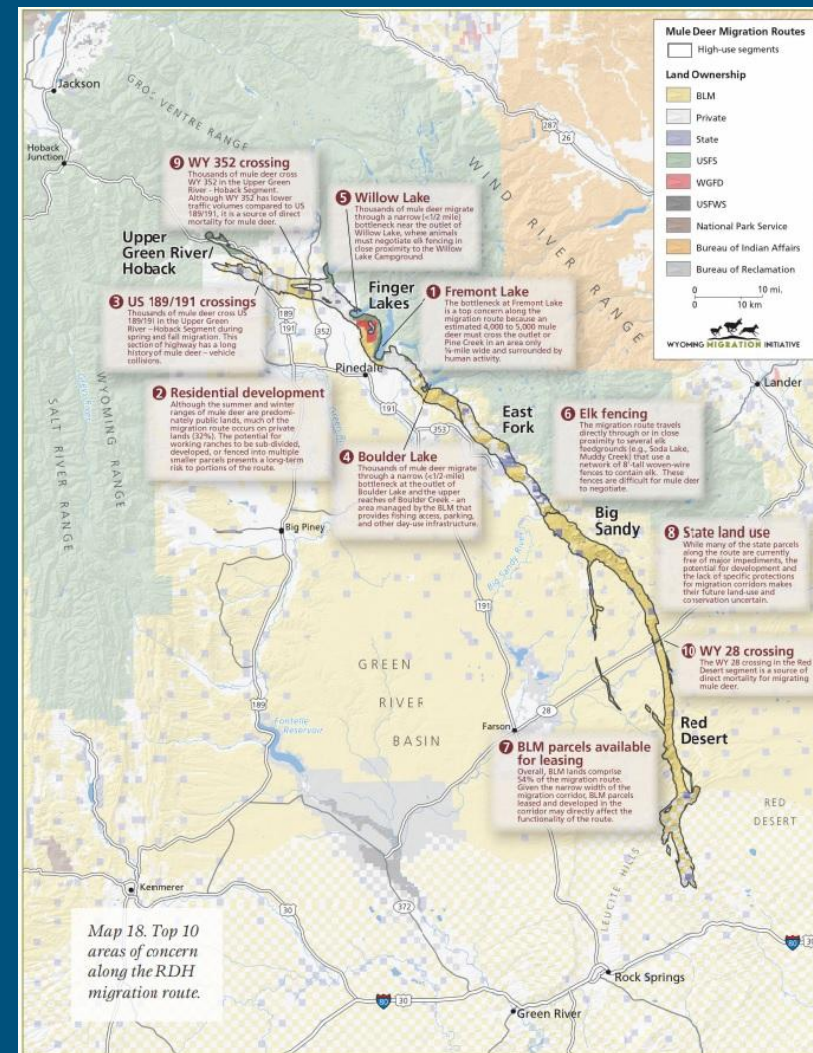
Mesa/Soaphole Segment  
Residential Ownership



Finger Lakes Segment  
Designated Management  
Areas

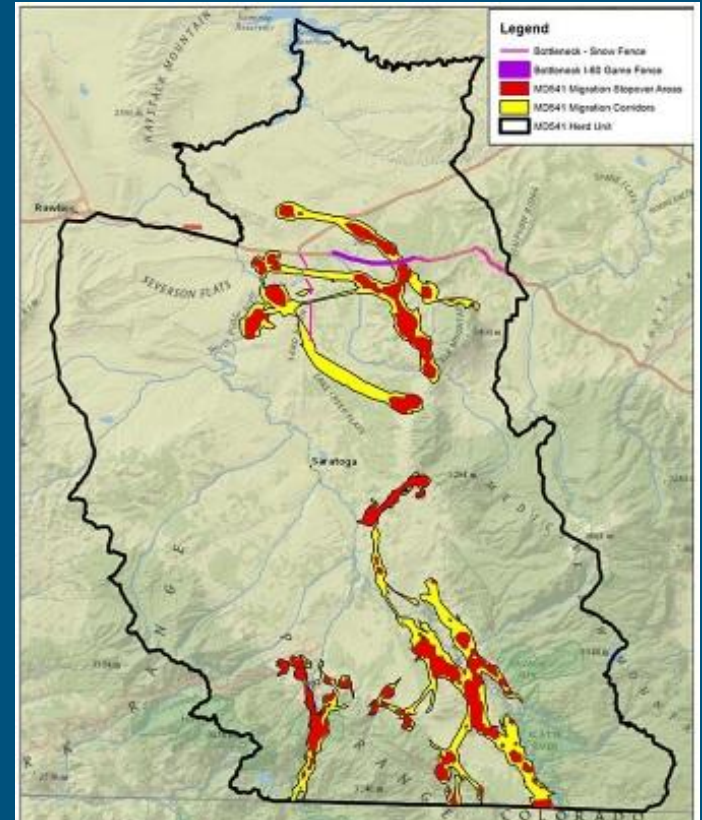
# Priority areas of concern

- Use analyses and stakeholder input to come up with priority area of concern
- Use analyses and areas of concern to form management considerations
  - Reduce road barriers
  - Fence modifications
  - Zoning and planning recommendations
  - Potential land exchanges
  - Habitat improvement projects
  - Recommendations for federal land use plans
  - Outreach and education



# Platte Valley Mule Deer Migration Corridor

- Land Ownership
  - Different land management
  - Cross boundary management (also WY/CO)
- Physical Barriers
  - Roads, snow fences, hazardous fence, elk fence
- Wildlife Use
  - Other big game and sage grouse
  - Existing protections
- Habitat Treatments & Impacts
  - Previous habitat treatments
  - Invasive weed presence and potential
  - Wildfire
- Land Use
  - Mineral/energy development and potential
  - Urban/rural development
  - Designated management areas (WSAs, WHMAs, etc)



# Platte Valley Priority Areas of Concern

## Today:

- Stakeholder input on risks we should analyze for the Platte Valley

## Next Steps:

- Complete GIS analysis and Risk Assessment
- Bring Assessment back to public/stakeholders
  - Gather input on prioritizing areas of concern
  - Identify research needs
  - Explore opportunities for proactive conservation
- Determine appropriate management actions

