



# Science of migration



Embere Hall  
Wildlife Coordinator - Laramie Region  
Wyoming Game & Fish Department



T. Johnson



National Geographic



J.Riis

# Why migrate



# Platte Valley mule deer migration

Mostly migratory

Winter: Platte Valley

Summer: Sierra Madres, North Park, Snowies,  
north towards I-80

6,400-12,00 ft



# 2011-2013

Captured on winter range

55 does; GPS collars

Locations every 3 hrs



15 bucks; VHF collars

Opportunistic locations

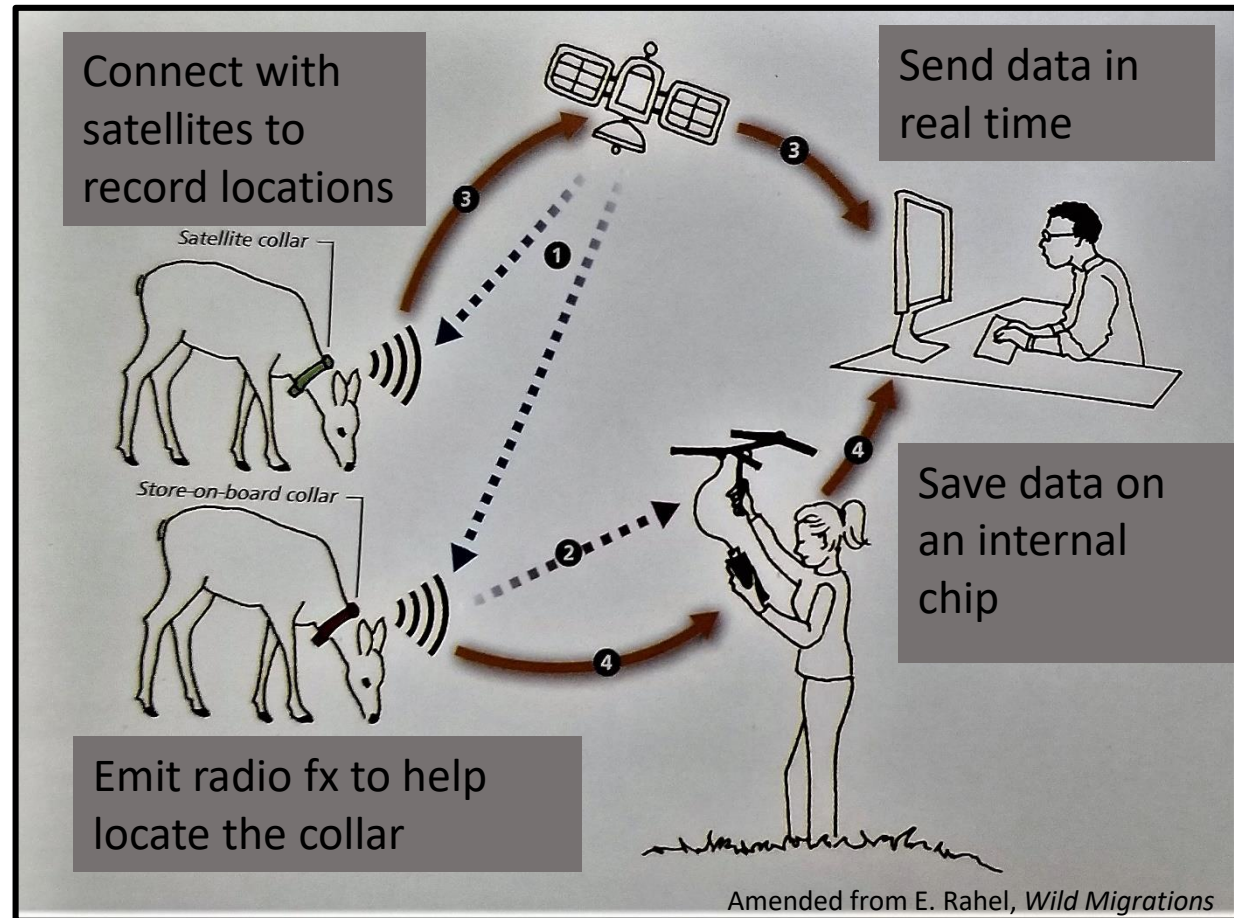


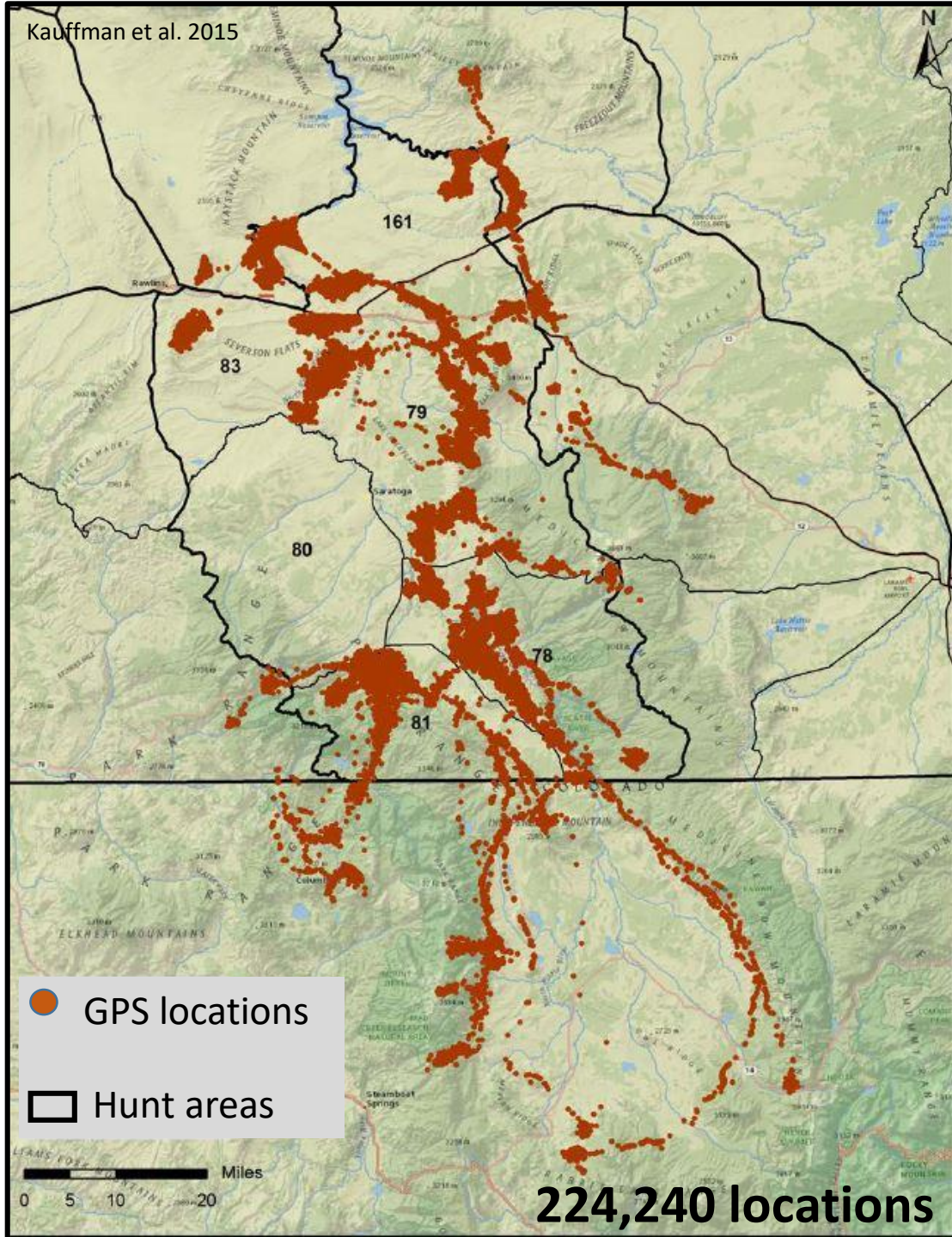


# GPS collars



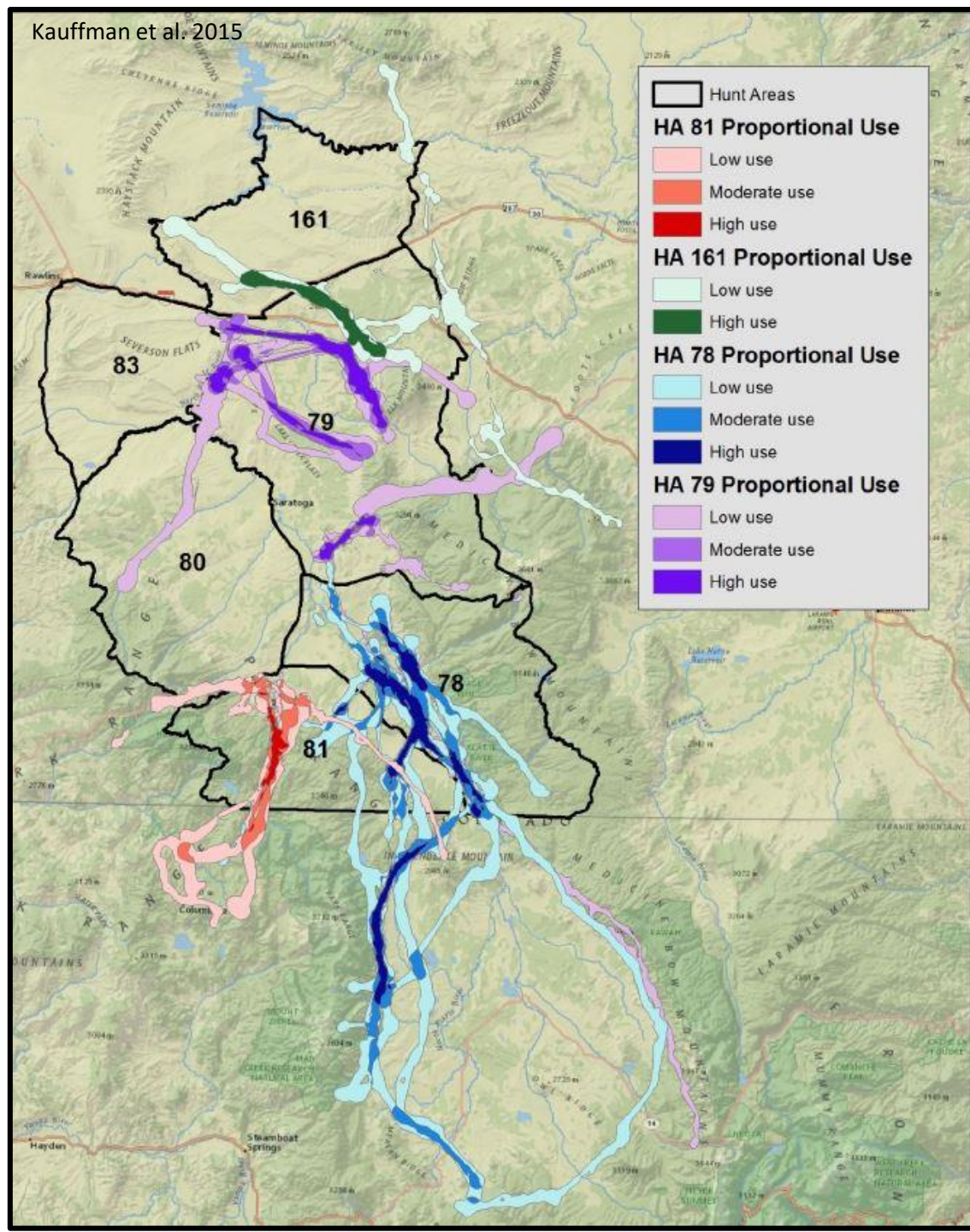
A. May





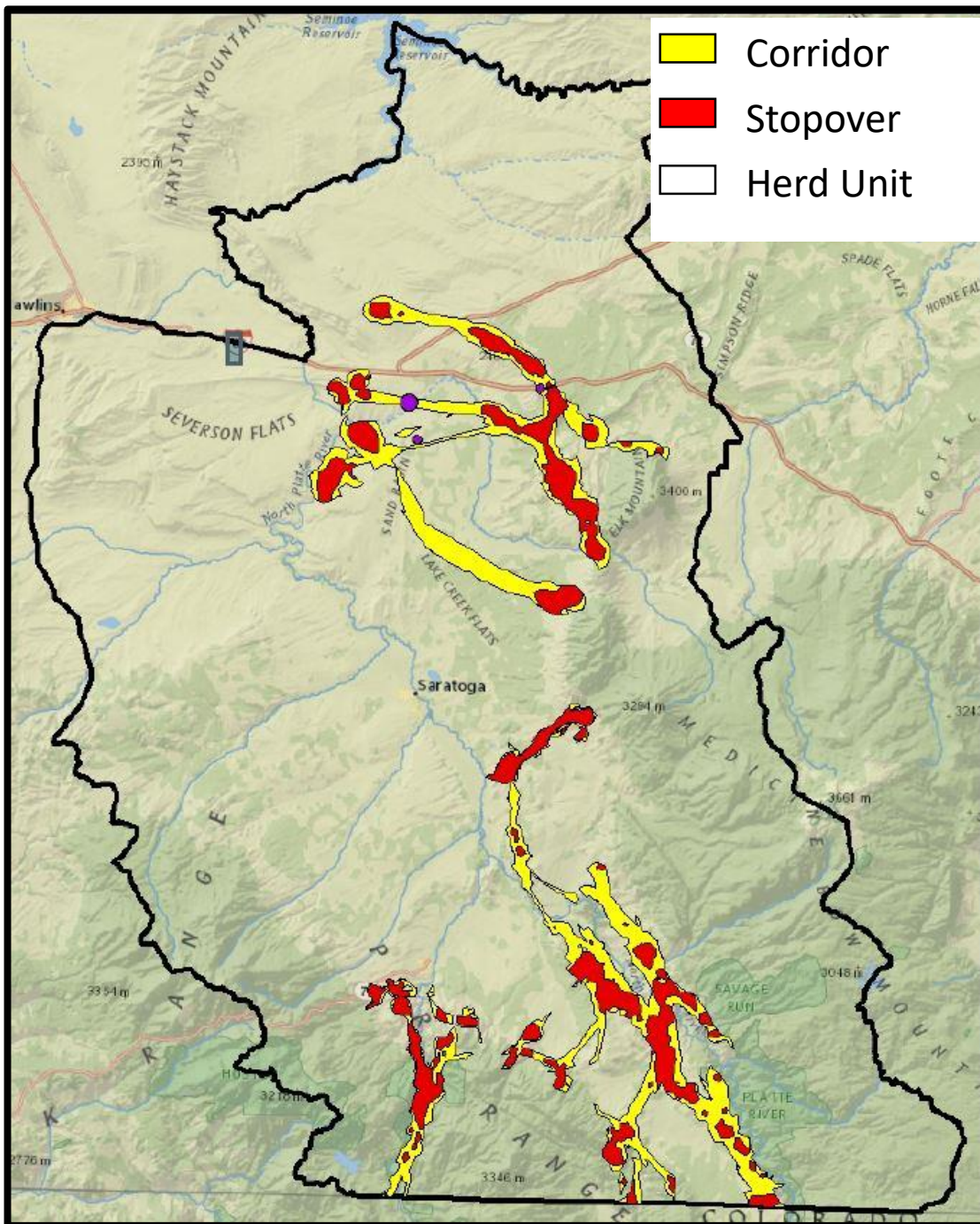
● GPS locations  
□ Hunt areas

224,240 locations





# Designated corridor



**Proposed**  
Research & statewide Dept.  
guidelines

## Public Review

- News releases to 4,000 addresses and media outlets
- Proposal posted online
- >80 stakeholders, including individuals, federal partners and Conservation District

## Designated 2018

3 designated corridors  
statewide

# Next steps....

