



## NEW WORLD SCREWWORM (NWS) INFORMATION FOR HUNTERS/PUBLIC

### BACKGROUND?

- There have been recent detections of New World Screwworm (NWS) in Texas and New Mexico (June 2026)
- Prior to eradication from the US in the 1960s, NWS was a substantial cause of morbidity and mortality in wildlife in the South
- While the establishment of NWS in WY is unlikely, isolated outbreaks could occur through the movement of infested animals

### WHAT ARE NEW WORLD SCREWWORMS?

- NWS are parasitic flies that lay eggs in open wounds or mucous membranes of live, warm-blooded animals
- Eggs hatch into a parasitic larvae that burrow or 'screw' into living tissue
- Infested wounds quickly become infected and can lead to death
- NWS may linger, for several days after an animal dies, to finish feeding cycle (5-7 days total)
- NWS affects livestock, pets, wildlife, and less commonly, people and birds
- Adult flies are similar in size to a housefly

### COMMON WILDLIFE SPECIES AFFECTED?

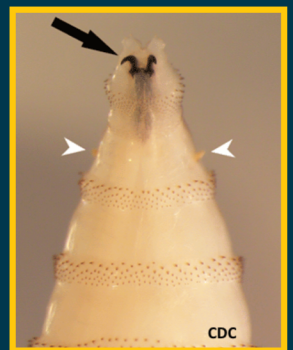
- Deer, rabbits, small mammals, birds (rarely)

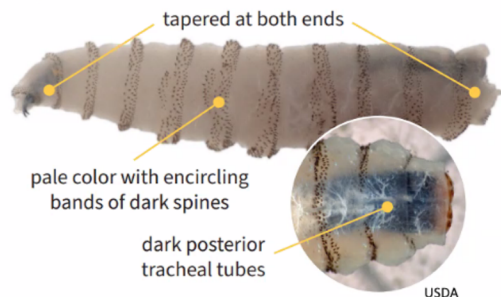
### COMMON AREAS OF INFESTATION?

- Common areas of infestation: umbilical cords, eyes, ears, nose, mouth, genitalia, cuts, scrapes, tick bites, velvet/antler shedding

### WHAT TO LOOK FOR IN WILDLIFE?

- Maggot/larvae-infested wounds in living animals
- Wounds, with deep pockets, and vertically buried maggots
- Foul smelling, open wounds
- Not all larvae (maggots) are NWS:
  - Non-NWS larvae are found with normal carcass decomposition (dead tissue)
  - Nasal botfly larvae are normally present in the back of the throat in some species (not burrowed into tissue)





## NEW WORLD SCREWORM (NWS)

### WHAT CAN YOU DO?

- Immediately report suspected cases of NWS in living or harvested animals to the appropriate agency for further direction (see below)
- Hunters/public can help monitor wildlife through game cameras and while scouting, hunting, recreating or observing wildlife on your property
- Hunters are encouraged to check harvested animals for wounds containing potential NWS larvae
- If you suspect a NWS infestation in live wildlife, please collect a geographic coordinate of the sighting along with photos or videos, if possible. Promptly contact your local WGFD wildlife biologist/game warden or Wildlife Health Lab for further guidance and to share any information
- If you suspect NWS larvae on your harvested animal, please collect a geographic coordinate of the harvest location, if possible, remove the entire infected area from carcass, double bag, freeze, and transport to your nearest WGFD office or employee



Online Reporting



**Direct Wildlife Concerns:**  
Wyoming Game and Fish Department  
Wildlife Health Laboratory  
wgf-lab-notifications@wyo.gov  
307-745-5865

**Direct Public Health Concerns:**  
For Public Health inquiries, not  
medical advice:  
State Public Health Veterinarian  
emily.curren@wyo.gov  
307-777-5825

**Direct Livestock Concerns:**  
Wyoming Livestock Board  
<https://wlsb.state.wy.us/public>  
lsbforms-applications@wyo.gov  
307-777-7515

For immediate assistance reach out to your regional WGFD office, biologist or game warden

### Additional resources for NWS can be found at:

- CDC About New World Screwworm  
<https://www.cdc.gov/new-world-screwworm/about/index.html>
- USDA-APHIS New World Screwworm  
<https://www.aphis.usda.gov/livestock-poultry-disease/cattle/ticks/screwworm>
- USDA-APHIS Info for hunters  
<https://www.aphis.usda.gov/sites/default/files/factsheet-nws-hunters-508.pdf>
- USDA-APHIS NWS Dashboard  
<https://www.aphis.usda.gov/animals/animal-health/livestock-and-poultry-disease/current-status/us-confirmed-cases-new-world>



WGFD Regional Contacts

