

# Middle Green River Access Map

Fontenelle to Flaming Gorge

- River Mile Posts
- Boat Ramps



## Private Land

The Middle Green River Access Map portrays 70+ miles of the Green River from Fontenelle to Flaming Gorge reservoirs. The river flows through both public and private lands, and it is the responsibility of the recreationist to know where they are in the area. It is legal to float through private land, but you must **stay in your boat at all times unless explicit permission has been obtained from the landowner. Trespassing includes anchoring and wading without landowner permission.**

## River Hazards

River hazards exist between river miles 67 and 70 (Map 8). We recommend **all recreationists should take out at the James Town Boat Ramp** located at river mile 65 in the Sweetwater County Park and **do not attempt to navigate over these hazards.** In addition, side channels may become impassable at low flows. Scout side channels in advance of attempting to float them.

## Roads

Roads depicted within this map vary from maintained, paved roads to unmaintained, primitive roads. Road conditions are dependent on time of season and weather.

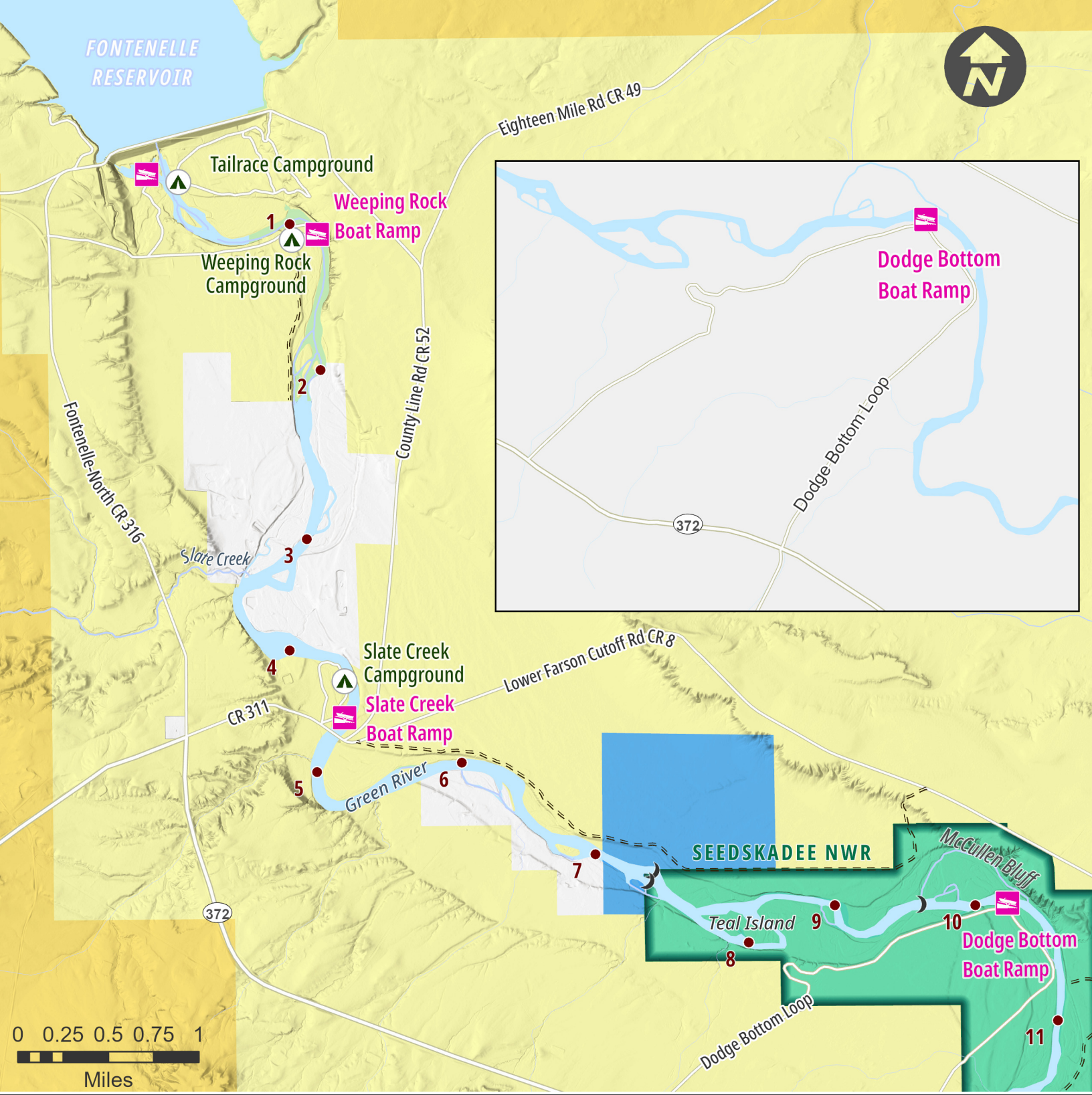
## Regulations

Multiple federal and state regulations govern general and outdoor recreational activities. For example, camping is prohibited within the Seedskafee National Wildlife Refuge and the Walk-In Area Sweetwater #3 boundaries. Please consult to the Seedskafee National Wildlife Refuge website for the full list of rules and policies (<https://www.fws.gov/refuge/seedskafee/visit-us/rules-policies>). The Green River has multiple exceptions to the Statewide Fishing Regulations. Visit the Wyoming Game and Fish Department website for complete hunting and fishing regulations and walk-in area rules (<https://wgfd.wyo.gov>).

## River Miles Between Boat Ramps

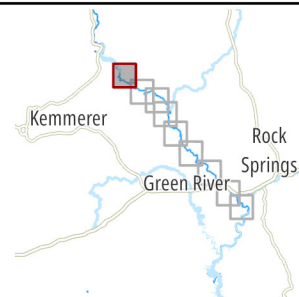
Fontenelle Dam to Weeping Rock .....	1.2
Weeping Rock to Slate Creek .....	3.5
Slate Creek to Dodge Bottom .....	5.5
Dodge Bottom to Hay Farm .....	7.3
Hay Farm to Highway 28 .....	8.8
Highway 28 to Six Mile .....	9.2
Six Mile to Blue Rim .....	26.4
Blue Rim to James Town .....	3.3
James Town to Expedition Island .....	4.3
Expedition Island to Stratton Meyer .....	2.4
Stratton Meyer to FMC Park .....	2.4

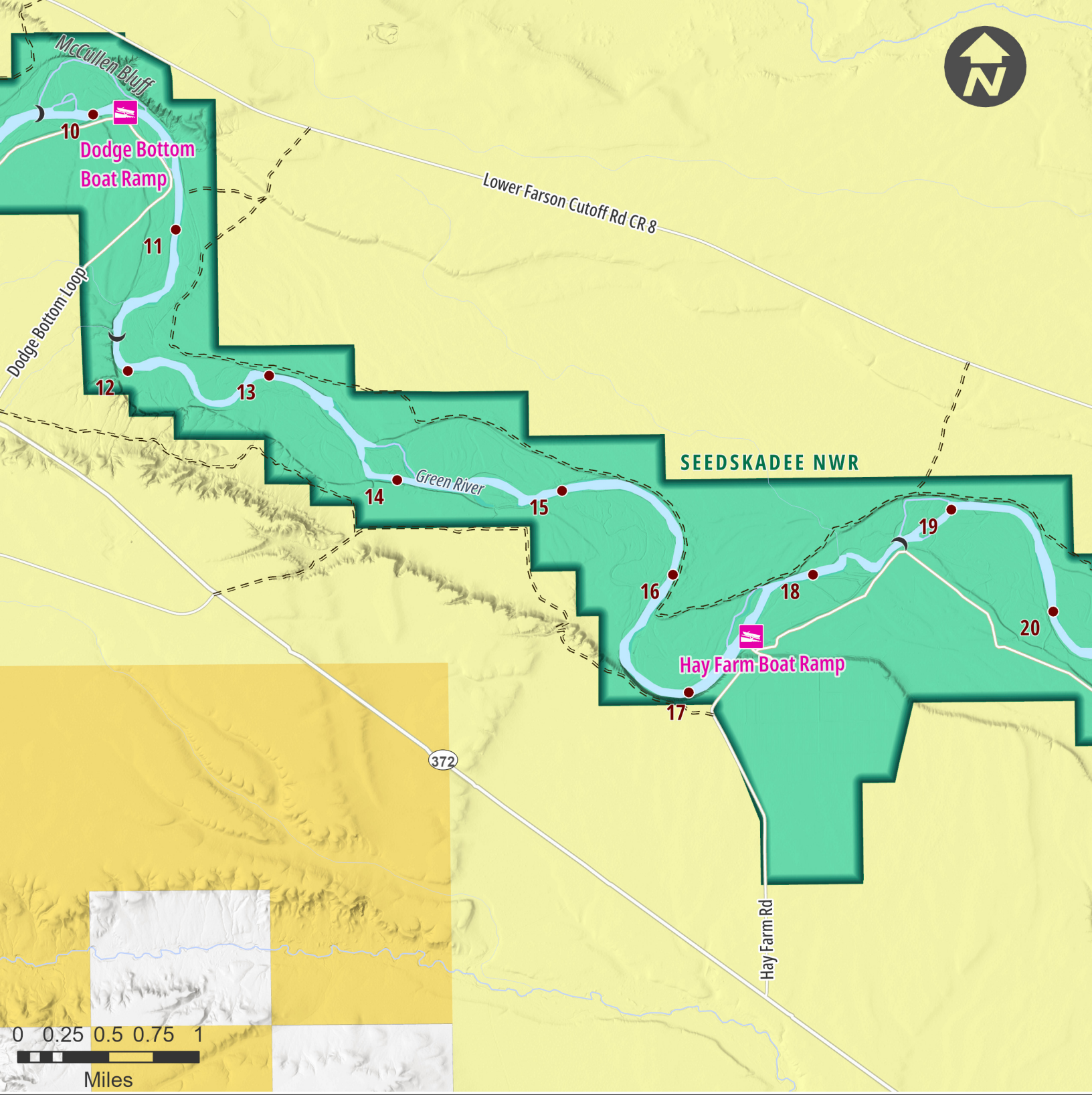




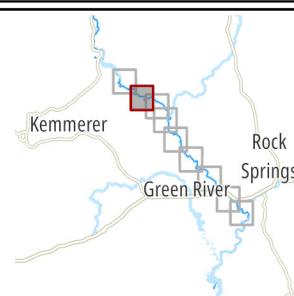
# Map 1

Miles 1 to 11





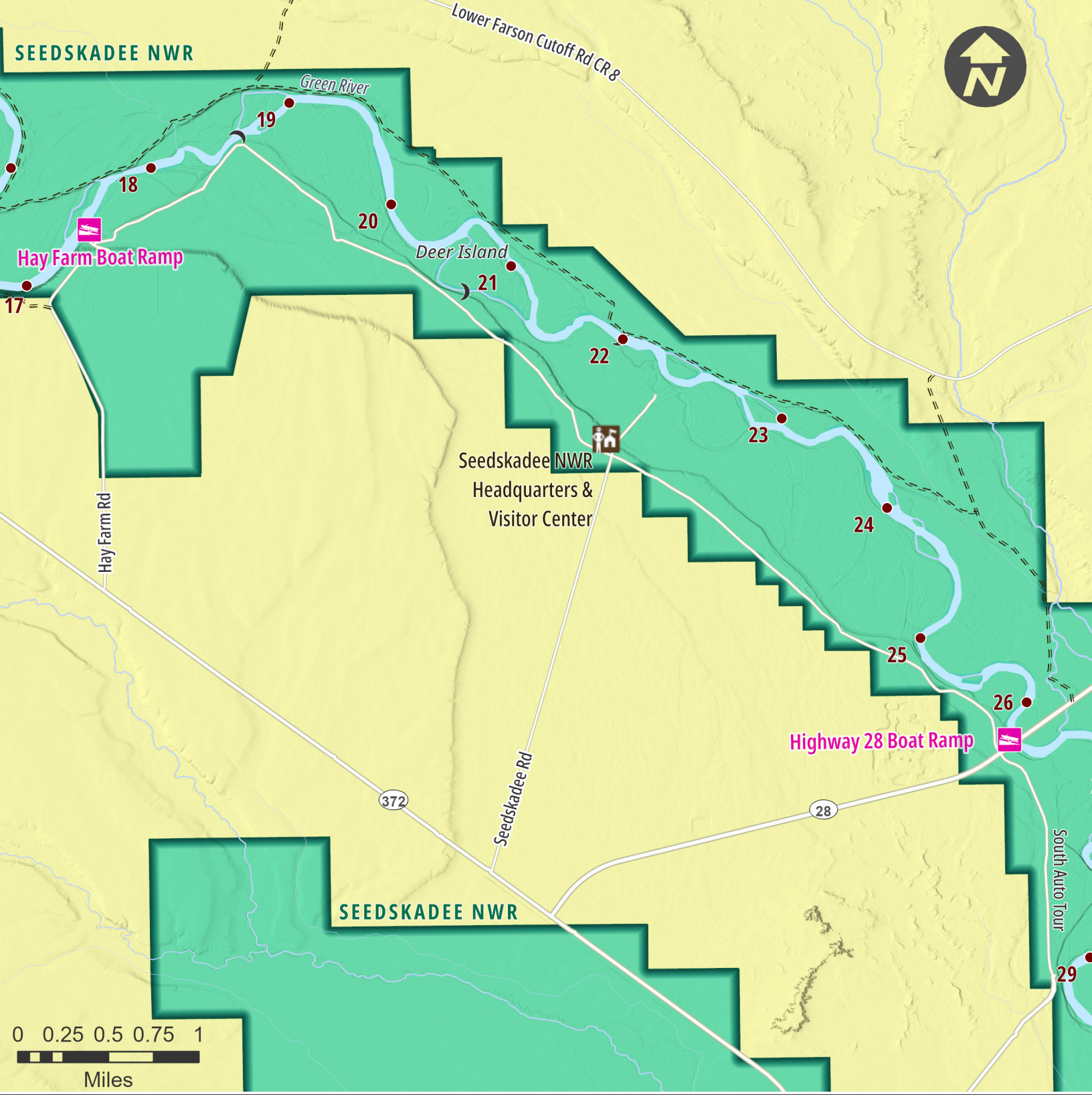
- River Mile
- Boat Ramp
- ▲ Campground
- )  Rock Sill
- Bureau of Land Management
- Bureau of Reclamation
- US Fish & Wildlife Service



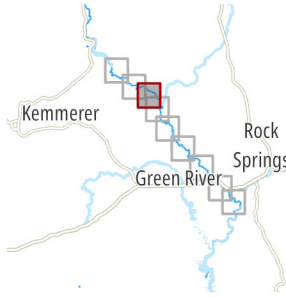
# Map 2

Miles 10 to 20





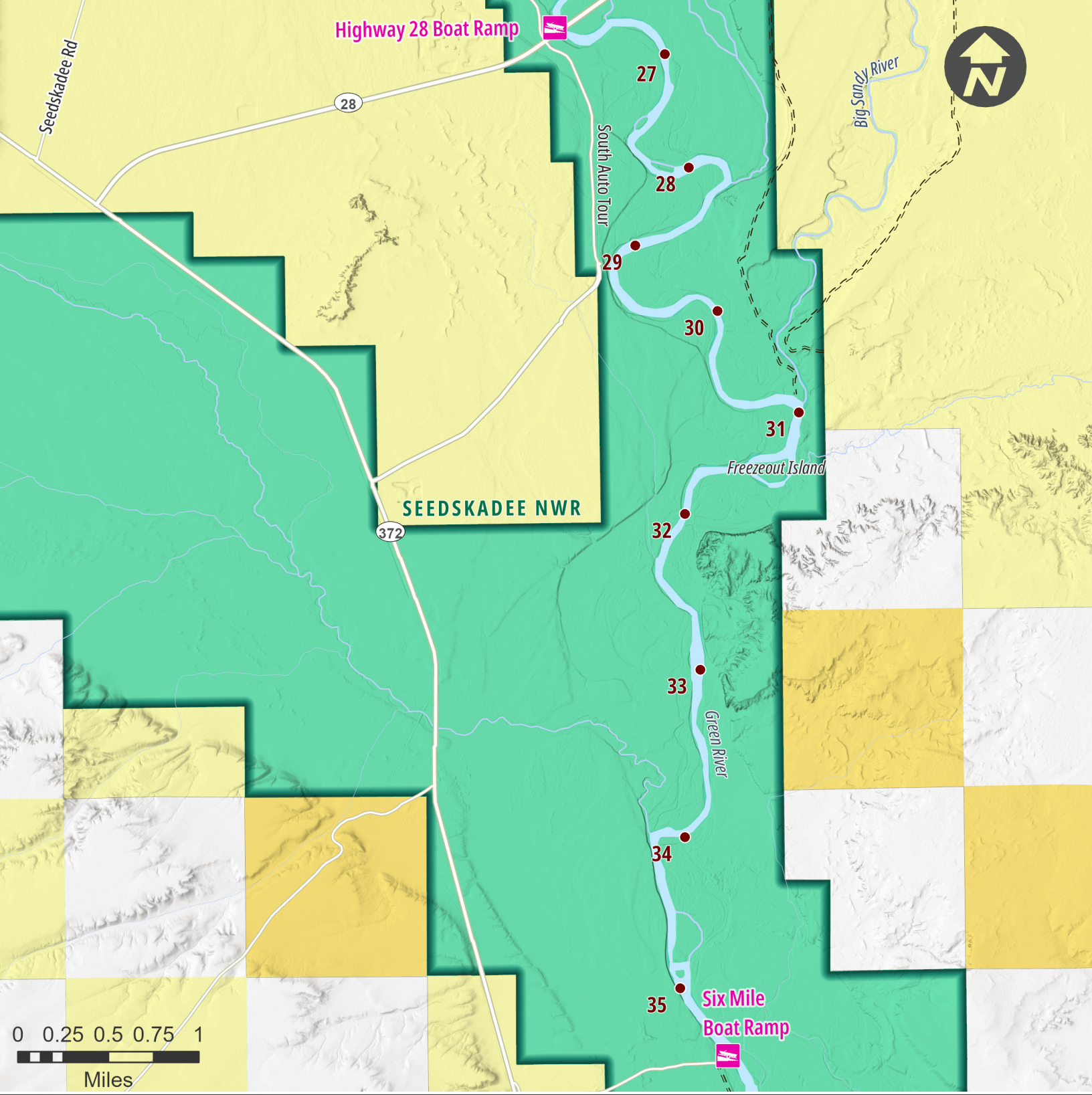
- River Mile
- Boat Ramp
- ▲ Campground
- ) Rock Sill
- Bureau of Reclamation
- US Fish & Wildlife Service



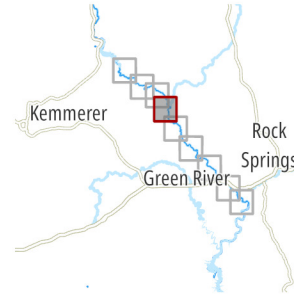
# Map 3

Miles 17 to 29





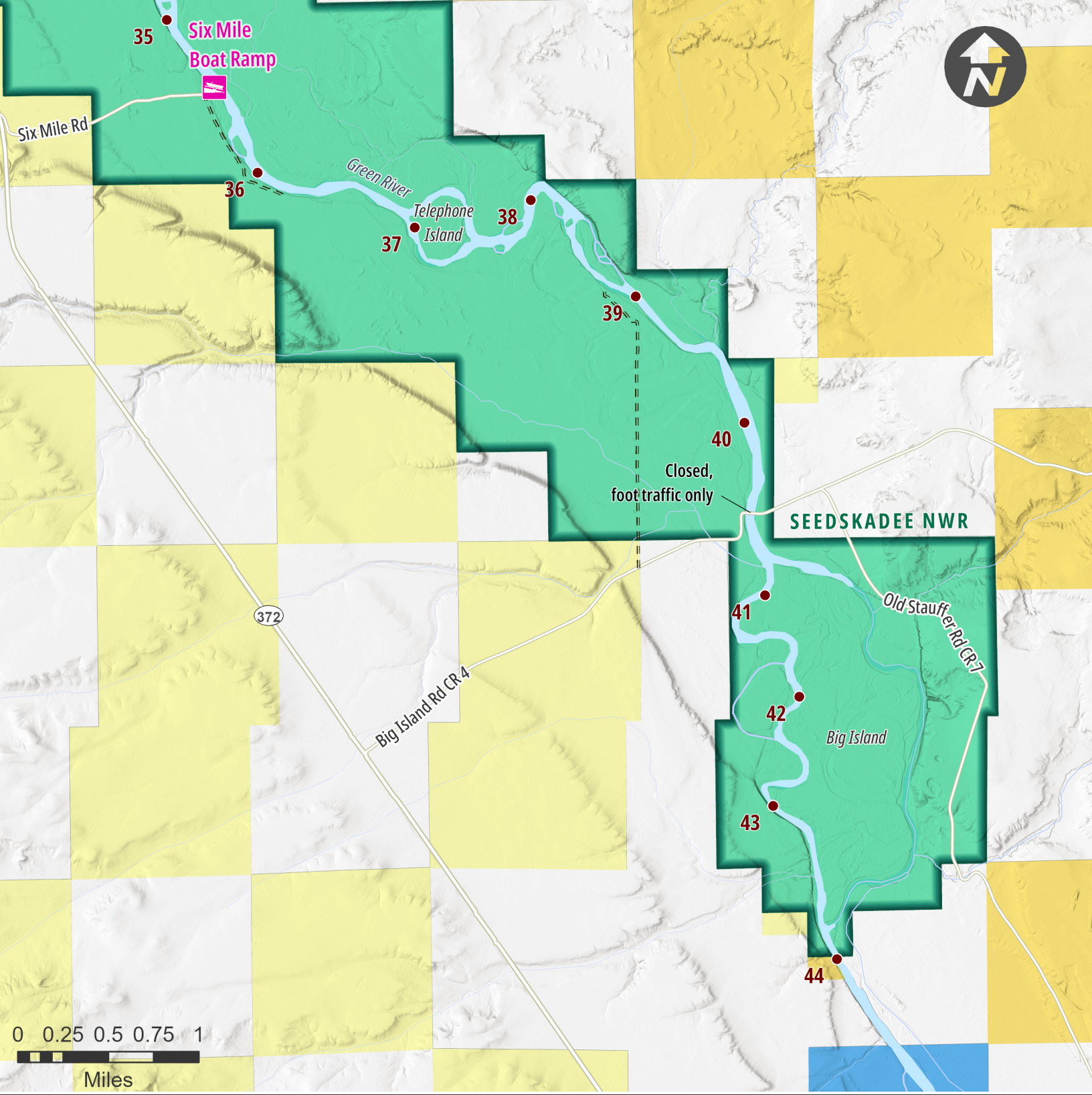
- River Mile
- Boat Ramp
- ▲ Campground
- Bureau of Land Management
- Bureau of Reclamation
- US Fish & Wildlife Service



# Map 4

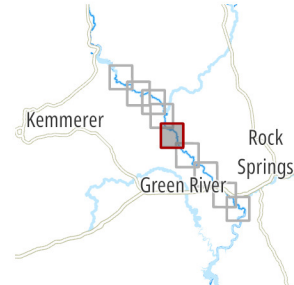
Miles 27 to 35





- River Mile
- 🚤 Boat Ramp
- ⛺ Campground

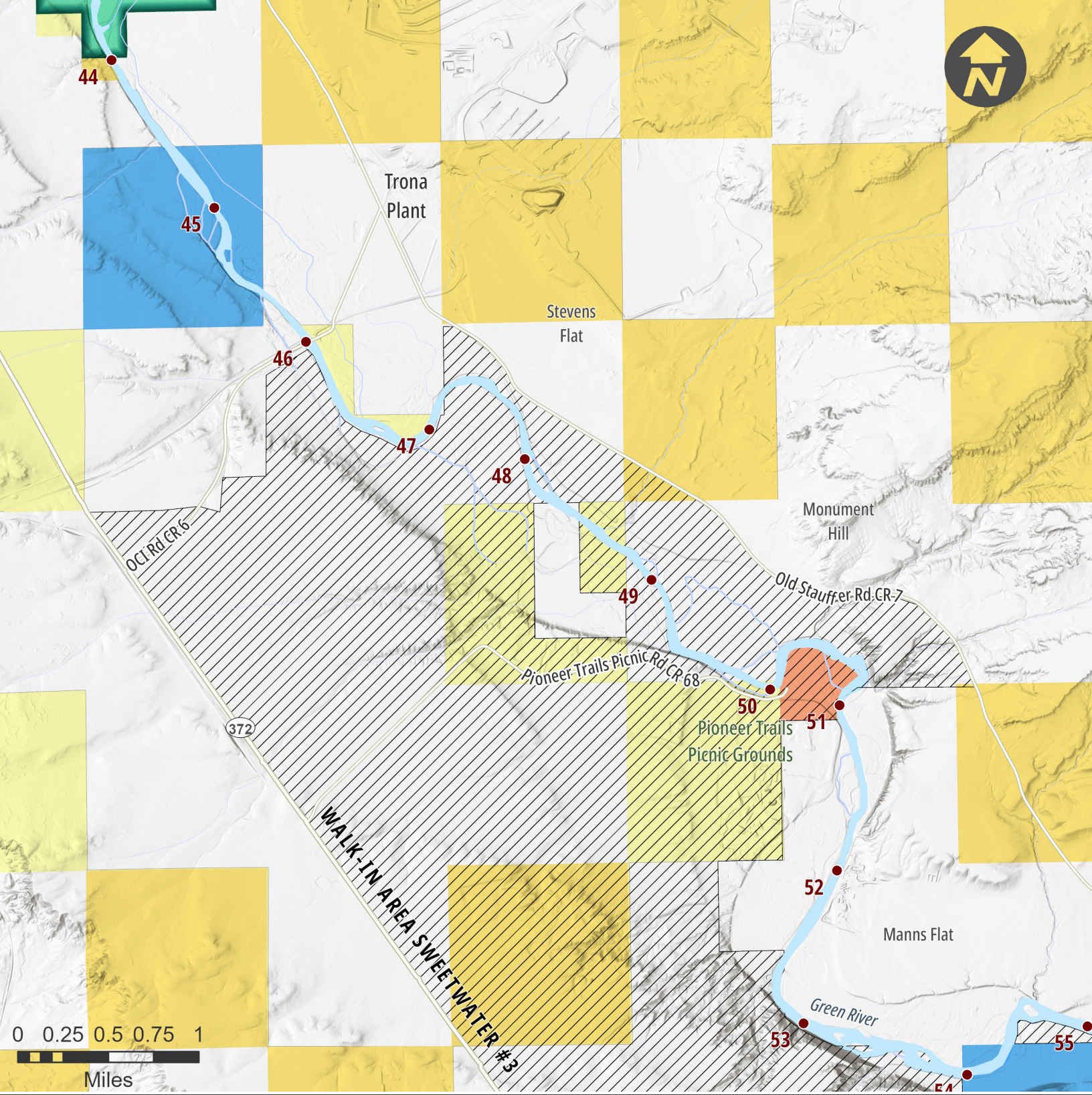
- Bureau of Land Management
- Bureau of Reclamation
- US Fish & Wildlife Service
- State of Wyoming



# Map 5

Miles 35 to 44

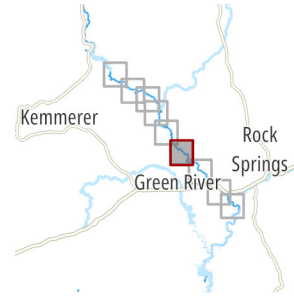




- River Mile
- 🚤 Boat Ramp
- ⛺ Campground

- 🟡 Bureau of Land Management
- 🟠 Bureau of Reclamation
- 🟢 US Fish & Wildlife Service
- 🟦 State of Wyoming
- 🟠 Sweetwater County

- 🏠 Private
- No Trespassing
- No Wading
- No Anchoring
- 🏠 Walk-In Area Sweetwater #3

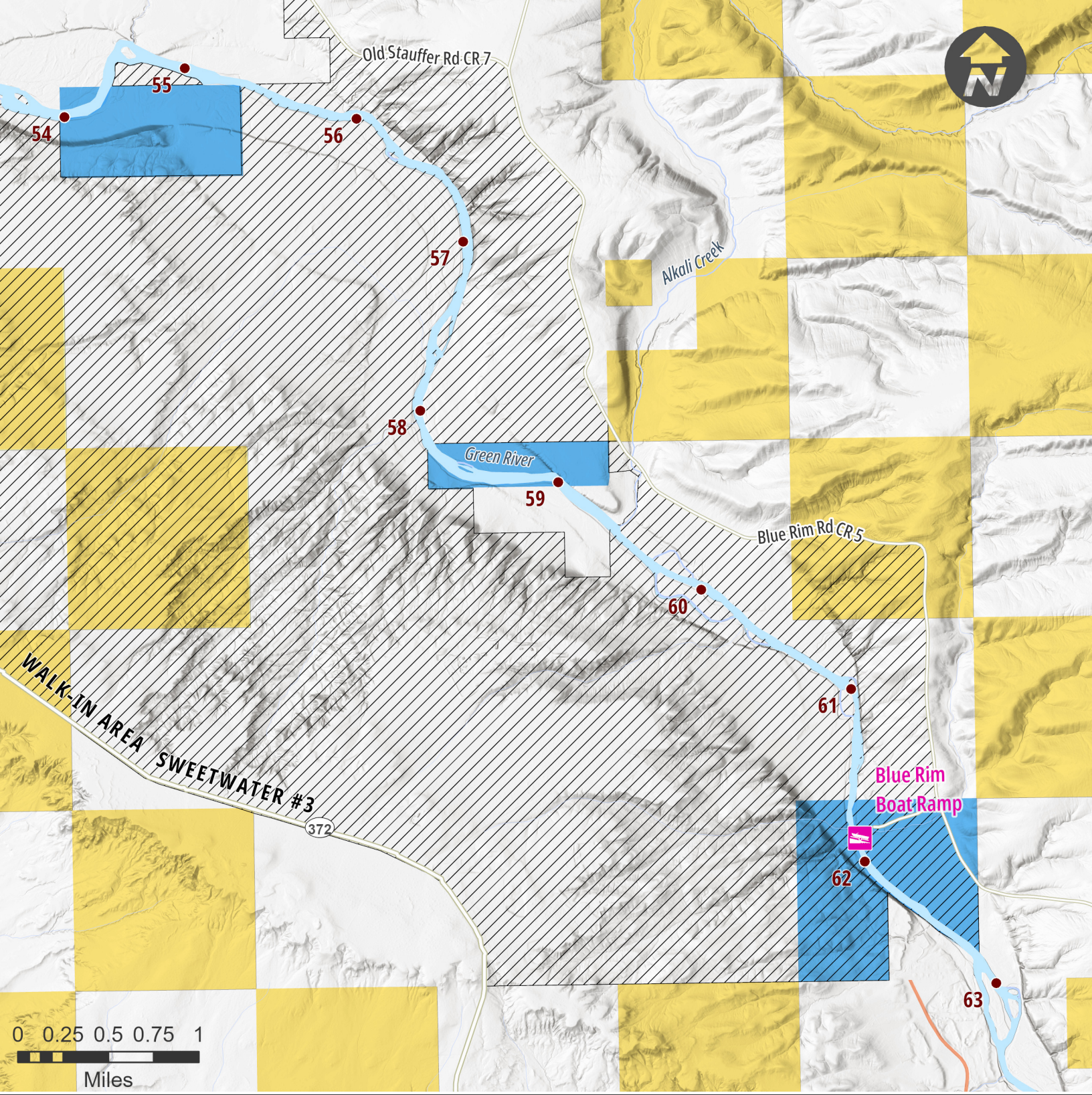


# Map 6

Miles 44 to 55



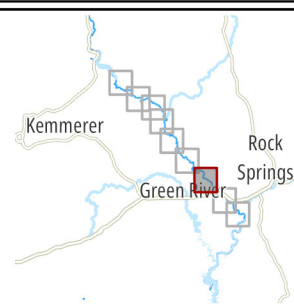




- River Mile
- 🚤 Boat Ramp
- ⛺ Campground

- Bureau of Land Management
- Bureau of Reclamation
- State of Wyoming

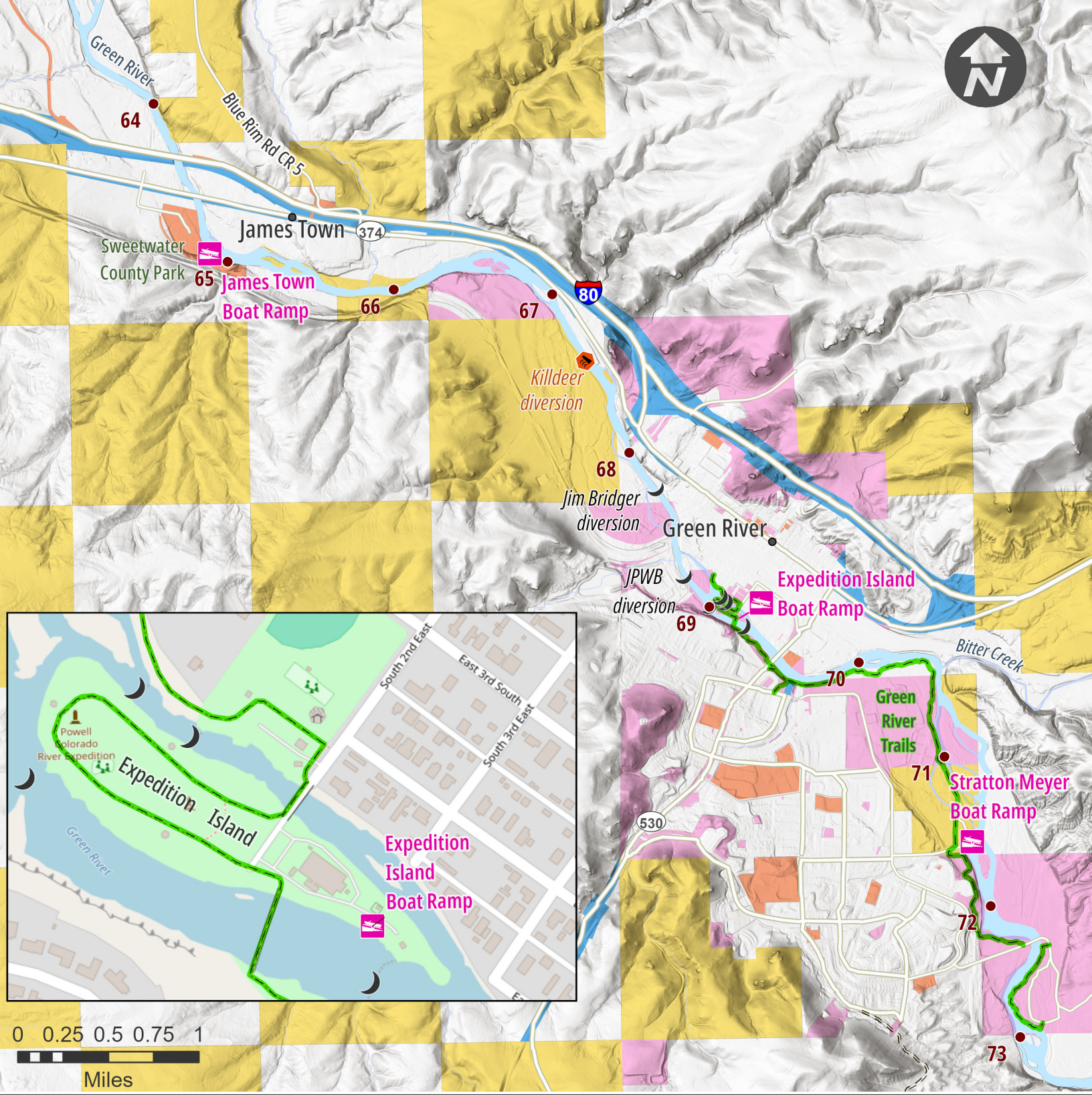
- Private
- No Trespassing
- No Wading
- No Anchoring
- ▨ Walk-In Area Sweetwater #3



# Map 7

Miles 54 to 63





- River Mile
- 🚤 Boat Ramp
- 🏕️ Campground
- 🌑 Rock Sill
- ⚠️ River Hazard

- 🟡 Bureau of Land Management
- 🟦 State of Wyoming
- 🟠 Sweetwater County
- 🟠 City of Green River

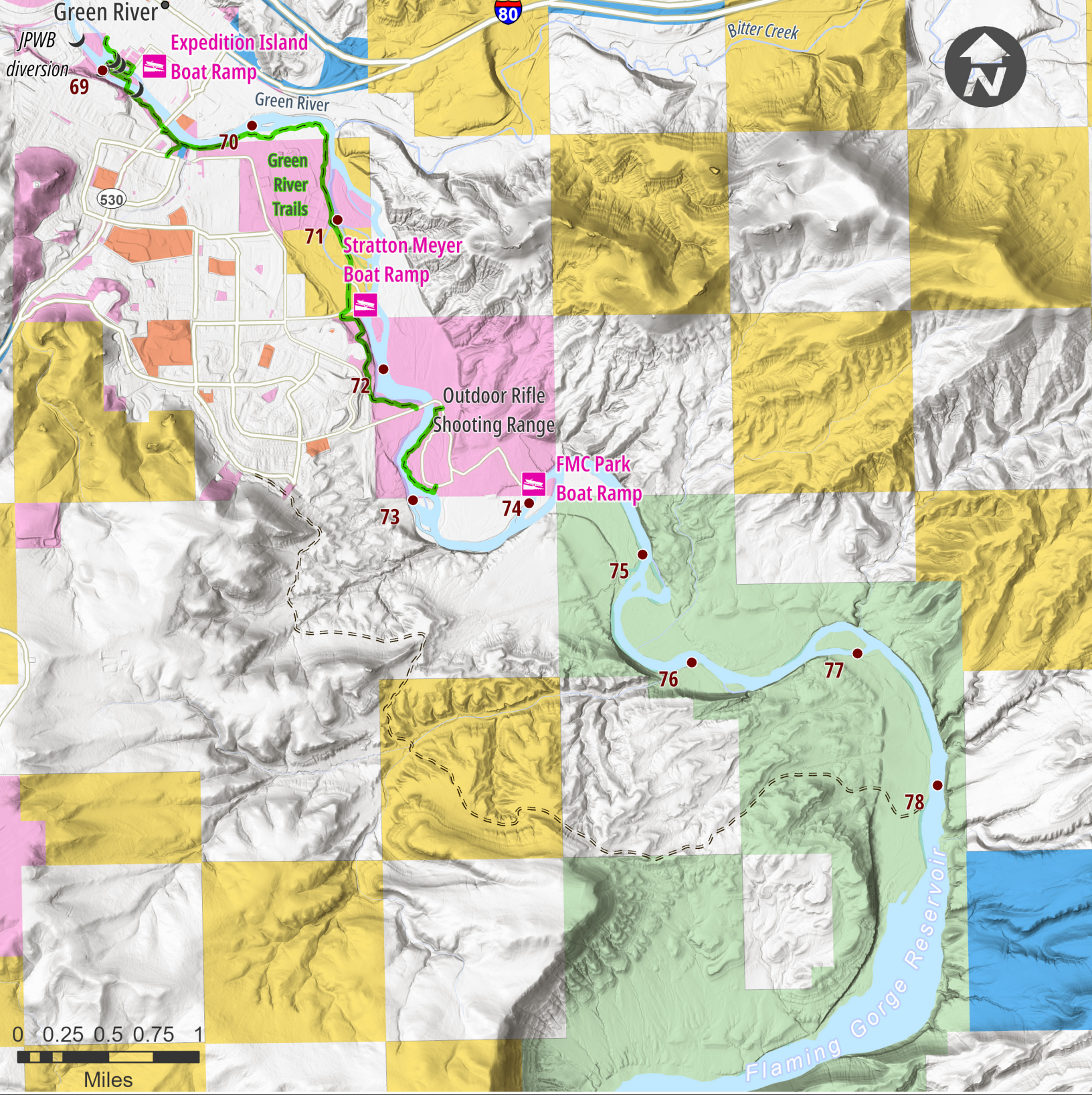
- 🏠 Private
- No Trespassing
- No Wading
- No Anchoring



# Map 8

Miles 64 to 73





- River Mile
- Boat Ramp
- ▲ Campground
- ☾ Rock Sill
- ⚠ River Hazard
- Bureau of Land Management
- Forest Service
- State of Wyoming
- Sweetwater County
- City of Green River
- Private
  - No Trespassing
  - No Wading
  - No Anchoring



# Map 9

Miles 69 to 78

