

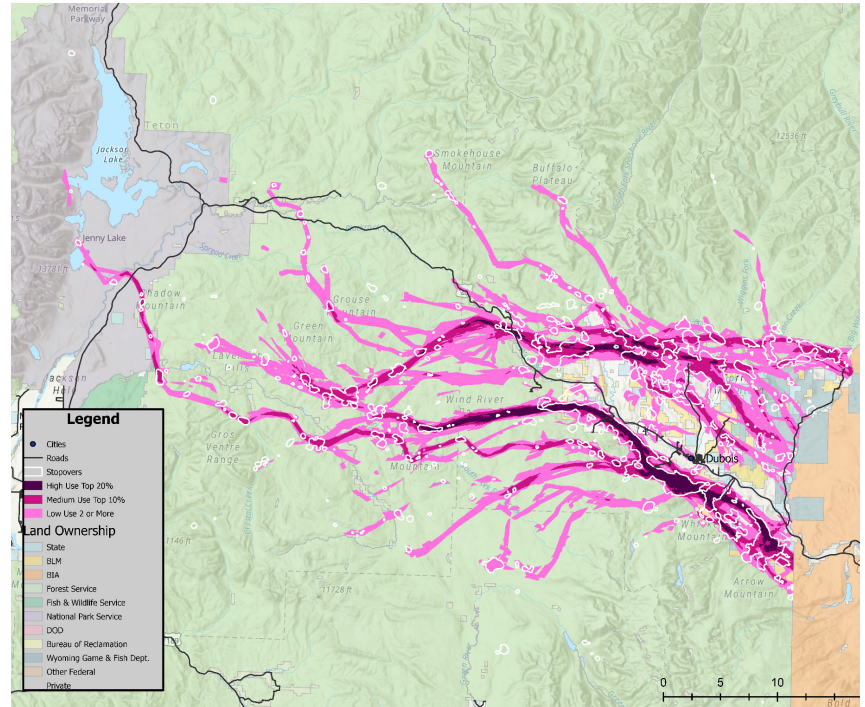


UPPER WIND RIVER MULE DEER MIGRATION CORRIDOR

WYOMING GAME AND FISH DEPARTMENT

IDENTIFYING A MIGRATION CORRIDOR: THE SCIENCE AND WHY

- Wyoming is home to important migrations, including the longest pronghorn and mule deer migrations in the continental United States.
- The Upper Wind River Mule Deer Migration Corridor is vital for the Dubois mule deer herd and others from Sublette, Grand Teton and Yellowstone. Despite a decline, the Dubois herd has fared better than statewide populations, likely due to intact migration routes and winter ranges. These mule deer migrate five to 90 miles seasonally.
- With the formal identification of the corridor, land managers will be provided with the most current data to implement conservation measures and utilize additional funding opportunities that will become available for conservation-based projects on private and public lands.
- Wyoming is committed to conserving these vital movements, which help maintain populations by connecting seasonal ranges they depend on for sustainability.
- The Department is following the public identification process outlined in the Governor's Migration Corridor Executive Order.



THE SCIENCE

- Over the last decade, Game and Fish wildlife managers and research partners have collected GPS data from 147 individual collared mule deer.
- The GPS-identified paths with a 300 meter buffer have revealed important pathways mule deer use, potential obstacles they face and stopover areas where mule deer spend the majority of their time resting and foraging along their journey.
- Collar data was used to define what portions of the migration corridor were high, medium and low use.



NEXT STEPS

- The Draft Threat Evaluation, maps and public comment form can be found by scanning the QR code below or by visiting the Game and Fish website.
- The deadline to submit public comment is 5 p.m. Aug. 9, 2024. Comments can be submitted online or by mail to the Pinedale Regional Game and Fish Office, PO Box 850, Pinedale, WY 82941.
- The Commission will be asked to approve the identification of the migration corridor at their September meeting.



QUESTIONS

Why is a designation not being pursued?

- The Department recommends identifying this migration corridor based on existing protections and current and anticipated threats. This will provide land managers with the best data for conservation and help secure funding for maintaining the corridor.

How does identifying a migration corridor affect private lands?

- The Executive Order does not apply regulations to private land.
- Private landowners have an opportunity to access additional funding for conservation work.



Scan this QR code to provide public comment and learn more about the migration corridor.