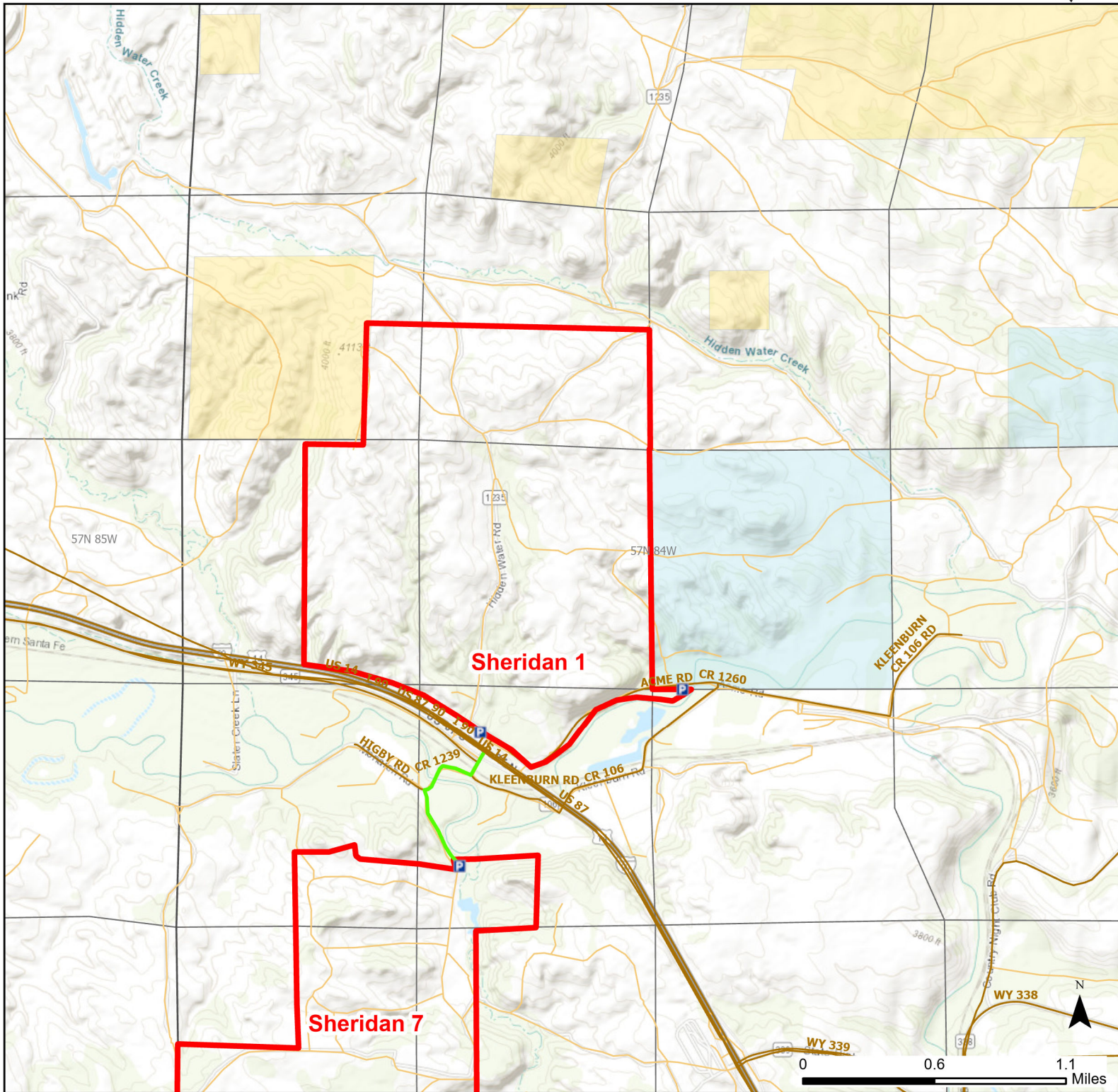




Sheridan 1 Walk-in Hunting Area

Access Dates:
08/15 - 05/31
2024 Hunt Season



| | | | | |
|--------------------------|--------------|-------------------|-----------------------------------|---------------------------|
| Parking | Closed Road | Boundary | Limited Range Weapons and Archery | State |
| Road Closed | WIA Use Only | Archery Only | Other | DOD |
| Coupon Box | Roads | County Boundaries | CLOSED | BLM |
| Gate | Open Road | | | Forest Service |
| Special Conditions Apply | | | | Wyoming Game & Fish Dept. |
| | | | | Private |

Species allowed to hunt: Pheasant, Sharp-tailed Grouse, Doves, Partridge, Turkey, Rabbit, Antelope, Deer

Rules: All vehicles must park in designated parking areas only. Prairie dog hunting allowed.

This map is for visual use, assistance and general location only, does not represent a survey, and is not to be used for legal conveyance. Hunt Area boundaries are approximate, consult Game and Fish Hunting Regulations for descriptions and restrictions. Access to these private lands for any commercial activity must be gained by contacting the individual landowner(s) directly.