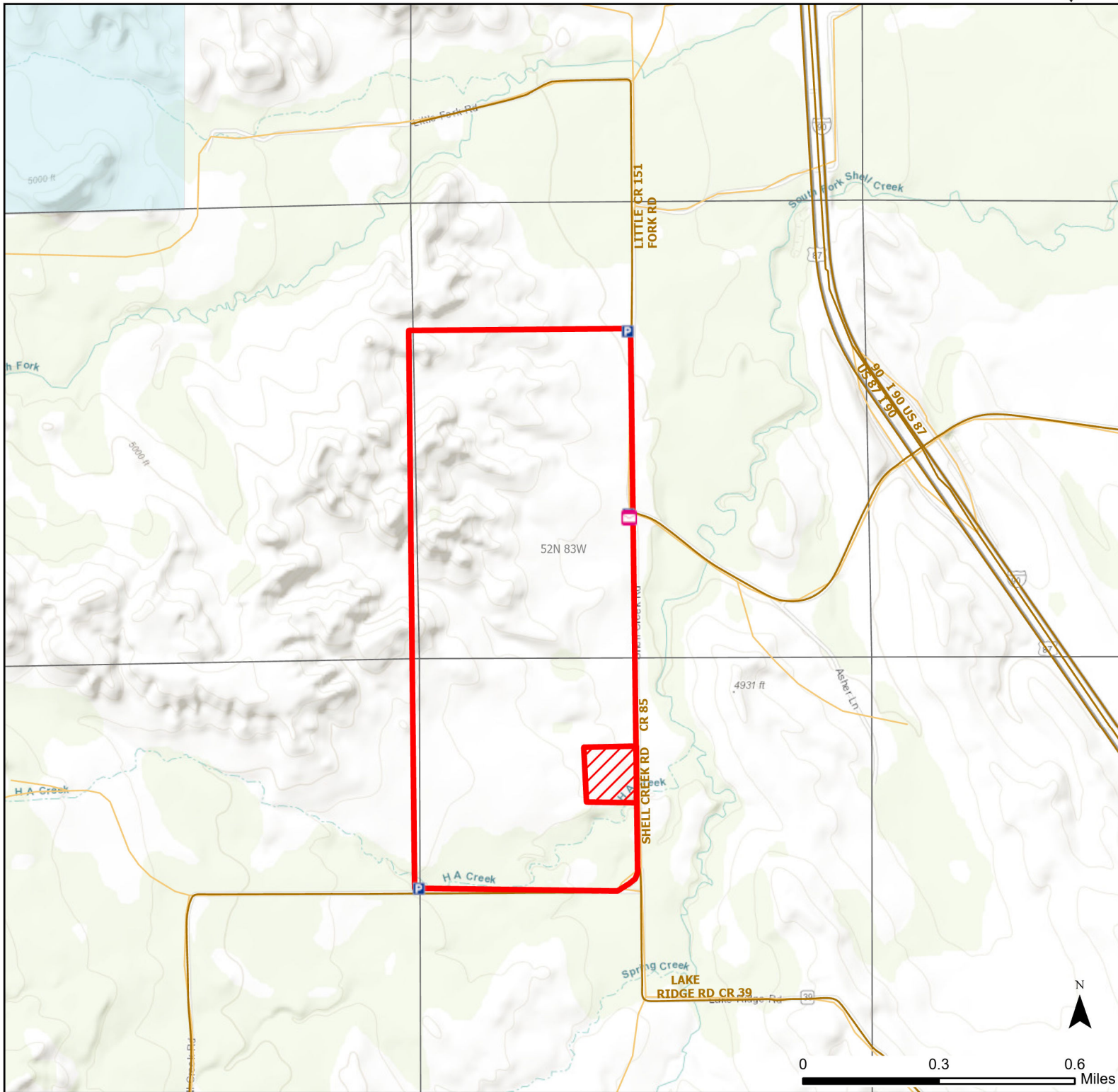




Johnson 8 Walk-in Hunting Area

Access Dates:
8/15 - 11/15
2024 Hunt Season



| | | | | |
|--------------------------|-------------------|--------------|-----------------------------------|---------------------------|
| Parking | Closed Road | Boundary | Limited Range Weapons and Archery | State |
| Road Closed | WIA Use Only | Archery Only | Other | DOD |
| Coupon Box | Roads | | | BLM |
| Gate | County Boundaries | | | Forest Service |
| Open Road | | | | Wyoming Game & Fish Dept. |
| Special Conditions Apply | | | CLOSED | Private |

Species allowed to hunt: Antelope, White-tailed Deer

Rules: All vehicles must park in designated parking areas only. White-tailed deer hunting only. No mule deer hunting. Area 102 type 6 Antelope licenses holders can ONLY use archery equipment from August 15 - October 14. Rifle hunting allowed October 15-November 15.

This map is for visual use, assistance and general location only, does not represent a survey, and is not to be used for legal conveyance. Hunt Area boundaries are approximate, consult Game and Fish Hunting Regulations for descriptions and restrictions. Access to these private lands for any commercial activity must be gained by contacting the individual landowner(s) directly.