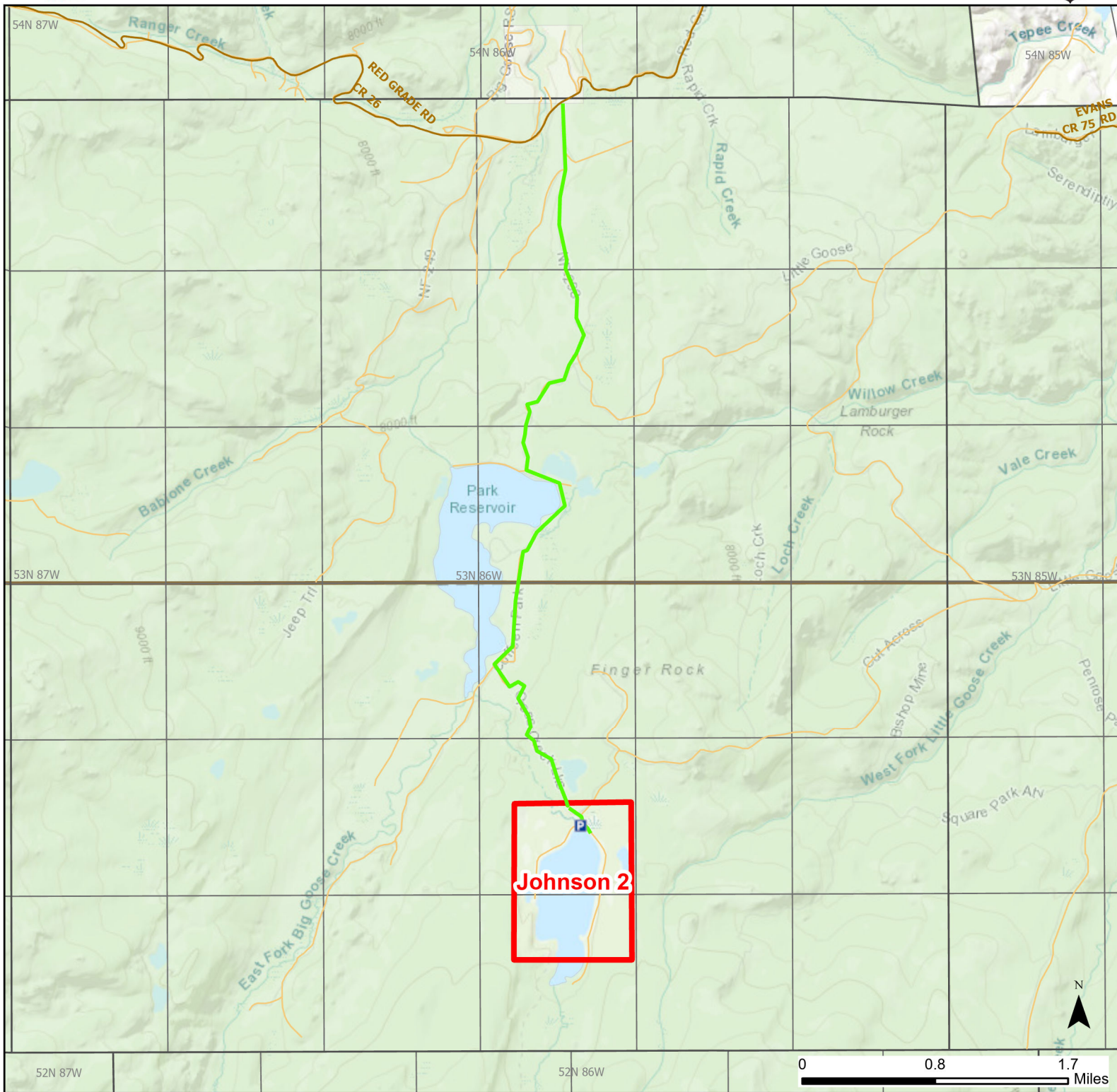




# Johnson 2 Walk-in Hunting Area

Access Dates:  
09/01 - 05/31  
2024 Hunt Season



Parking	Closed Road	Boundary	Limited Range Weapons and Archery	State
Road Closed	WIA Use Only	Archery Only	Other	DOD
Coupon Box	Roads			BLM
Gate	County Boundaries			Forest Service
Open Road			CLOSED	Wyoming Game & Fish Dept.
Special Conditions Apply				Private

Species allowed to hunt: Waterfowl, Blue/Ruffed Grouse, Doves, Turkey, Rabbit, Deer, Elk

Rules: Motorized vehicle access limited to designated roads only. Designated roads are marked with a white arrow. No Motorized travel allowed on lake bed. Stay on trail 625 to access FS property south of private land.

This map is for visual use, assistance and general location only, does not represent a survey, and is not to be used for legal conveyance. Hunt Area boundaries are approximate, consult Game and Fish Hunting Regulations for descriptions and restrictions. Access to these private lands for any commercial activity must be gained by contacting the individual landowner(s) directly.