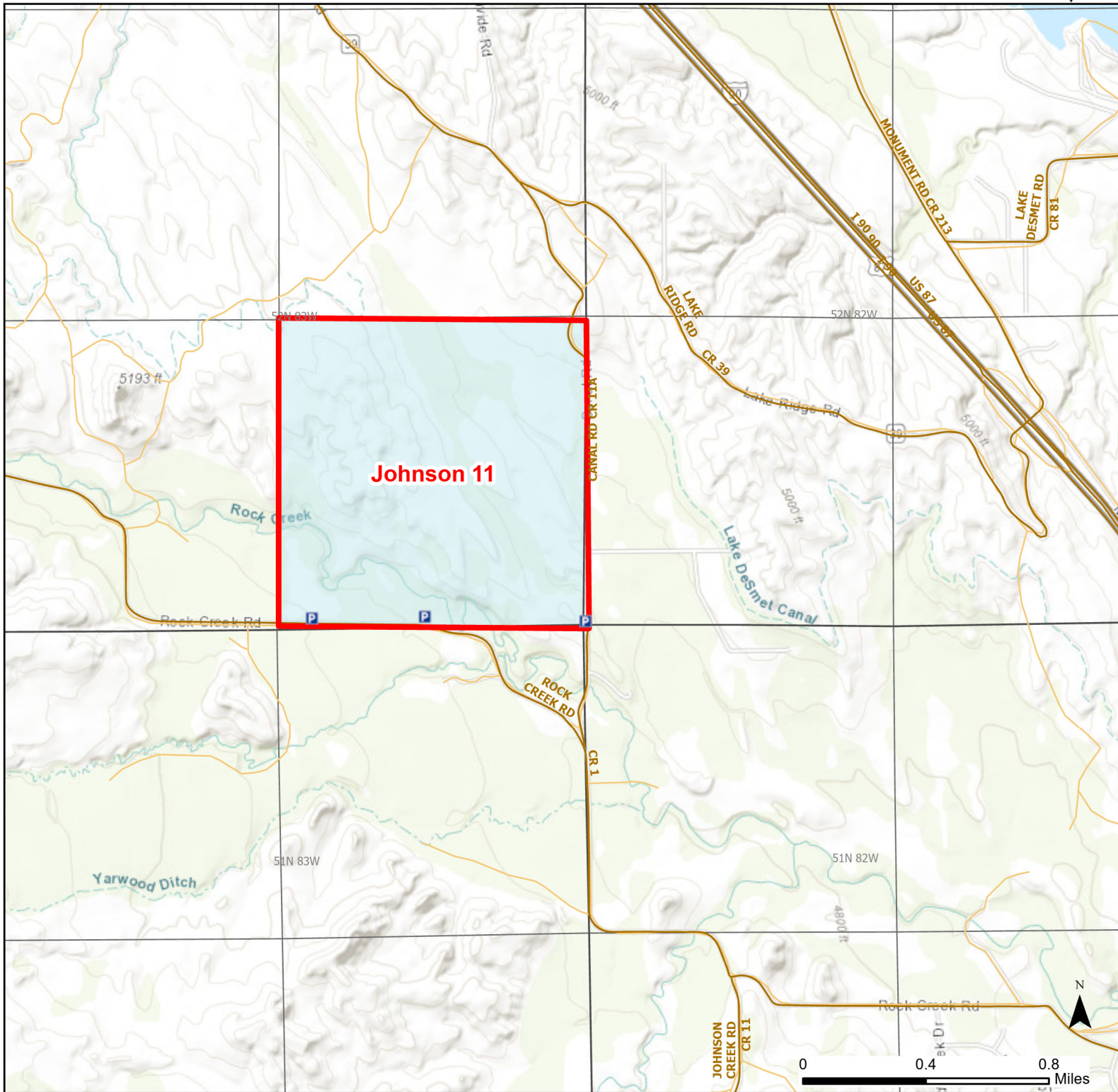




Johnson 11 Walk-in Hunting Area

Access Dates:
08/15 - 05/31
2024 Hunt Season



Parking	Closed Road	Boundary	Limited Range Weapons and Archery	State
Road Closed	WIA Use Only	Archery Only	Other	DOD
Coupon Box	Roads			BLM
Gate	County Boundaries			Forest Service
Open Road				Wyoming Game & Fish Dept.
Special Conditions Apply			CLOSED	Private

Species allowed to hunt: Waterfowl, Pheasant, Sharp_tail Grouse, Blue Grouse, Doves, Partridge, Turkey, Rabbit, Antelope, Deer, Elk

Rules: All vehicles must park in designated parking areas only. State lands are enrolled in this Walk-in Area. All access restrictions apply.

This map is for visual use, assistance and general location only, does not represent a survey, and is not to be used for legal conveyance. Hunt Area boundaries are approximate, consult Game and Fish Hunting Regulations for descriptions and restrictions. Access to these private lands for any commercial activity must be gained by contacting the individual landowner(s) directly.