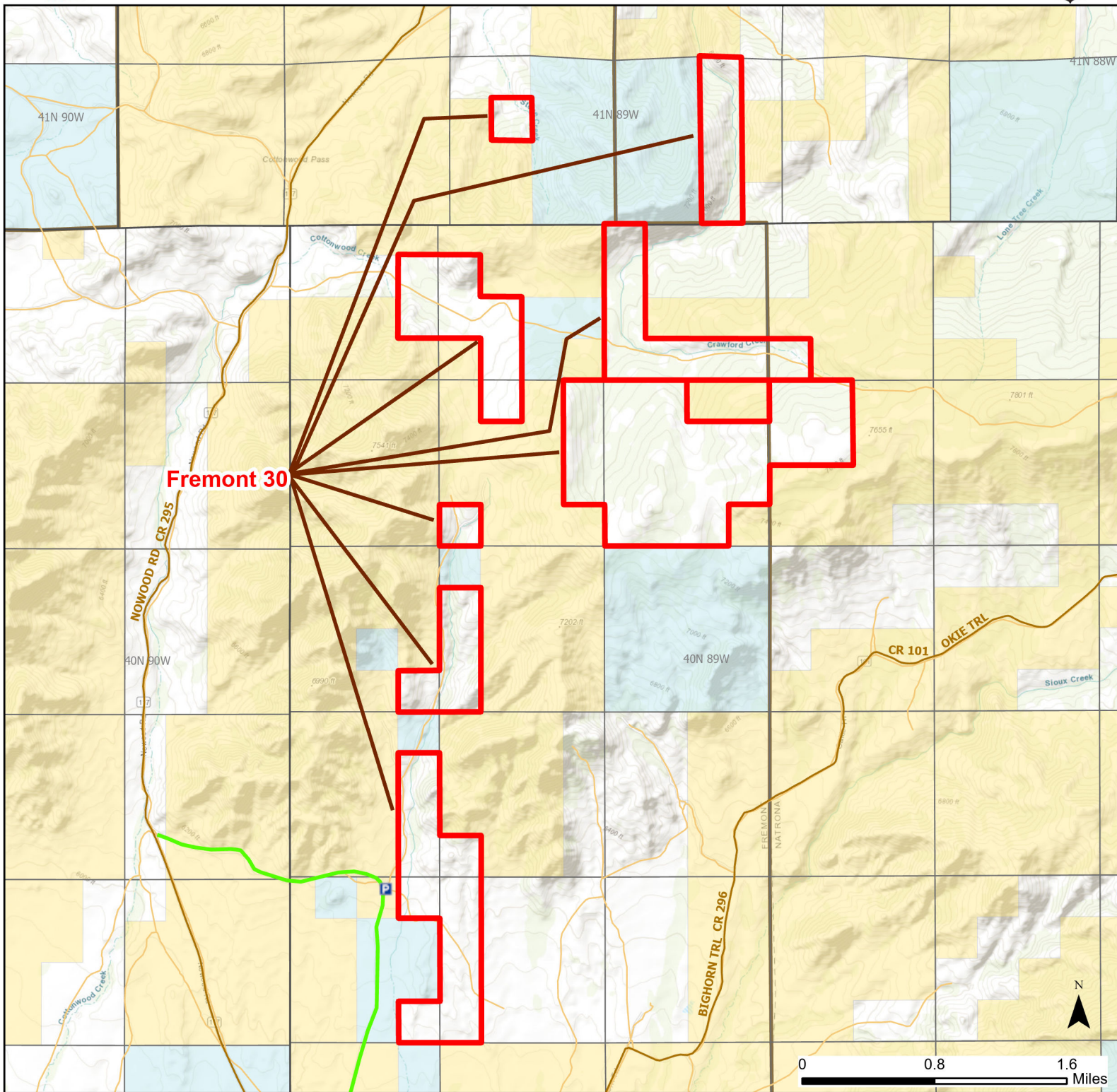




Fremont 30 Walk-in Hunting Area

Access Dates:
08/15 - 01/31
2024 Hunt Season



| | | | | |
|--------------------------|--------------|-------------------|-----------------------------------|---------------------------|
| Parking | Closed Road | Boundary | Limited Range Weapons and Archery | State |
| Road Closed | WIA Use Only | Archery Only | Other | DOD |
| Coupon Box | Roads | County Boundaries | CLOSED | BLM |
| Gate | | | | Forest Service |
| Open Road | | | | Wyoming Game & Fish Dept. |
| Special Conditions Apply | | | | Private |

Species allowed to hunt: Partridge, Antelope, Deer, Elk

Rules: All vehicles must park in designated parking areas only. Hunters allowed to hunt off horseback.