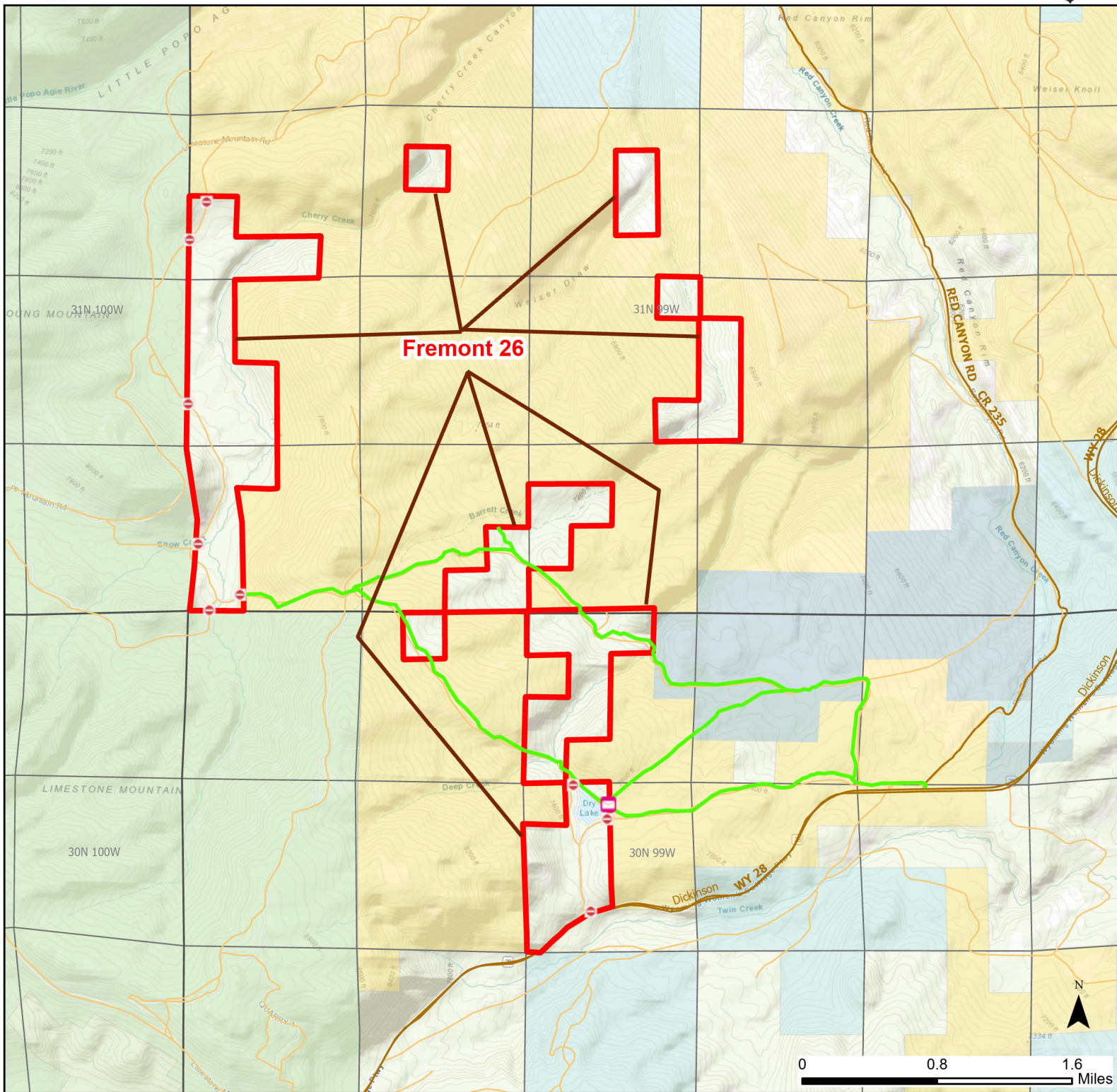




# Fremont 26 Walk-in Hunting Area

Access Dates:  
08/15 - 11/30  
2024 Hunt Season



Parking	Closed Road	Boundary	Limited Range Weapons and Archery	State
Road Closed	WIA Use Only	Archery Only	Other	DOD
Coupon Box	Roads	County Boundaries	CLOSED	BLM
Gate	Open Road			Forest Service
Special Conditions Apply				Wyoming Game & Fish Dept.
				Private

Species allowed to hunt: Sage Grouse, Blue Grouse, Ruffed Grouse, Partridge, Antelope, Deer, Elk, Moose

Rules: All vehicles must park in designated parking areas only. Motorized vehicle access limited to designated roads only. Designated roads are marked with a white arrow. Hunters allowed to hunt off horseback. Please deposit landowner coupons in containers provided on this Walk-in Area. Travel restricted to highways and county roads when conditions are wet or muddy.

This map is for visual use, assistance and general location only, does not represent a survey, and is not to be used for legal conveyance. Hunt Area boundaries are approximate, consult Game and Fish Hunting Regulations for descriptions and restrictions. Access to these private lands for any commercial activity must be gained by contacting the individual landowner(s) directly.