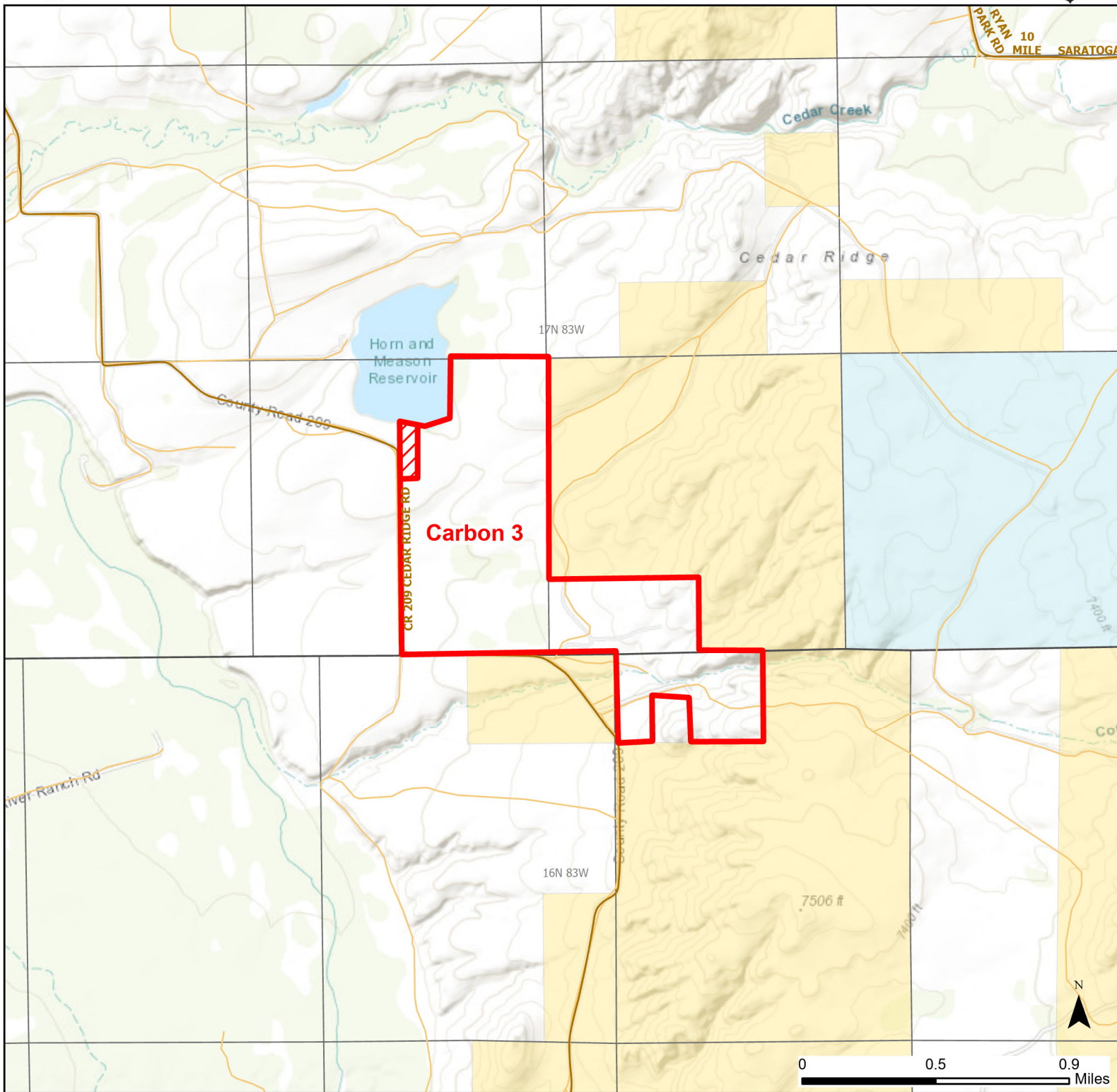




Carbon 3 Walk-in Hunting Area

Access Dates:
11/01 - 01/31
2024 Hunt Season



| | | | | |
|--------------------------|-------------------|-------------------|-----------------------------------|---------------------------|
| Parking | Closed Road | Boundary | Limited Range Weapons and Archery | State |
| Road Closed | WIA Use Only | Archery Only | Other | DOD |
| Coupon Box | Roads | County Boundaries | CLOSED | BLM |
| Gate | County Boundaries | | | Forest Service |
| Open Road | | | | Wyoming Game & Fish Dept. |
| Special Conditions Apply | | | | Private |

Species allowed to hunt: Antlerless Elk

Rules: Antlerless elk hunting only.