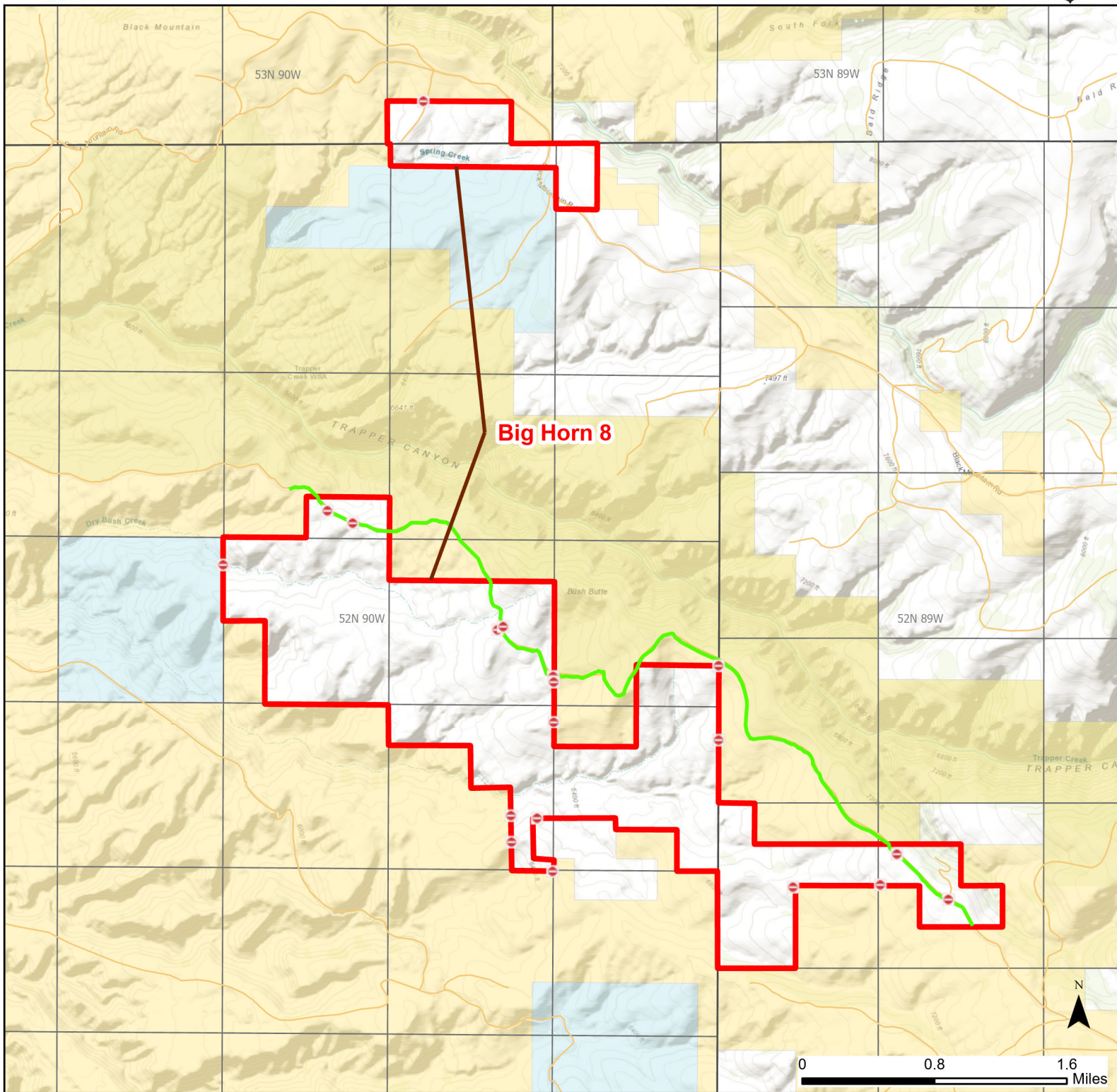




Big Horn 8 Walk-in Hunting Area

Access Dates:
09/01 - 12/21
2024 Hunt Season



| | | | | |
|--------------------------|-------------------|--------------|-----------------------------------|---------------------------|
| Parking | Closed Road | Boundary | Limited Range Weapons and Archery | State |
| Road Closed | WIA Use Only | Archery Only | Other | DOD |
| Coupon Box | Roads | CLOSED | | BLM |
| Gate | County Boundaries | | | Forest Service |
| Open Road | | | | Wyoming Game & Fish Dept. |
| Special Conditions Apply | | | | Private |

Species allowed to hunt: Partridge, Antelope, Deer, Elk

Rules: Motorized vehicle access limited to designated roads only. Designated roads are marked with a white arrow. Hunters allowed to hunt off horseback. Close gates immediately.

This map is for visual use, assistance and general location only, does not represent a survey, and is not to be used for legal conveyance. Hunt Area boundaries are approximate, consult Game and Fish Hunting Regulations for descriptions and restrictions. Access to these private lands for any commercial activity must be gained by contacting the individual landowner(s) directly.