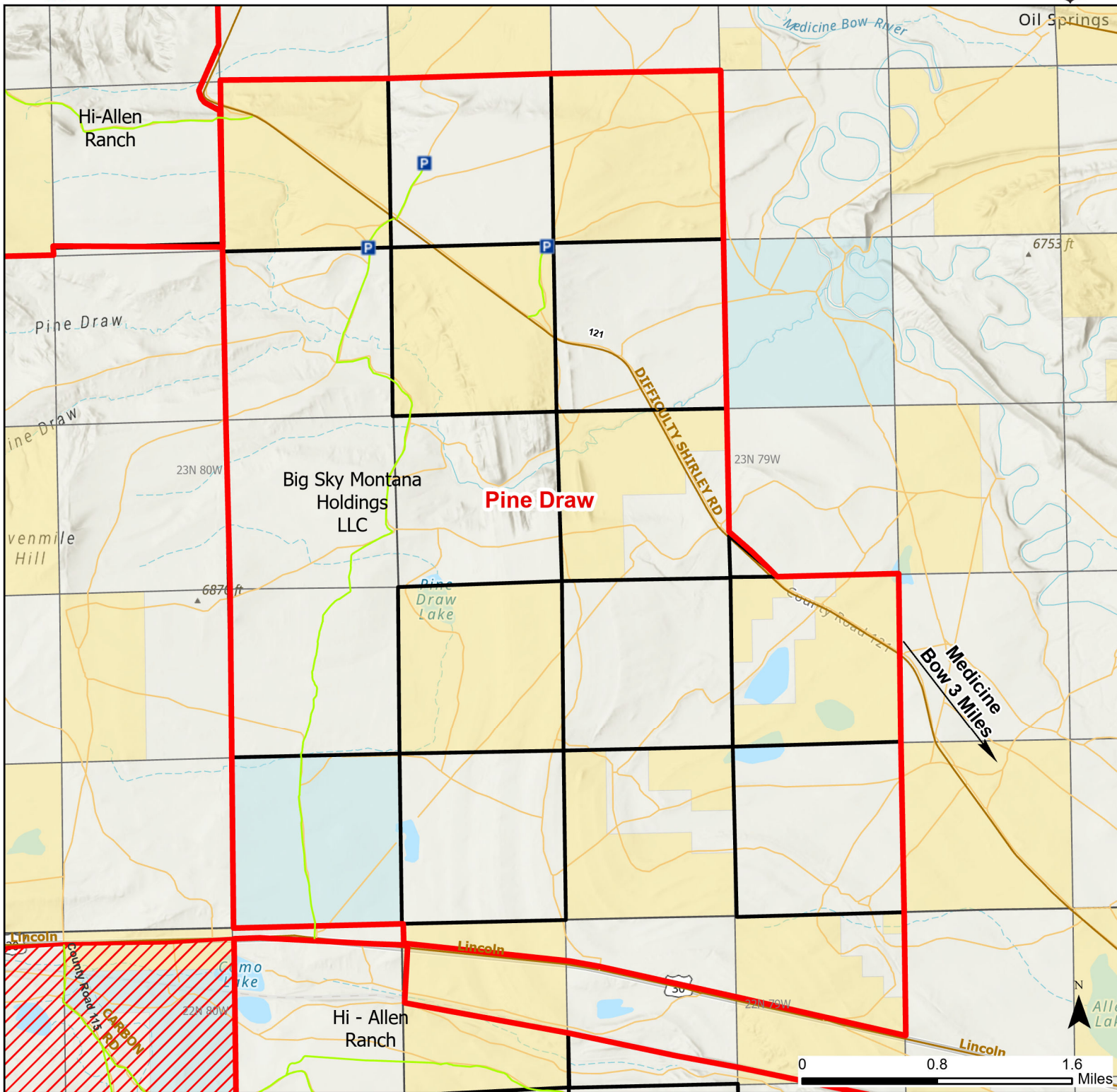




Pine Draw Hunter Management Area

2024 Hunt
Season



- | | | | | |
|--|--|--|--|--|
| | | | | |
| | | | | |
| | | | | |
| | | | | |
| | | | | |
| | | | | |
| | | | | |

Species allowed to hunt: Antelope, Antlered Deer

See Ranch Rules for More Information and Restrictions

Hunter Management Area rules apply only to those lands enrolled in the HMA.

This map is for visual use, assistance and general location only, does not represent a survey, and is not to be used for legal conveyance. Hunt Area boundaries are approximate, consult Game and Fish Hunting Regulations for descriptions and restrictions. Access to these private lands for any commercial activity must be gained by contacting the individual landowner(s) directly.