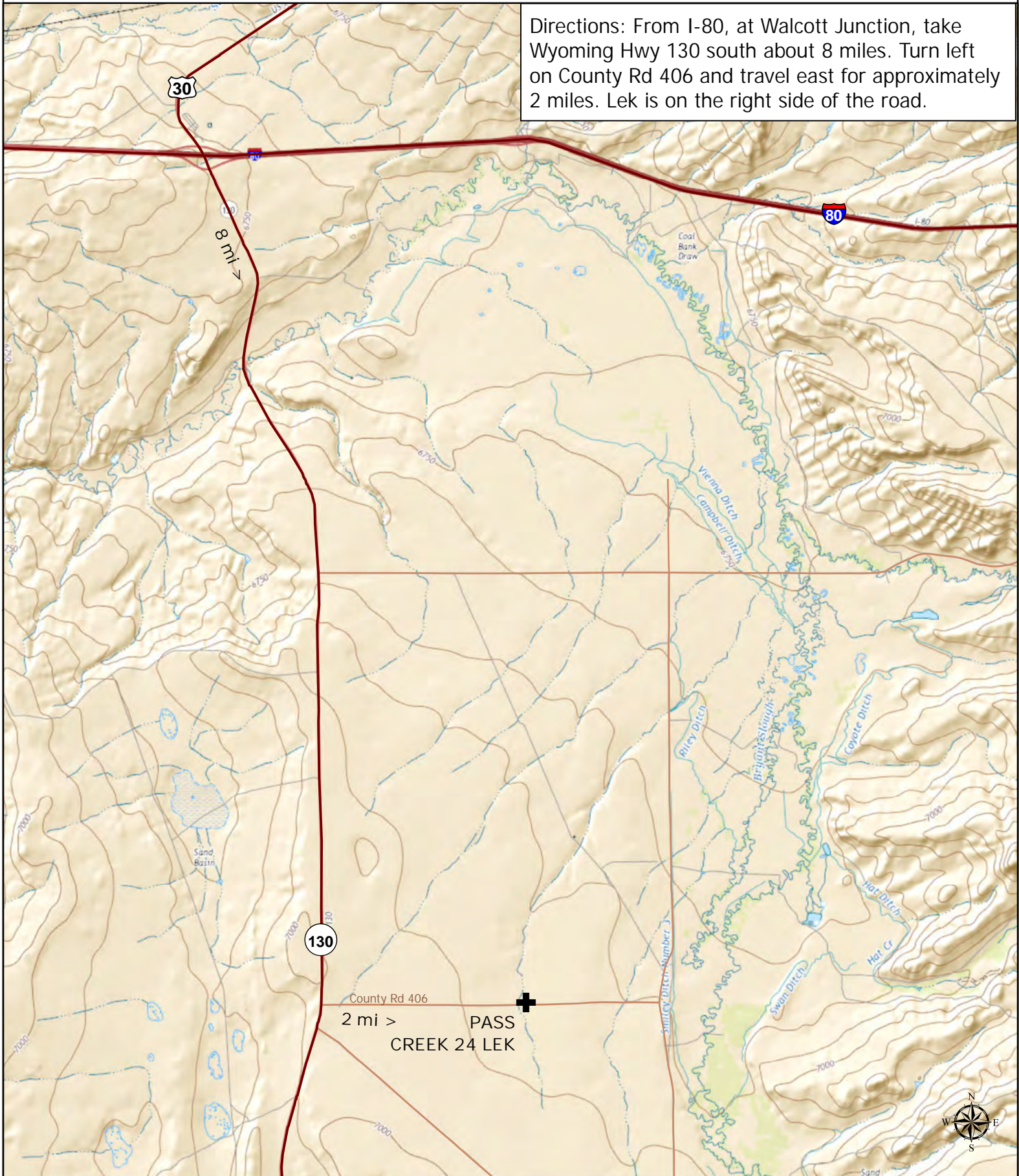


# Pass Creek 24 Lek in Carbon County

Directions: From I-80, at Walcott Junction, take Wyoming Hwy 130 south about 8 miles. Turn left on County Rd 406 and travel east for approximately 2 miles. Lek is on the right side of the road.



Nyssa Whitford  
Sage-Grouse GIS Analyst  
Lander Regional Office  
02.09.17

0 0.75 1.5 3 Miles

✚ Viewing Guide Lek