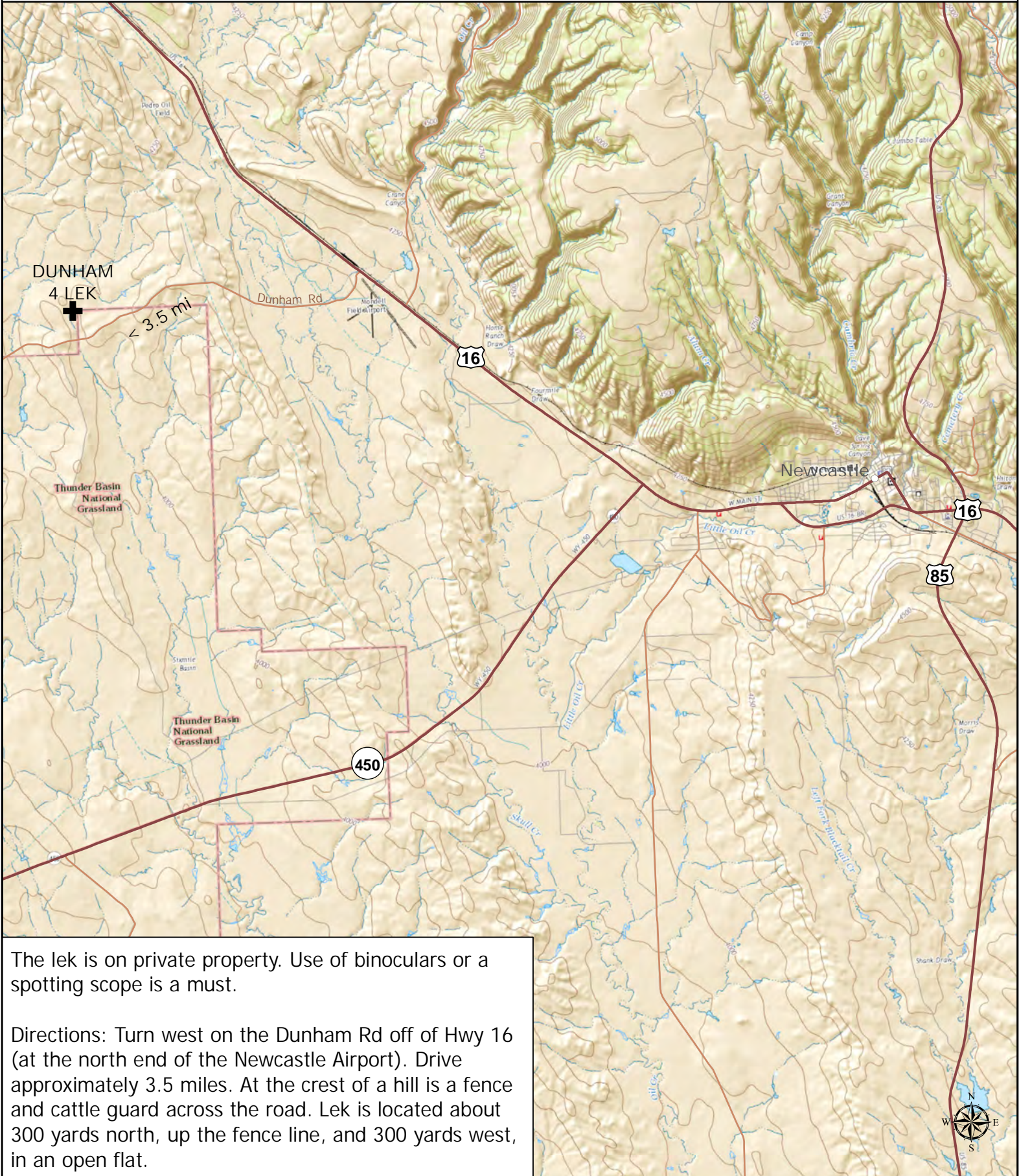


Dunham Lek in Weston County

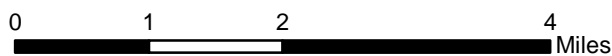


The lek is on private property. Use of binoculars or a spotting scope is a must.

Directions: Turn west on the Dunham Rd off of Hwy 16 (at the north end of the Newcastle Airport). Drive approximately 3.5 miles. At the crest of a hill is a fence and cattle guard across the road. Lek is located about 300 yards north, up the fence line, and 300 yards west, in an open flat.



Nyssa Whitford
Sage-Grouse GIS Analyst
Lander Regional Office
01.24.17



 Viewing Guide Lek