



WYOMING GAME AND FISH DEPARTMENT GRIZZLY BEAR MANAGEMENT CAPTURES, RELOCATIONS, AND REMOVALS IN NORTHWEST WYOMING

2025 ANNUAL REPORT



Female grizzly bear in trap with two cubs outside, September 2025 (WGFD).

Submitted to the Wyoming Legislature's Joint Travel, Recreation, Wildlife and Cultural Resources Interim Committee. This report is available to the public at the Wyoming Game and Fish Department Headquarters Office, Regional Offices and on the Department website at <https://wgfd.wyo.gov>. This report is in fulfillment of the requirements in Wyoming Statute §23-1-1001(c). Questions about this report or its content can be directed to Brian DeBolt, Wyoming Game and Fish Department, 260 Buena Vista, Lander, WY 82520, (307) 332-2688, brian.debolt@wyo.gov

Prepared by
Brian DeBolt, Large Carnivore Conflict Coordinator

Data compiled by Large Carnivore Section biologists
Clint Atkinson, Mark Aughton, Mike Boyce, Justin Clapp, Josiah Crump, Brian DeBolt, Justin Dellinger, Luke Ellsbury, Ryan Kindermann, Ken Mills, Phil Quick, Paul Rivera, Kesley Secrist, Annie Stevens, Scott Stingley, Dan Thompson, and other game wardens and wildlife biologists.

Wyoming Game and Fish Department
January 2026

Introduction

In Wyoming, *grizzly bear conflicts* are defined as “interactions between grizzly bears, people and their property, resulting in damage to pets, livestock or bees, non-natural food rewards, animal-caused human injury or death, and human-caused injury or death to an animal other than legal hunting or a management action.” Human-grizzly bear interactions and conflicts in Wyoming are a result of an abundance of bears seeking unnatural foods in association with people and property, close encounters with humans, or when bears kill livestock. Proactive prevention is the goal of the Wyoming Game and Fish Department (Department) in minimizing conflicts. However, the number and location of human-grizzly bear conflicts is influenced by the availability of unsecured unnatural attractants (e.g., human foods and garbage), seasonal distribution and abundance of natural foods, grizzly bear density and distribution, and human and livestock use patterns on the landscape. For purposes of this report, we will be referring directly to grizzly bears in regard to any management actions and numbers provided therein. Any relocation or removal of grizzly bears in Wyoming is dependent upon authorization from the U.S. Fish and Wildlife Service after careful and thorough deliberation considering multiple factors unique to each conflict situation.

Management techniques used around the world to reduce human-grizzly bear conflicts are employed by the Department, including the capture and relocation of problem individuals. While proactive outreach, education and preventative measures are the foundation of grizzly bear conflict management, hands-on mitigation techniques are requisite in many conflicts. Relocation achieves several social and conservation functions: (a) it reduces the chance of property damage, livestock damage, or human interactions in areas where the potential for conflict is high; (b) it reduces the potential for grizzly bears to become food conditioned and/or human habituated which often results in destructive and/or dangerous behaviors; (c) it allows grizzly bears the opportunity to forage on natural foods and remain wary of people; and (d) it could prevent removing grizzly bears from the population which may be beneficial in maintaining recovery criteria and population management objectives.

In addition to capture and relocation, the Department also removes grizzly bears, (lethally or by live placement into a zoo or other facility) in response to human-grizzly bear conflicts, when necessary, as part of routine management operations. All grizzly bear management actions reported herein were conducted in coordination with the U.S. Forest Service and the U.S. Fish and Wildlife Service. The decision to relocate or remove a grizzly bear is made after considering a number of factors including the age and sex of the animal, behavioral traits, health status, physical injuries or abnormalities, type of conflict, severity of conflict, known history of the animal, human safety concerns, availability of suitable relocation sites, and population management objectives. Grizzly bears are relocated or removed in accordance with Federal and State law, regulation, and policy.

In 2005, the Wyoming Legislature enacted House Bill 203, which created Wyoming Statute §23-1-1001 that requires the Department to:

(a) Upon relocating a grizzly bear or upon receiving notification that a grizzly bear is being relocated, the Department shall provide notification to the county sheriff of the county to which the grizzly bear is relocated within five (5) days of each grizzly bear relocation and shall issue a press release to the media and sheriff in the county where each grizzly bear is relocated;

(b) The notice and press release shall provide the following information:

(i) The date of the grizzly bear relocation;

(ii) The number of grizzly bears relocated; and

(iii) The location of the grizzly bear relocation, as provided by commission rule and regulation;

(c) No later than January 15 of each year the Department shall submit an annual report to the Joint Travel, Recreation, Wildlife, and Cultural Resources Interim Committee. The annual report shall include the total number and relocation area of each grizzly bear relocated during the previous calendar year. The Department shall also make the annual report available to the public.

Subsequently, the Wyoming Game and Fish Commission promulgated Chapter 58: Notification of Grizzly Bear Relocation Regulation (Appendix I) to further direct the implementation of Wyoming Statute §23-1-1001.

This report satisfies the requirements set forth in Wyoming Statute §23-1-1001(c) and provides additional information on grizzly bear captures, relocations, and removals by the Wyoming Game and Fish Department in Wyoming during 2025.

Grizzly Bear Management Captures, Relocations, and Removals

During 2025, the Department captured 46 individual grizzly bears in 46 capture events in order to prevent or resolve conflicts (Table 1, Figure 1). Of the 46 individual captures, 12 were females and 33 were male grizzly bears. One grizzly bear cub was of unknown sex because it was released without being handled.

Of the 46 individual captures, 20 captures were a result of bears killing livestock (cattle, sheep, and chickens), and 18 were captures involving bears that obtained food rewards (pet, livestock food, garbage, fruit trees), or were frequenting developed sites/human populated areas unsuitable for grizzly bear occupancy. Eight additional grizzly bears captured in management actions were not considered the offending bears. Of the 46 capture events, 35 (76%) were in Park County, five (11%) in Sublette County, two (4%) in Fremont County, three (7%) in Hot Springs County, and one (2%) in Teton County (Table 1).

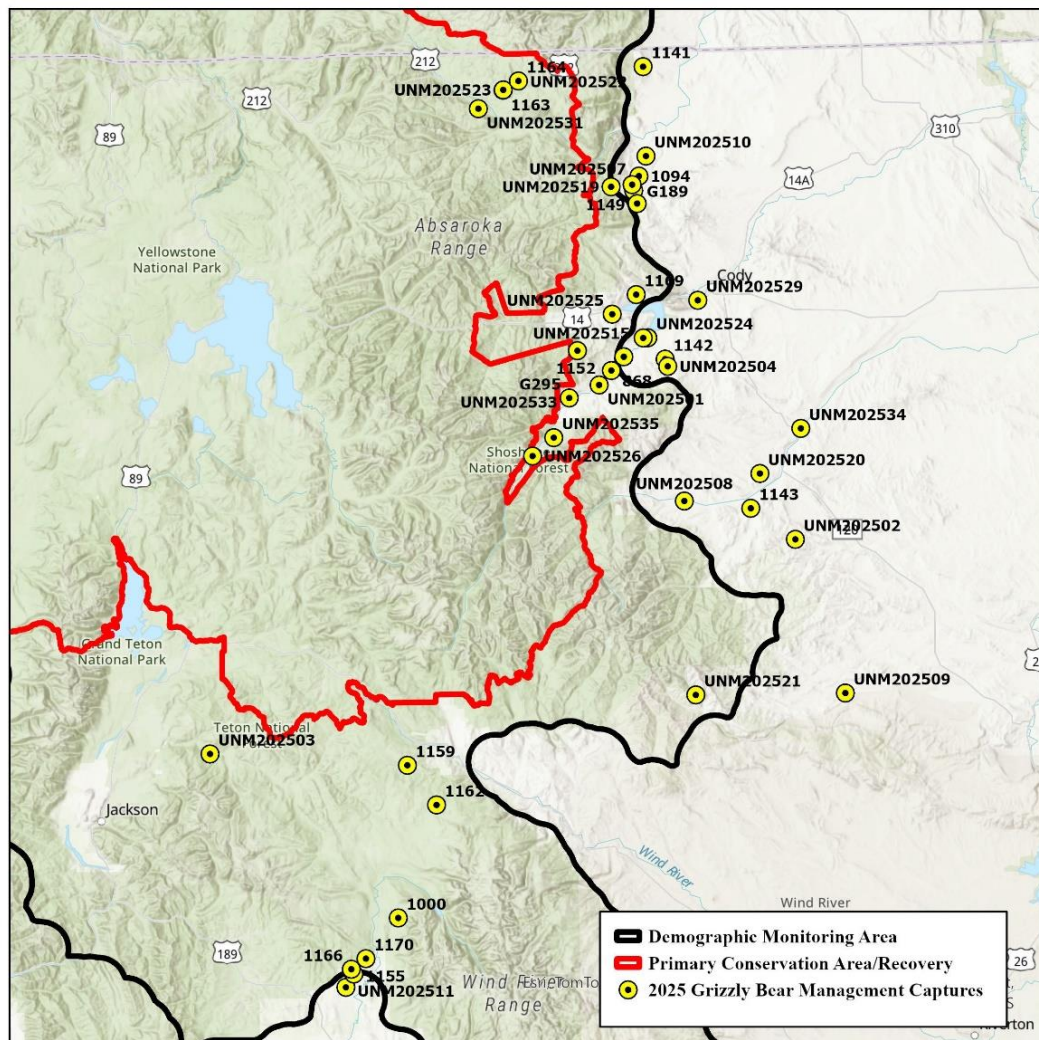
Of the 46 individual captures, there were 10 relocation events, with seven bears released on site because they were not the offending bear or relocation was not a suitable option (Table 1, Figure 2). All of the relocated grizzly bears were released on U.S. Forest Service lands in or adjacent to the Primary Conservation Area/Recovery Zone (Figure 2). Of the 10 relocation events, seven were conducted in Park County (70%), two (20%) in Teton County, and one in Sublette County (10%) (Table 1).

Grizzly bears are removed from the population if they have a history of previous conflicts, a known history of close association with humans, or if deemed unsuitable for release into the wild (e.g., orphaned cubs, poor physical condition, or human safety concern). Of the 46 grizzly bears captured, 27 bears were removed from the population. Of these 27 removals, 15 (56%) were outside of the Demographic Monitoring Area, which is the area considered suitable for the long-term viability of grizzly bears in the GYE and the area where grizzly bears are actively monitored in relation to demographic objectives.

Management Capture Summary Quick Reference:

46 Grizzly Bear Management Captures

- Ten (10) relocation events
- Seven (7) grizzly bears released on site
- Twenty-seven (27) lethal removals
- One (1) grizzly bear killed by another bear
- One (1) previously injured orphaned cub humanely removed



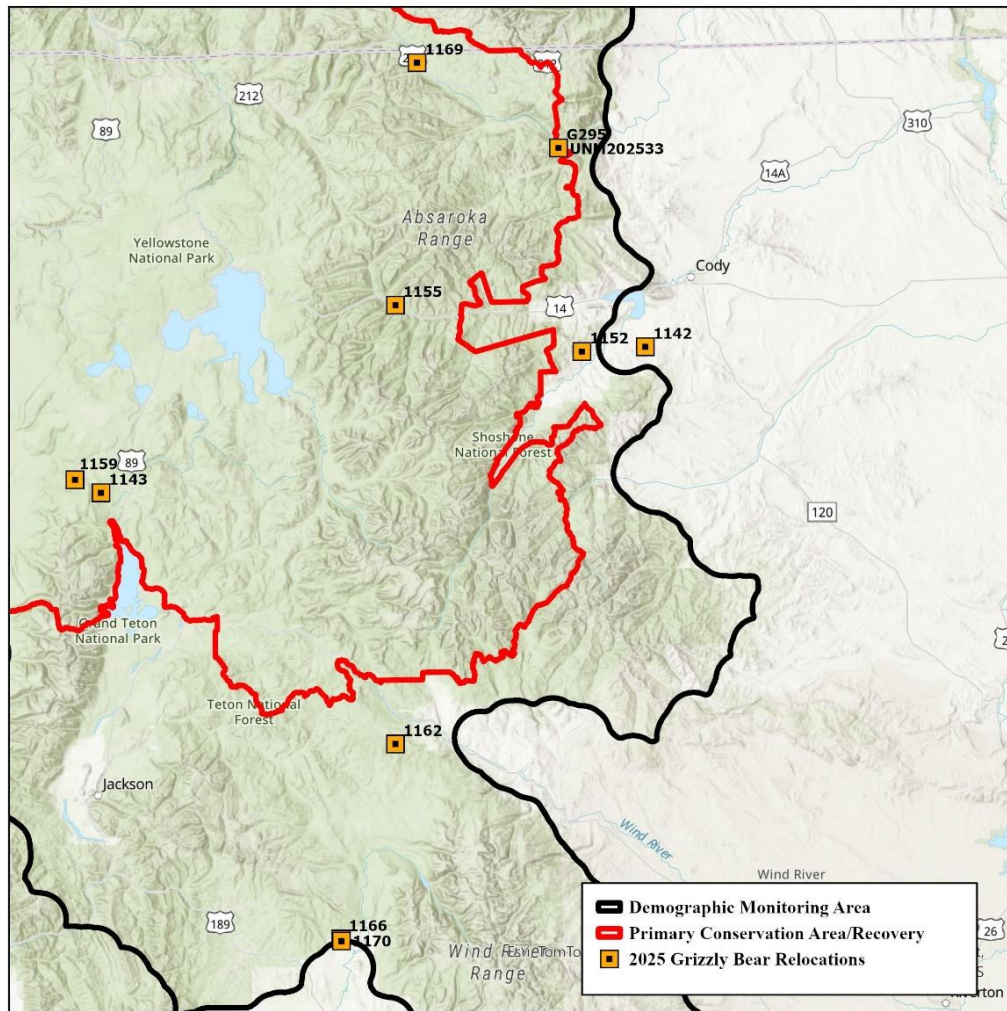


Figure 2. Release locations ($n = 10$) for grizzly bears captured and relocated in conflict management efforts in the Wyoming portion of the Greater Yellowstone Ecosystem, 2025. Because of the mapping scale, some locations may appear to be combined at one symbol; Table 1 provides details for each relocation event, it should be noted that bear 1170 is not included in the ten relocations because he was moved a very short distance from the capture site.

Notification to the County Sheriff and the Media

Within five days of releasing a grizzly bear, the county sheriff was notified by e-mail and a press release was distributed to all local media contacts in the county where the grizzly bear was released. All media releases contained: the date of the relocation; the number of grizzly bears relocated; the location of the grizzly bear relocation; the reason the grizzly bear was relocated; and additional bear safety and conflict avoidance information.

Table 1. Capture date, grizzly bear identification number (ID), capture county, relocation site, release county, and reason for capture for all 2025 grizzly bear conflict management captures ($n = 46$) in Wyoming.

Date	ID	Capture County	Relocation Site	Release County	Reason For Capture
4/22/2025	UNM202501	Park			Captured and removed for alpaca depredation.
4/25/2025	UNM202503	Teton			Capture and removed for human safety, food conditioned behavior and poor physical condition.
4/26/2025	UNM202502	Hot Springs			Captured and removed for cattle depredation.
5/2/2025	1142	Park	Clarks Fork, SNF	Park	Captured as a non-offender at a cattle depredation site and relocated.
5/2/2025	UNM202504	Park			Captured and removed for cattle depredation.
5/16/2025	1143	Park	Glade Creek; J. D Rockefeller Jr. Memorial Parkway	Teton	Captured and relocated for cattle depredation.
5/23/2025	1094	Park			Captured and removed for repeated cattle depredation and failed relocation attempt.
6/17/2025	1149	Park			Captured as a non-offender at a cattle depredation site and released on-site.
6/18/2025	UNM202507	Park			Captured for cattle depredation, killed by another bear while captured.
6/20/2025	UNM202509	Hot Springs			Captured and removed for sheep depredation.
6/20/2025	UNM202508	Park	Park		Captured and removed for multiple cattle depredations.
6/27/2025	UNM202511	Sublette			Captured and removed for repeated cattle depredations.
6/27/2025	UNM202510	Park			Captured and removed for cattle depredation.
7/8/2025	1152	Park	Timber Creek; SNF	Park	Captured as a non-offender at a cattle depredation site and relocated.
7/9/2025	UNM202515	Park		Park	Captured and removed for cattle depredation.
7/17/2025	1155	Sublette	Mormon Creek, SNF	Park	Captured and relocated for cattle depredation.
7/29/2025	1159	Fremont	Grassy Lake; BTNF	Teton	Captured as a non-offender at a cattle depredation site and relocated.
7/31/2025	UNM202517	Park			Captured and removed for frequenting developed areas, obtaining chicken feed and poor condition.
8/2/2025	UNM202518	Park	On site		Cub captured with sibling at a cattle depredation site.

Date	ID	Capture County	Relocation Site	Release County	Reason For Capture
8/2/2025	UNM202519	Park	On site		Cub captured with sibling at a cattle depredation site.
8/12/2025	UNM202520	Park			Captured and removed for cattle depredation.
8/15/2025	1162	Fremont	Mormon Creek, SNF	Park	Captured and relocated for cattle depredation.
8/17/2025	UNM202521	Hot Springs			Capture and removed for multiple cattle and sheep depredations.
8/17/2025	1000	Sublette			Captured and removed for repeated cattle depredations.
8/19/2025	1163	Park	On site		Captured as a non-offender near a campground site and released.
8/21/2025	1164	Park	On site		Captured with a sibling near a campground site; marked and released.
8/21/2025	1165	Park	On site		Captured with a sibling near a campground site; marked and released.
8/21/2025	UNM202522	Park			Captured and removed for frequenting campgrounds, bold-habituated behavior and obtaining food rewards.
8/22/2025	UNM202523	Park			Removed for frequenting campgrounds, bold-habituated behavior and obtaining food rewards.
8/22/2025	933	Park	On site		Mother 1164 and 1165. Captured near a campground site; marked and released.
8/26/2025	UNM202524	Park			Captured and removed for frequenting houses, habituated behavior and property damage.
8/27/2025	UNM202525	Park			Captured and removed for frequenting developed areas, habituated behavior and multiple food rewards.
8/30/2025	1166	Sublette	On site		Captured as a non-offender at a cattle depredation site and released on-site.
9/1/2025	UNM202526	Park			Captured and removed for pig depredation.
9/8/2025	868	Park			Captured and removed for frequenting residential area, obtaining food rewards, previous conflict history and poor health.
9/13/2025	UNM202529	Park			Captured and removed for frequenting residential areas and being in the city of Cody, WY.
9/16/2025	UNM202531	Park			Captured and removed for breaking into secured garbage destroying a yurt and barbecue grills.
9/21/2025	G294	Park	Clarks Fork, SNF	Park	Captured and relocated with sibling (orphaned cubs) away from residential area.
9/21/2025	G295	Park	Clarks Fork, SNF	Park	Captured and relocated with sibling (orphaned cubs) away from residential area.

Date	ID	Capture County	Relocation Site	Release County	Reason For Capture
9/21/2025	UNM202533	Park			Removed for frequenting residential areas and damaging fruit trees.
9/28/2025	UNM202534	Park			Captured and removed for cattle depredation and aggression toward humans.
10/7/2025	G189	Park			Captured and removed for cattle depredation (private land)
10/11/2025	1169	Park	Clarks Fork, SNF	Park	Captured and relocated for frequenting houses, damaging fruit trees and failed hazing attempts
10/24/2025	1170	Sublette	Twin Creek	Sublette	Incidental capture by public-marked and released nearby.
10/25/2025	1141	Park			Captured and removed for frequenting developed areas, failed hazing attempts, and previous conflict history.
11/2/2025	UNM202535	Park			Orphaned cub captured for frequenting developed areas and humanely removed for severe foot damage.

Appendix I. Wyoming Game and Fish Commission's Notification of Grizzly Bear Relocation Regulation

WYOMING GAME AND FISH COMMISSION

CHAPTER 58

NOTIFICATION OF GRIZZLY BEAR RELOCATION REGULATION

Section 1. Authority. This regulation is promulgated by authority of W.S. §23-1-1001.

Section 2. Definitions. Definitions shall be as set forth in Title 23, Wyoming Statutes, Commission regulations, and the Commission also adopts the following definitions:


(a) "County Sheriff" means the County Sheriff's Office in the county where a grizzly bear is relocated.

(b) "Location of the grizzly bear relocation" means the proper name of the drainage in which a grizzly bear is relocated and the estimated number of miles from the relocation site to the nearest municipality, topographical feature or geographic location.

(c) "Provide a press release" means the Department shall provide to the County Sheriff and the media in the county in which a grizzly bear is relocated, a press release including the location of the grizzly bear relocation, number of grizzly bears relocated, date of the relocation and the reason the grizzly bear was relocated.

Section 3. Notification of relocation. Upon relocating a grizzly bear or upon receiving notification that a grizzly bear is being relocated, the Department shall notify the County Sheriff of the date, number of grizzly bears relocated, the location of the grizzly bear relocation and the reason of the relocation via direct telephone conversation, written or electronic correspondence, or personal contact within five (5) days of the date of the relocation. The Department shall provide a press release to the County Sheriff and the media in the county where a grizzly bear is relocated of the date, number of grizzly bears relocated, the location of the grizzly bear relocation and the reason of the relocation within five (5) days of the date of relocation of any grizzly bear.

WYOMING GAME AND FISH COMMISSION

By: 
Mike Healy, President

Dated: January 22, 2014