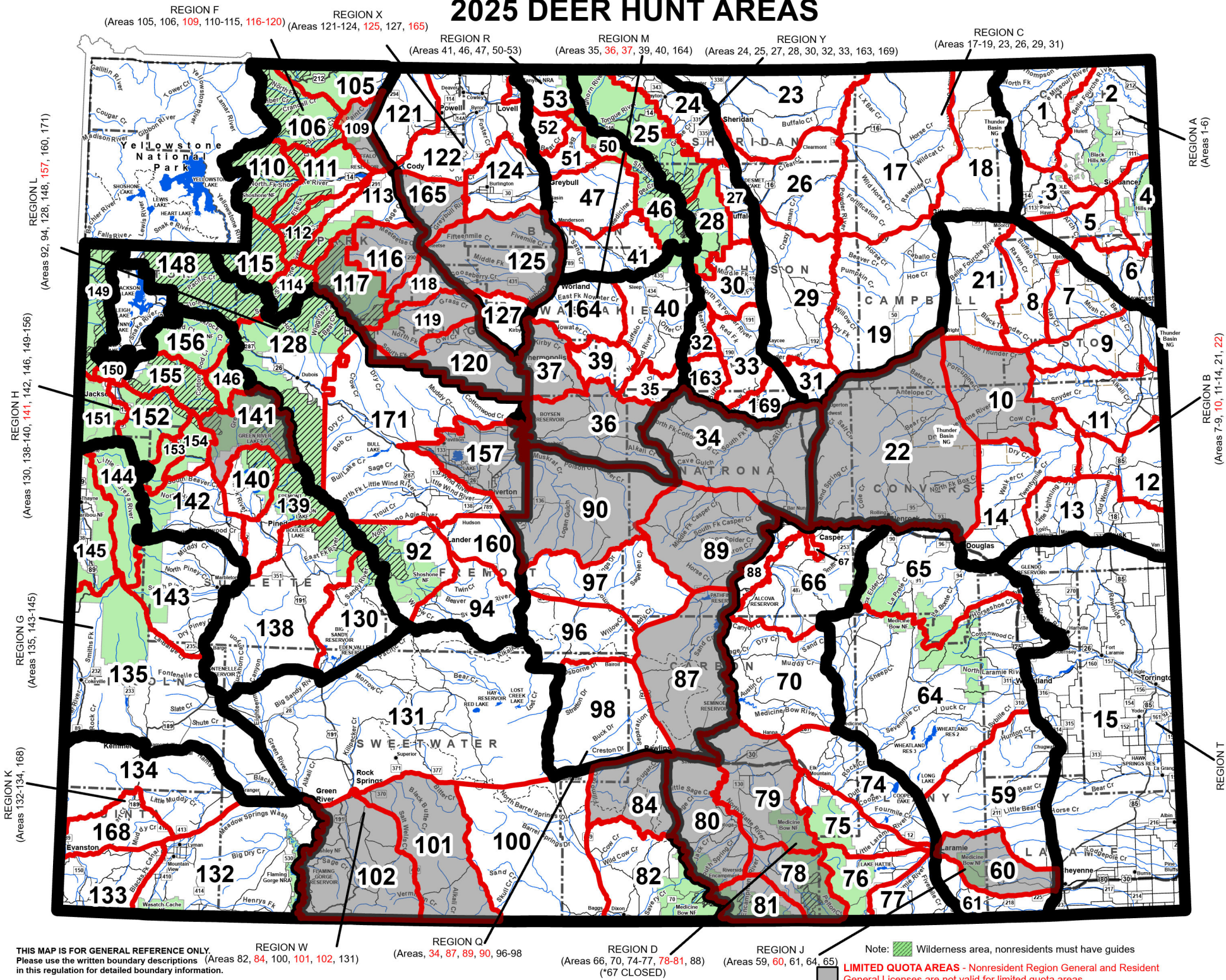


2025 DEER HUNT AREAS



THIS MAP IS FOR GENERAL REFERENCE ONLY. Please use the written boundary descriptions in this regulation for detailed boundary information.

REGION W (Areas 82, 84, 100, 101, 102, 131)

REGION Q (Areas 34, 87, 89, 90, 96-98)

REGION D (Areas 66, 70, 74-77, 78-81, 88) (*67 CLOSED)

REGION J (Areas 59, 60, 61, 64, 65)

Note: Wilderness area, nonresidents must have guides

LIMITED QUOTA AREAS - Nonresident Region General and Resident General Licenses are not valid for limited quota areas.