

# Middle Green River Access Map

Fontenelle to Flaming Gorge

• River Mile Posts

🚤 Boat Ramps





## Trespassing

The Middle Green River Access Map portrays 70+ miles of the Green River from Fontenelle to Flaming Gorge reservoirs. The river flows through both public and private lands, and it is the responsibility of the recreationist to know where they are in the area. It is legal to float through private land, but you must **stay in your boat at all times unless explicit permission has been obtained from the landowner. Trespassing includes anchoring and wading without landowner permission.**

## River Hazards

River hazards exist between river miles 67 and 70 (Map 8). We recommend **all recreationists should take out at the James Town Boat Ramp** located at river mile 65 in the Sweetwater County Park and **do not attempt to navigate over these hazards.**

## Roads

Roads depicted within this map vary from maintained, paved roads to unmaintained, primitive roads. Road conditions are dependent on time of season and weather.

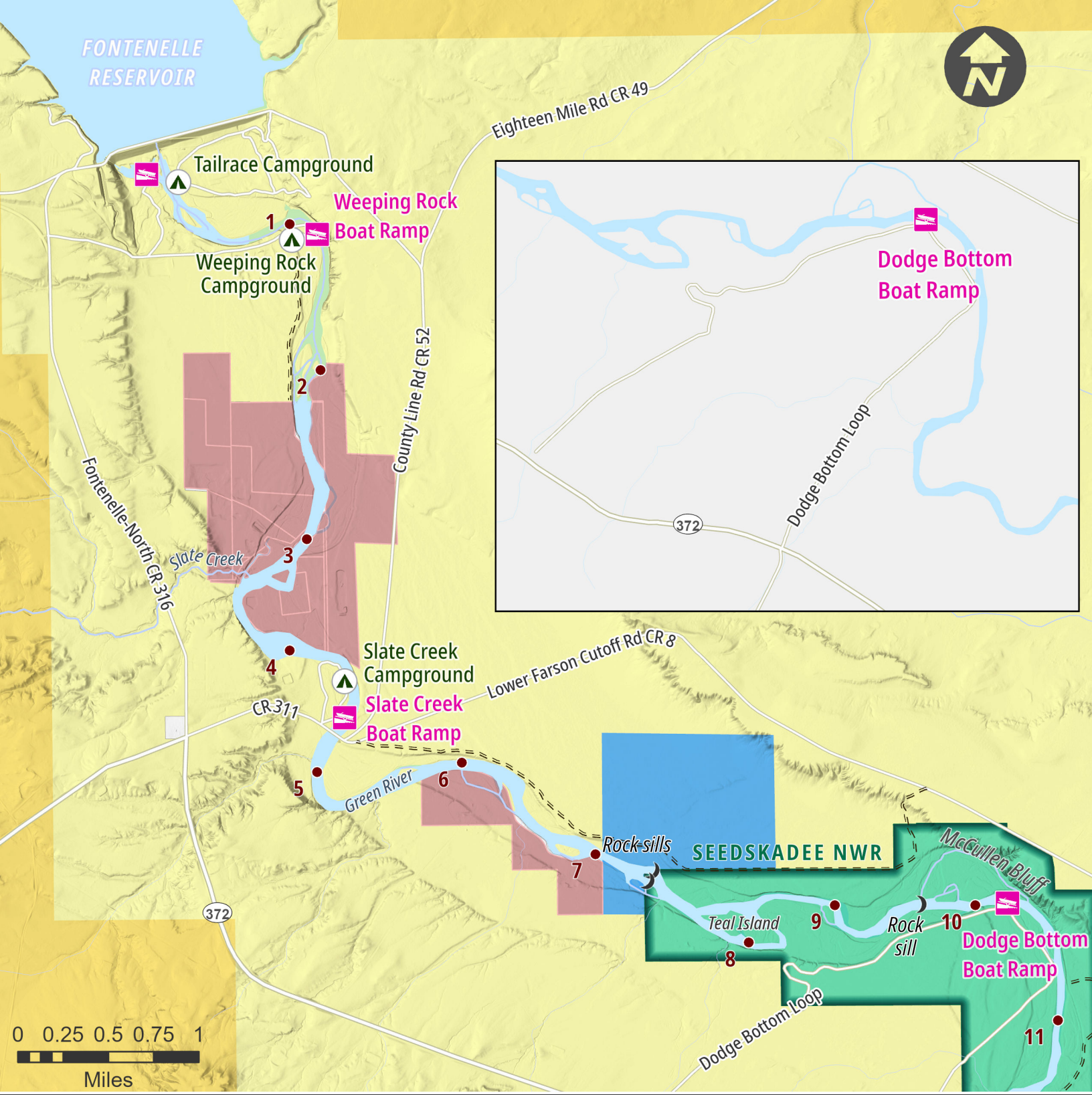
## Fishing Regulations

The Wyoming Game and Fish Department recommends all anglers possess a copy (print or digital) of the current fishing regulations. **The Green River has multiple exceptions to the Statewide Regulations.** Statewide fishing regulations, creel limits, and specific area exceptions can be found in the current Wyoming Fishing Regulations brochure available on the Wyoming Game and Fish website (<https://wgfd.wyo.gov>).

## River Miles Between Boat Ramps

Fontenelle Dam to Weeping Rock .....	1.2
Weeping Rock to Slate Creek .....	3.5
Slate Creek to Dodge Bottom .....	5.5
Dodge Bottom to Hay Farm .....	7.3
Hay Farm to Highway 28 .....	8.8
Highway 28 to Six Mile .....	9.2
Six Mile to Blue Rim .....	26.4
Blue Rim to James Town .....	3.3
James Town to Expedition Island .....	4.3
Expedition Island to Stratton Meyer .....	2.4
Stratton Meyer to FMC Park .....	2.4

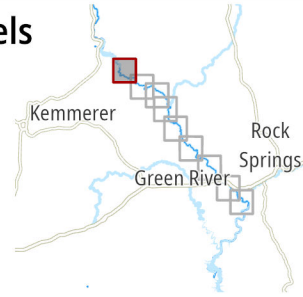




- River Mile Posts
- 🚤 Boat Ramps
- ⛺ Campgrounds
- 🌊 Rock Sills

- ### Land Ownership
- 🟡 BLM
  - 🟨 Bureau of Reclamation
  - 🟢 Fish & Wildlife Service
  - 🟩 Private

- 🟤 Sensitive Private Parcels
- No Trespassing
- No Wading
- No Anchoring

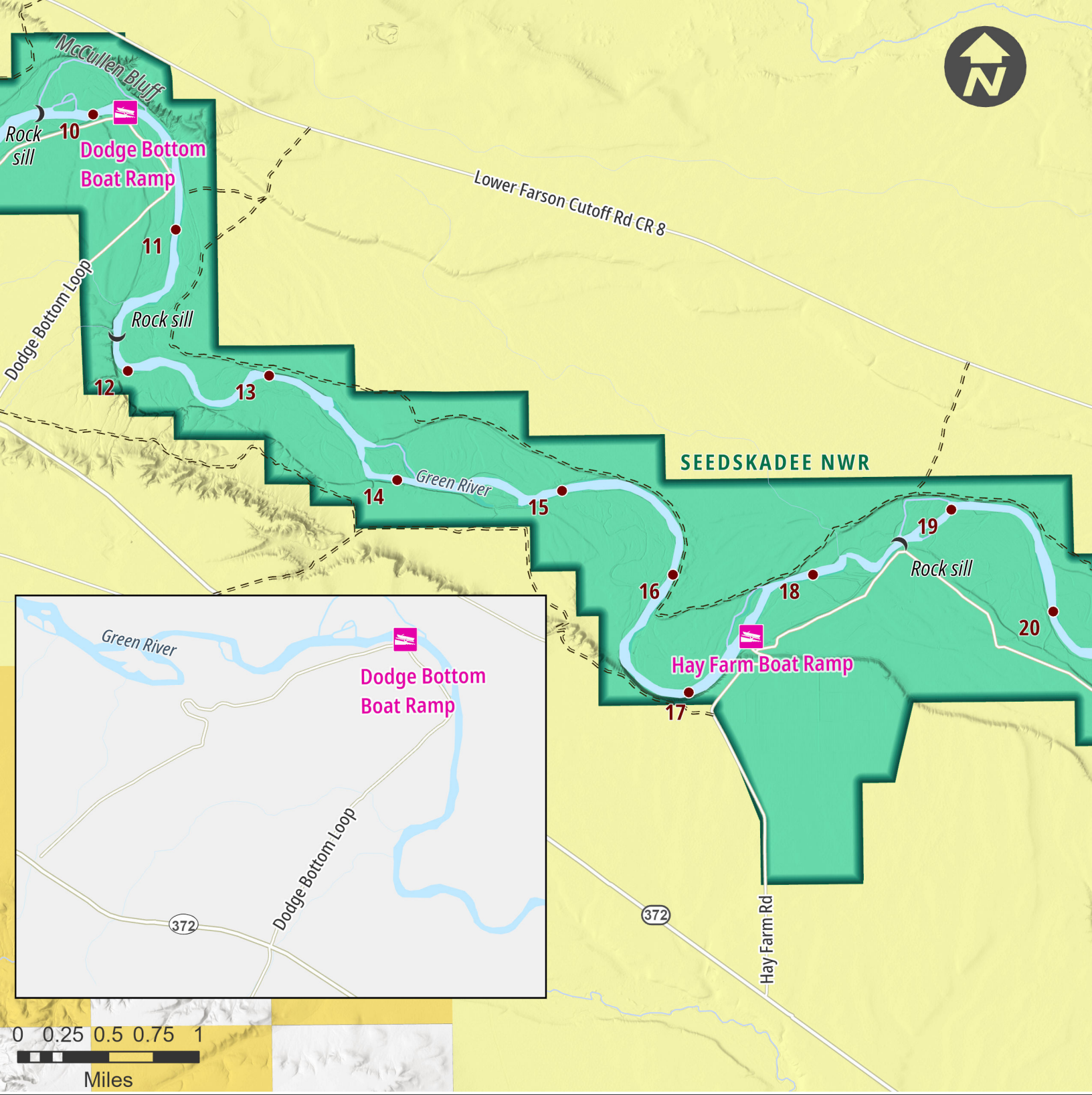


# Map 1

Miles 1 to 11

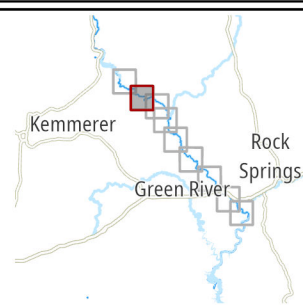






- **River Mile Posts**
- **Boat Ramps**
- ▲ **Campgrounds**
- ☾ **Rock Sills**

- Land Ownership**
- **Bureau of Reclamation**
  - **Fish & Wildlife Service**
  - **Private**

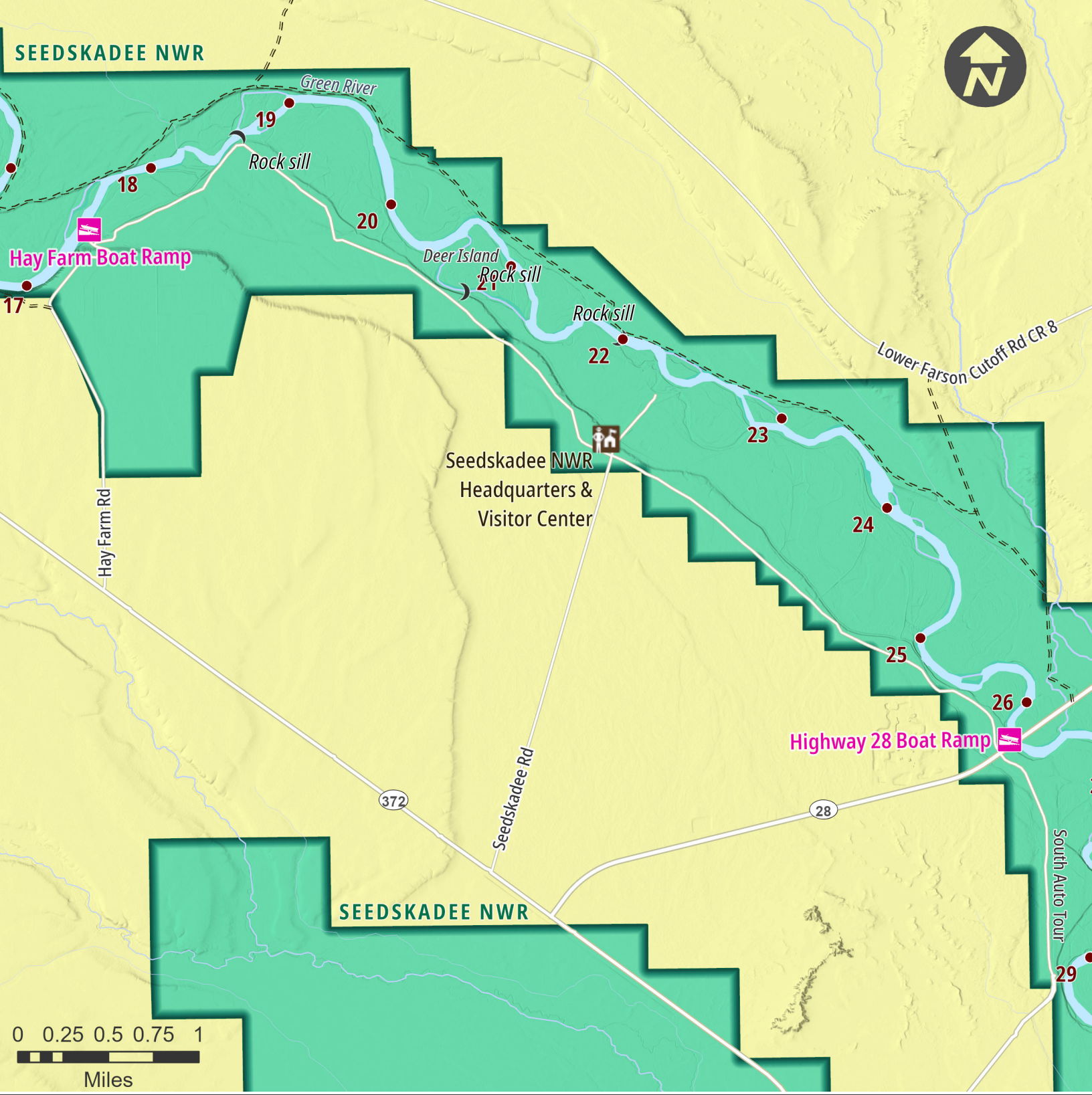


# Map 2

Miles 10 to 20





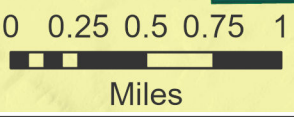


SEEDSKADEE NWR

Hay Farm Boat Ramp

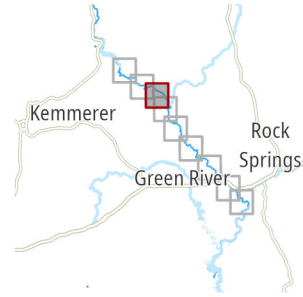
Seedskadee NWR  
Headquarters &  
Visitor Center

Highway 28 Boat Ramp



- River Mile Posts
- 🚤 Boat Ramps
- ⛺ Campgrounds
- 🌙 Rock Sills

- Land Ownership**
- 🟡 Bureau of Reclamation
  - 🟢 Fish & Wildlife Service

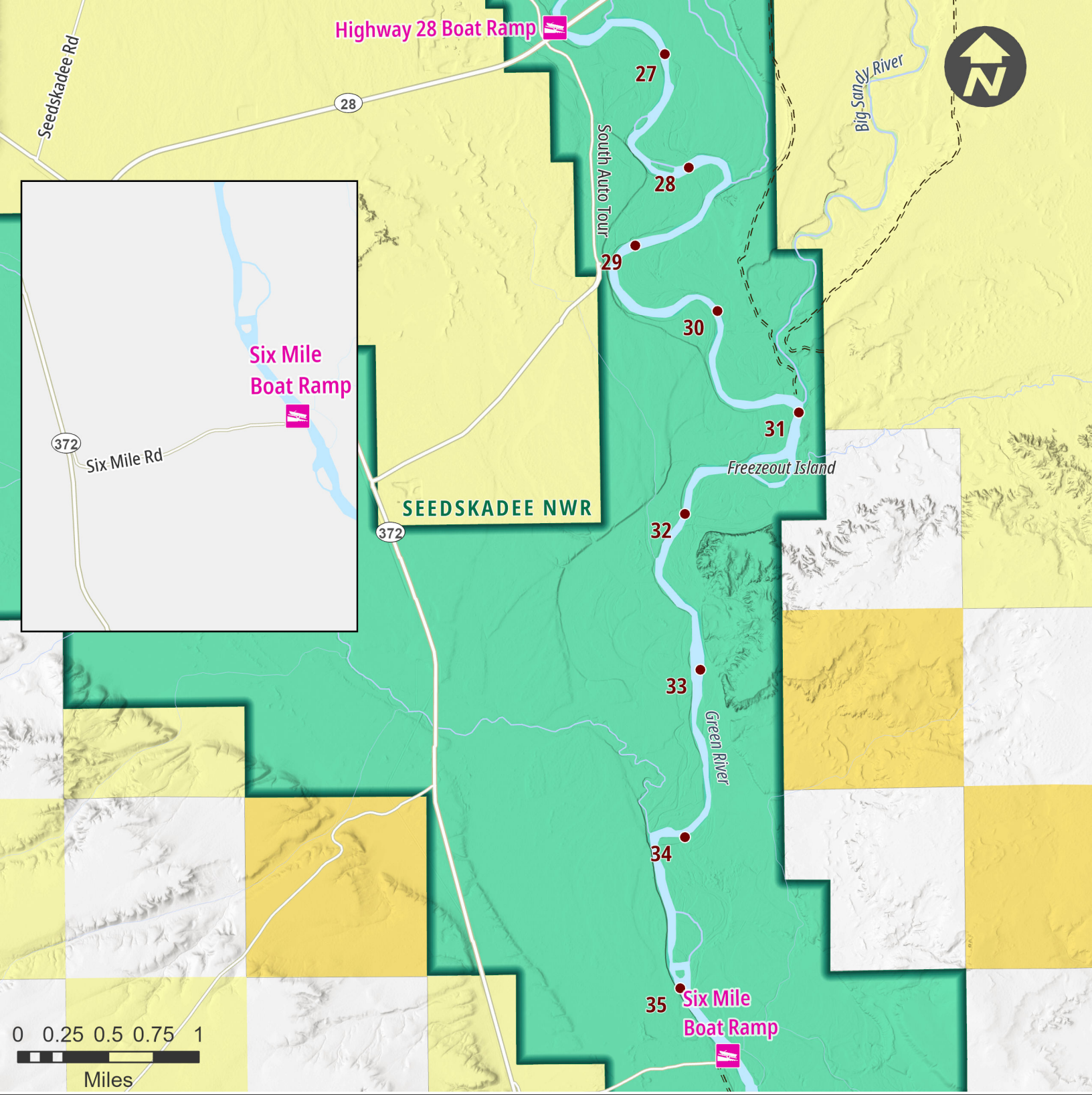


# Map 3

Miles 17 to 29







● River Mile Posts

WR Boat Ramps

▲ Campgrounds

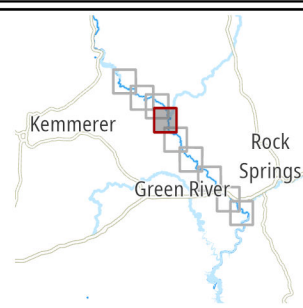
### Land Ownership

■ BLM

■ Bureau of Reclamation

■ Fish & Wildlife Service

□ Private

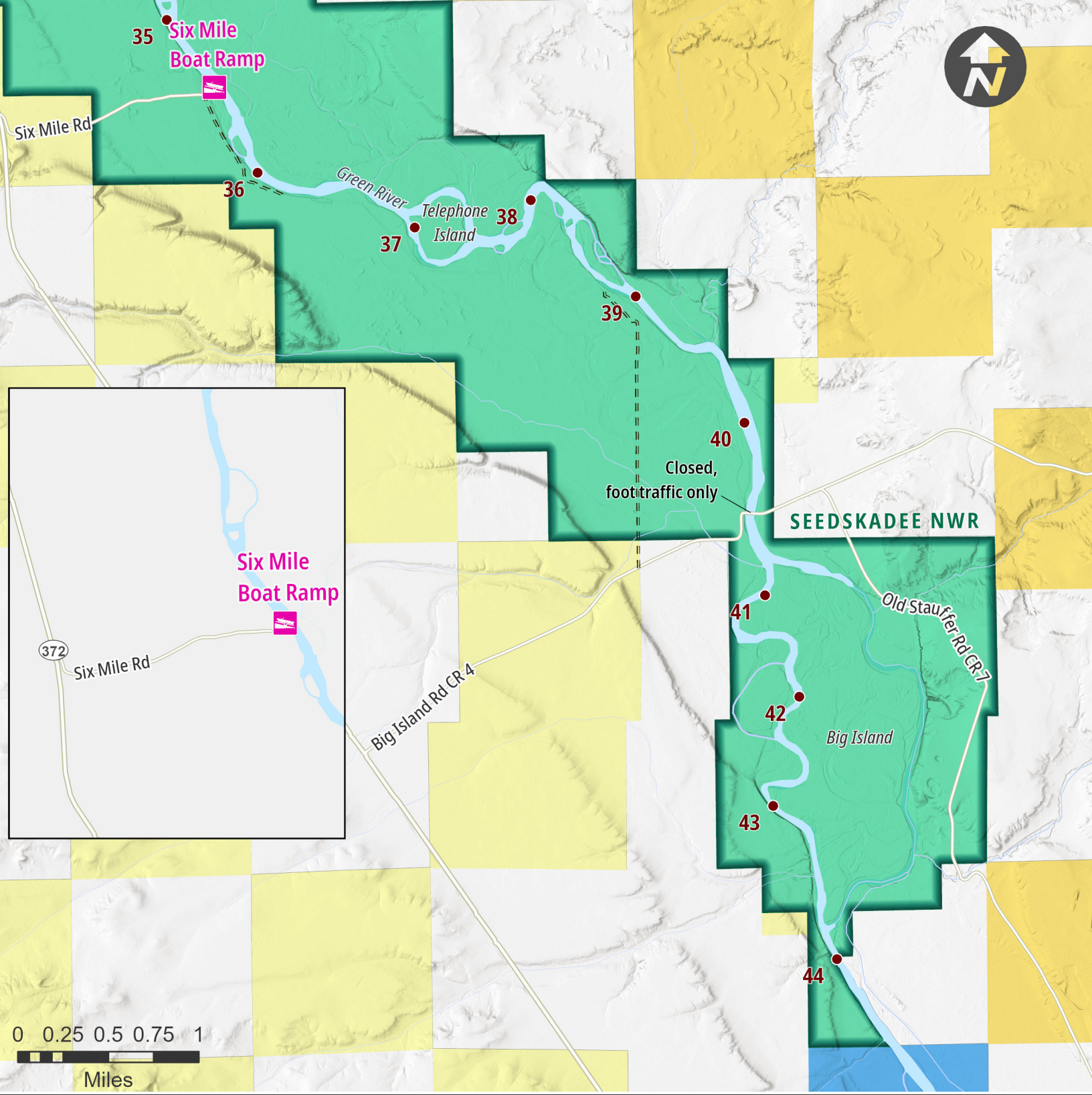


# Map 4

Miles 27 to 35

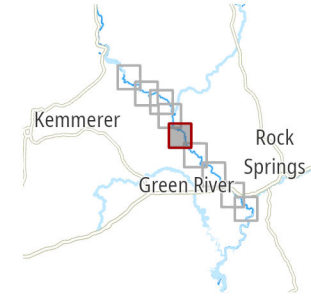






- River Mile Posts
- 🚤 Boat Ramps
- ⬆️ Campgrounds

- ### Land Ownership
- 🟡 BLM
  - 🟨 Bureau of Reclamation
  - 🟢 Fish & Wildlife Service
  - 🟦 State
  - ⬜ Private

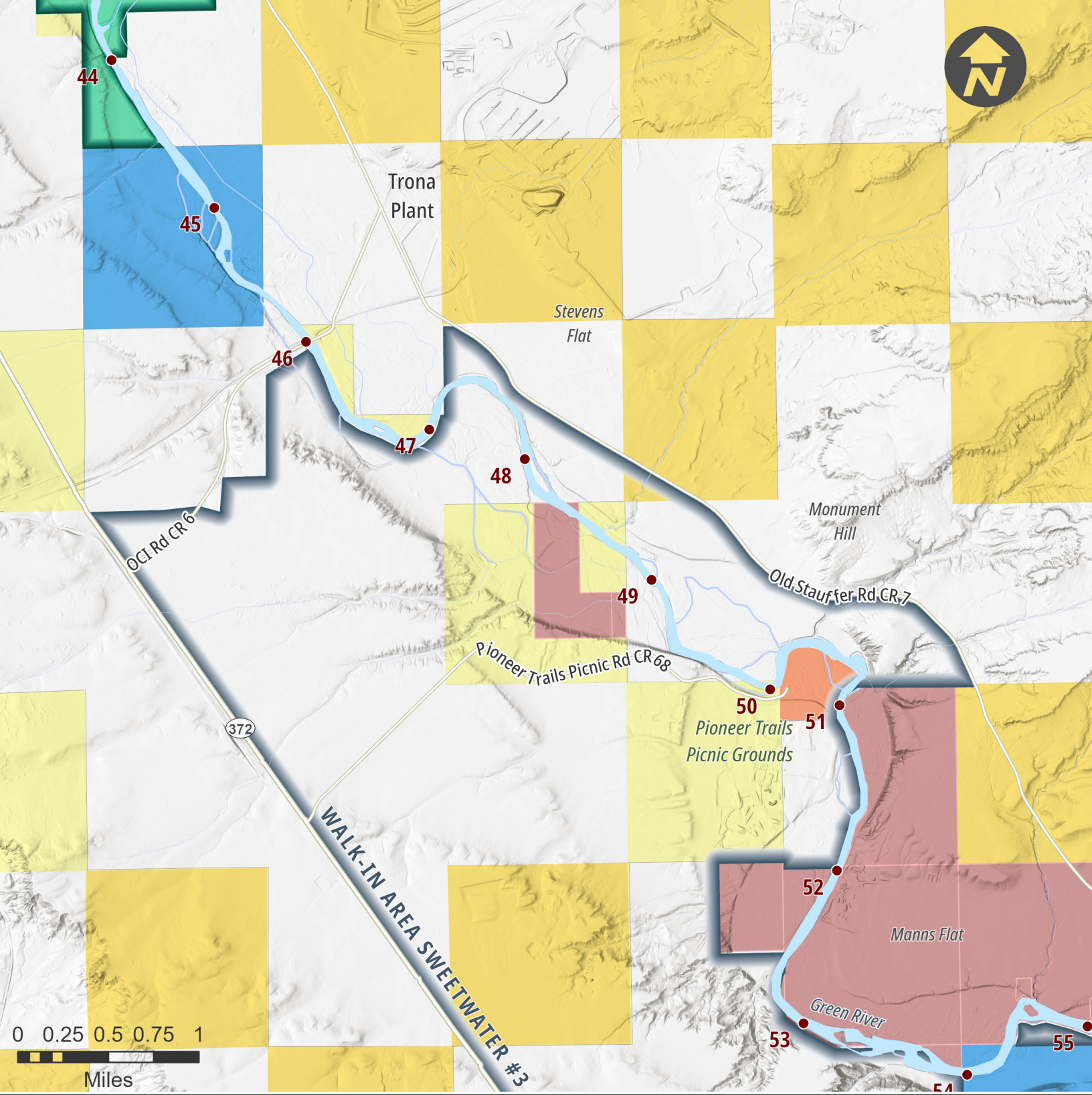


# Map 5

Miles 35 to 44



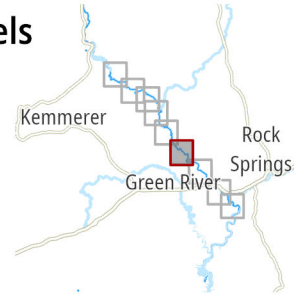




- River Mile Posts
- ▣ Boat Ramps
- ▲ Campgrounds

- Land Ownership**
- BLM
  - Bureau of Reclamation
  - Fish & Wildlife Service
  - State
  - Sweetwater County
  - Private

- Sensitive Private Parcels**
- No Trespassing
  - No Wading
  - No Anchoring

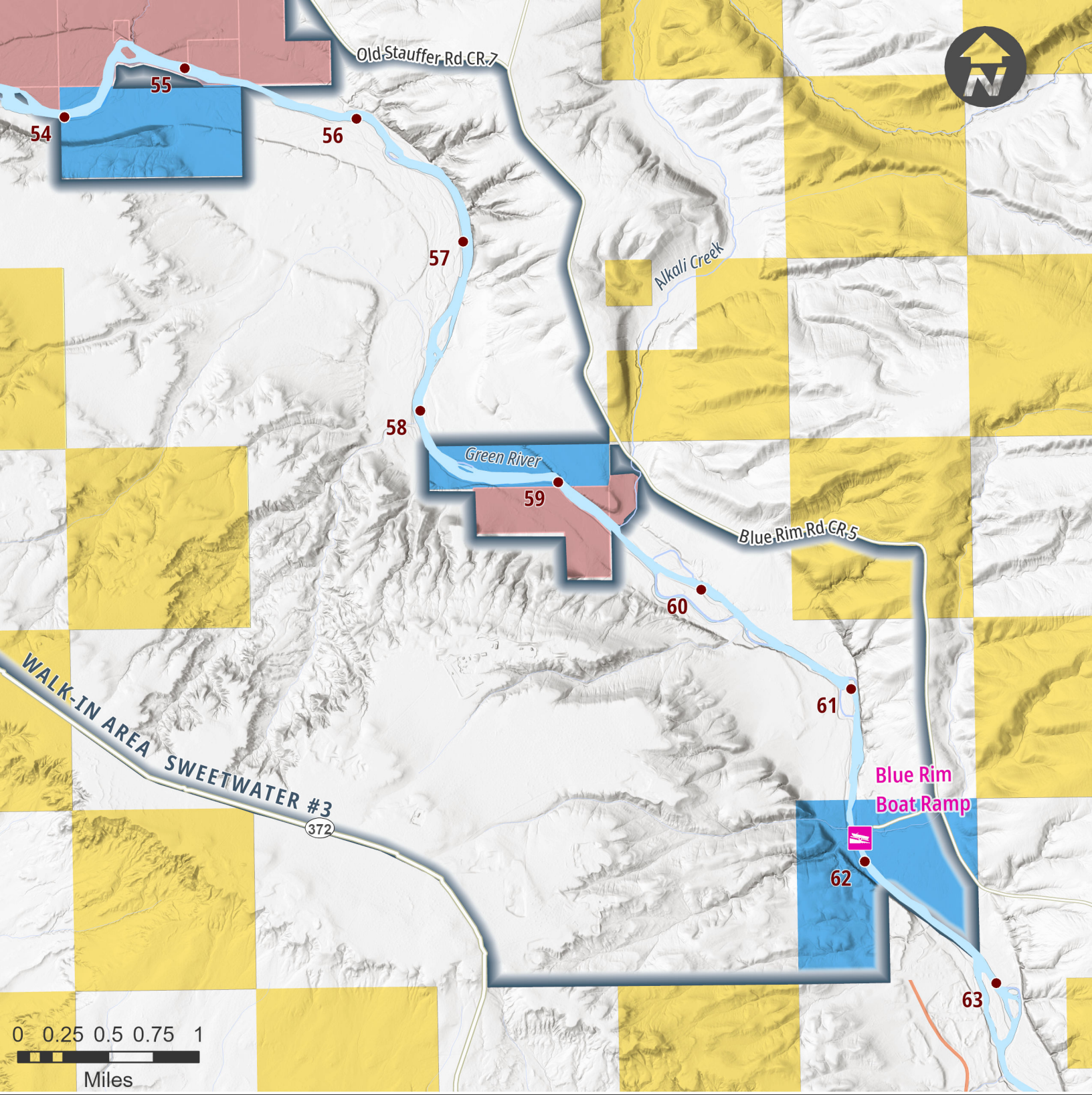


# Map 6

Miles 44 to 55



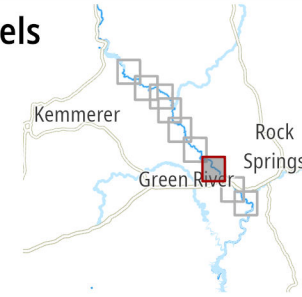




- River Mile Posts
- 🚤 Boat Ramps
- ⛺ Campgrounds

- Land Ownership**
- BLM
  - Bureau of Reclamation
  - State
  - Private

- Sensitive Private Parcels**
- No Trespassing
  - No Wading
  - No Anchoring

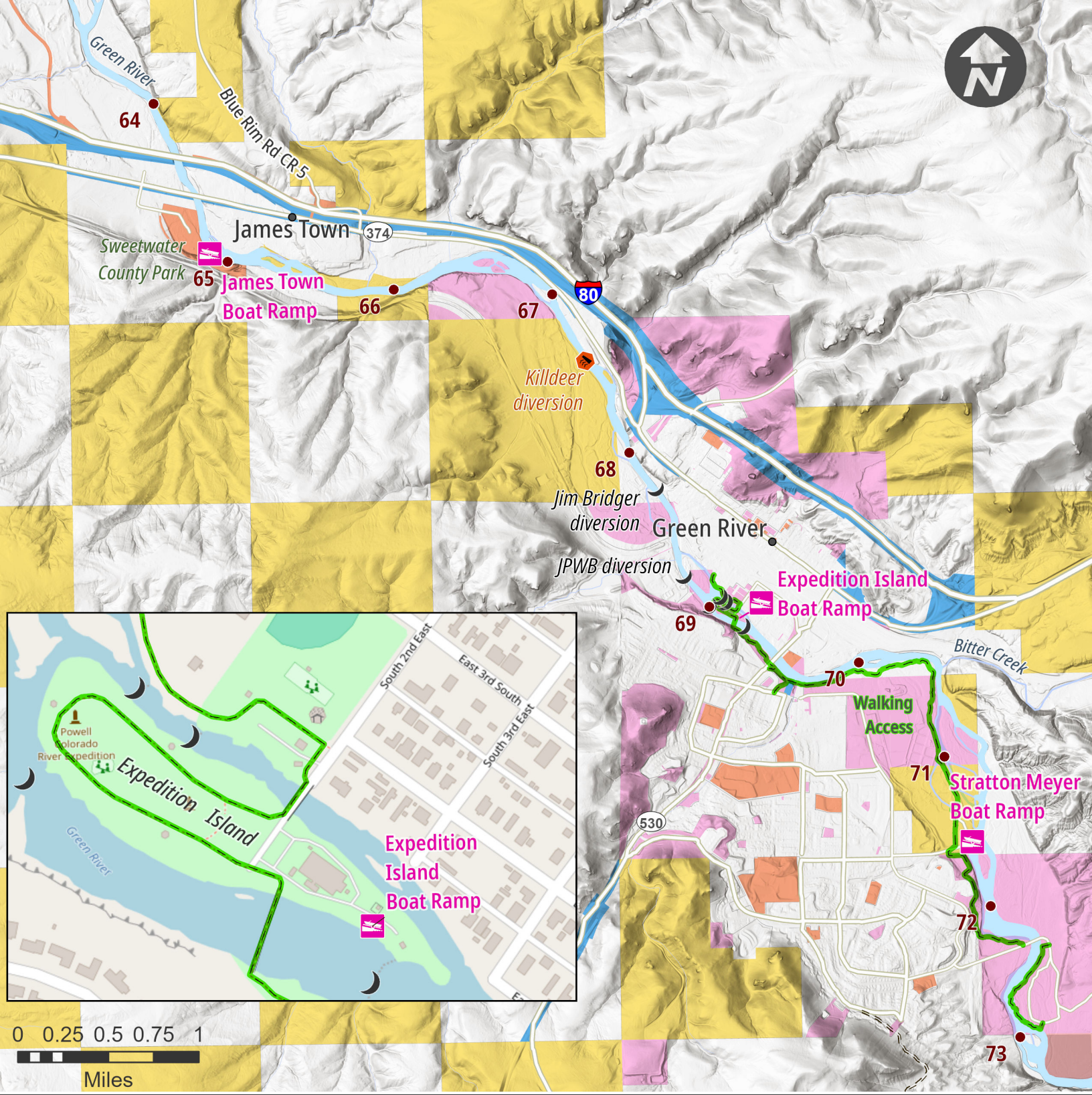


# Map 7

Miles 54 to 63



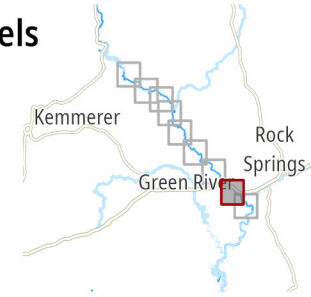




- River Mile Posts
- 🚤 Boat Ramps
- 🏕 Campgrounds
- 🌙 Rock Sills
- ⚠ River Hazards

- ### Land Ownership
- 🟡 BLM
  - 🟦 State
  - 🟠 Sweetwater County
  - 🟪 City of Green River
  - 🟩 Private

- ### Sensitive Private Parcels
- No Trespassing
  - No Wading
  - No Anchoring



# Map 8

Miles 64 to 73



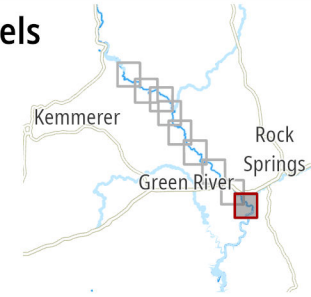




- River Mile Posts
- 🚤 Boat Ramps
- ⛺ Campgrounds
- 🌊 Rock Sills
- ⚠️ River Hazards

- ### Land Ownership
- 🟡 BLM
  - 🟢 Forest Service
  - 🟠 State
  - 🟠 Sweetwater County
  - 🟡 City of Green River
  - ⬜ Private

- 🟠 Sensitive Private Parcels
- No Trespassing
- No Wading
- No Anchoring



# Map 9

Miles 69 to 78

