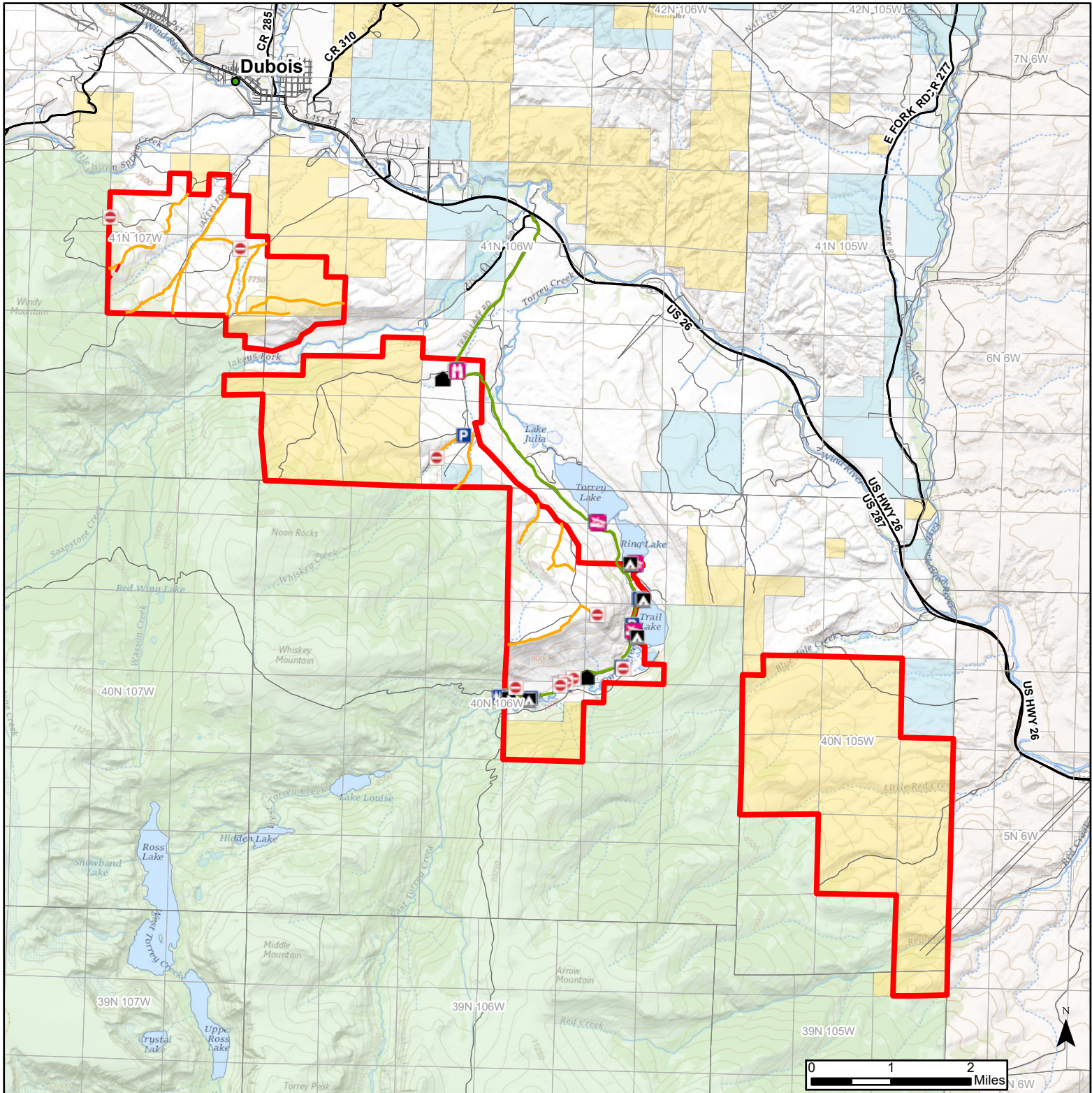




Whiskey Basin Wildlife Habitat Management Area

Open Dates:
THIS AREA OPENS TO
MOTORIZED VEHICLES AT
8:00 AM MAY 16th.



WHMA_ROWS	Boat Ramp	Fish Cleaning Station	Road Closed	Special Conditions Apply	StateBoundary	COUNTY	U	BLM
Parking	Boat Dock	Fishing Pier	Wildlife Viewing Area	Closed Road	PLSS Township	CITY	I	Federal Land
Comfort Station	Campground	Headquarters	Other	Trail	PLSS First Division	S	Forest Service	Private
			Open Road	WHMA_Boundaries	STATE		Bureau of Indian Affairs	State

Recreational opportunities at this WHMA are: Fishing, Hunting, Camping, Hiking, Wildlife Viewing
Amenities: Comfort Stations, Campgrounds, Boat Ramps
Access Restrictions: Dec. 1 - May 15
Other Restrictions: None
Exceptions: Closure is limited to vehicles only. Foot and horse access open year-round

This map is for visual use, assistance and general location only, does not represent a survey, and is not to be used for legal conveyance. Hunt Area boundaries are approximate, consult Game and Fish Hunting Regulations for descriptions and restrictions. Access to these private lands for any commercial activity must be gained by contacting the Wyoming Game and Fish Department directly.